



2019 MICHIGAN FISHING GUIDE

Rules apply from April 1, 2019 - March 31, 2020



This guide is also available online at
Michigan.gov/dnrdigests

License Items & Fees

Purchase your fishing license (and more) online at Michigan.gov/dnr.

Item Type	Fee
DNR Sportcard	\$1.00
All-Species Fishing Licenses	
Resident Annual	\$26.00*
Nonresident Annual	\$76.00*
Senior Annual (Residents 65 or older or Residents who are legally blind – see p. 6)	\$11.00*
24-hour (Resident or Nonresident)	\$10.00
72-hour (Resident or Nonresident)	\$30.00
Combo Hunt/Fish Licenses (Base, Annual Fishing, 2 Deer)	
Hunt/Fish Resident	\$76.00*
Hunt/Fish Senior Resident	\$43.00*
Hunt/Fish Nonresident	\$266.00*
Lost Licenses	
Lost your license? See the green box below for instructions on how to replace.	

Fishing license fees are waived for Michigan residents who are veterans with 100% disability or active-duty military (see p. 6).

All fishing licenses are good for all species allowed for harvest as indicated in this Fishing Guide. **A \$1 surcharge is added to the combination hunt and fish licenses, resident annual, nonresident annual, and resident senior annual all-species fishing licenses, as noted with the asterisk (*).** Revenue generated from these funds will be used to educate the public on the benefits of hunting, fishing and trapping in Michigan, and the impact of these activities on the conservation, preservation and management of the state's natural resources in accordance with statute. Learn more at Michigan.gov/dnr.

Who needs a Michigan fishing license?

A license is required when targeting fish, amphibians, crustaceans and reptiles in public waters of the state. If you fish in Michigan you must purchase a fishing license if you are 17 years of age or older. If you are under 17, you may fish without a license, but you are required to observe all fishing rules and regulations. Turning 17 at any point during the current season (April 1 - March 31)? You'll need to buy a license once you do!

The Michigan Department of Natural Resources has developed an electronic license that allows an individual to display an electronic copy of his or her fishing license using an electronic device.

Where does the fishing license revenue go?

For information concerning where fishing license funds are used please see p. 64.

Any adult actively assisting a minor must have a fishing license. Please note, adults without a license may:

- Help land a fish with a net or their hands
- Help unhook a fish
- Set up the fishing rod with the appropriate gear
- Bait the hook
- Fix tangles or snags
- Cast the line for young anglers; however, it should be stressed that the young angler must be an active participant while the adult is only assisting

If the individual assisting did have a fishing license they would be in compliance and they would be supporting Michigan's aquatic resources for future generations.

Where can you purchase a Michigan fishing license (or replace a lost one)?

Option 1: Online at www.mdnr-elicense.com

Option 2: At a DNR License Agent (find a list online at www.mdnr-elicense.com)

Option 3: At a DNR Customer Service Center (find the closest one to you on p. 65)

Need help? Problems buying your license online?

Call the DNR's eLicense Help Desk: 517-284-6057



Check Here. Park Here.

Still just \$11 when purchased with your license plate registration renewal, the Recreation Passport is your very own key to visit Michigan's 103 state parks, hundreds of miles of trails, historic sites, boat launches and more. Plus, it's the easiest way to support and protect our state parks, trails and waterways for the next generation.

Enjoy convenience and savings. Check **"YES"** when you renew your license plate with the Secretary of State. The price is \$16 when purchased at state parks.

Visit Michigan.gov/recreationpassport to view non-resident fees, information on grants and more.

Please note, a Recreation Passport is required to enter Boating Access Sites in Michigan.

New regulations appear in red text throughout the guide.

NOTE: Always check online for the most recent information: Michigan.gov/fishing or call 888-367-7060 for a pre-recorded message.

Statewide: Yellow Perch

- The statewide daily possession limit for yellow perch has been reduced to 25 (except as noted on pp. 12-13).

Fishing Tournament Registration

- In addition to bass tournaments, walleye tournaments and muskellunge contests are now required to register with the Michigan Fishing Tournament Information System (p.62).

Lake Huron Lake Trout Management Unit MH-1

- The daily possession limit for lake trout and splake combined has been reduced from three to two (p. 21).

Drowned River Mouth / Type F Waters

- Drop-shotting is now allowed on these waters, but is limited to single-pointed hooks measuring 1/2" or less from point to shank (p. 18).

Inland Trout & Salmon

- Several waters have changed classification along with some waters being added or removed. New symbols have been added to represent flies only, artificial lures only and hook restrictions. (Both on pp. 38-59)

Scented Material & Hook Restrictions

- The provision prohibiting the use or possession of scented material has been rescinded, except on flies-only waters (p. 40).
- The single-pointed unweighted hook regulation has been increased from 3/8 to 1/2" (p. 44-59).

Smelt Regulations Gear Change

- The unlimited hook provision has been removed (p. 10).

Michigan's Fight Against Aquatic Invasive Species

The state is taking action to prevent the introduction and spread of aquatic invasive species in Michigan's waters to keep our rivers, lakes and streams world class. Three specific efforts include grants, increasing awareness and reporting.

- Invasive Species Grant Program - \$3.6 million has been dedicated to fund projects that prevent, monitor, respond and eradicate new and current invasive species.
- Attention anglers! You are our first line of defense in the fight against aquatic invasive species! We need your help, go online to Michigan.gov/invasives to learn about what you can do.
- If you see something strange – report it! Take a photo of the species in question and contact the DNR through Michigan.gov/invasives.

Learn more about aquatic invasive species on pp. 60-61.

REPORT ALL POACHING (CALL OR TEXT): 800-292-7800

NOTICE: This brochure is not a legal notice or a complete collection of fishing regulations and laws. It is a condensed guide issued for anglers' convenience. Copies of Michigan's regulations can be obtained from our website, Michigan.gov/dnr.

The State of Michigan allows appropriate advertising in its annual regulations to reduce costs of printing. Many states have adopted a similar strategy. Promotional advertising does not constitute endorsement by the Michigan Department of Natural Resources.



The Michigan Department of Natural Resources is committed to the conservation, protection, management, use and enjoyment of the state's natural and cultural resources for current and future generations.

The Michigan Natural Resources Commission (NRC) is a seven-member public body whose members are appointed by the Governor and subject to the advice and consent of the Senate. The commission conducts monthly, public meetings in locations throughout Michigan. Citizens are encouraged to become actively involved in these public forums. For more information visit Michigan.gov/nrc.

The 2019 cover photo is of Mullett Lake (Cheboygan Co.) and is from Steve Philip.

Have a photo you think would look great on the of next Michigan Fishing Guide's cover?

We're looking for photos that focus on places to fish, not so much people or fish species themselves. Photos should be portrait orientation. If you've got one, email it to DNR-Fisheries@michigan.gov.

New regulations appear in red text throughout the guide.

A complete listing of regulations and legal descriptions are available on our website: Michigan.gov/dnr

The Michigan Department of Natural Resources provides equal opportunities for employment and access to Michigan's natural resources. Both state and federal laws prohibit discrimination on the basis of race, color, national origin, religion, disability, age, sex, height, weight or marital status under the Civil Rights Acts of 1964 as amended (MI PA 453 and MI PA 220, Title V of the Rehabilitation Act of 1973 as amended, and the Americans with Disabilities Act). If you believe that you have been discriminated against in any program, activity, or facility, or if you desire additional information, please write: Human Resources, Michigan Department of Natural Resources, P.O. Box 30028, Lansing, MI 48909-7528 or the Michigan Department of Civil Rights, Cadillac Place, Suite 3-600, 3054 W. Grand Blvd., Detroit, MI 48202 or the Division of Federal Assistance, U.S. Fish and Wildlife Service, 4401 North Fairfax Drive, Mail Stop MBSP-4020, Arlington, VA 22203.

This publication is available in alternative formats upon request.

2019 MICHIGAN FISHING GUIDE

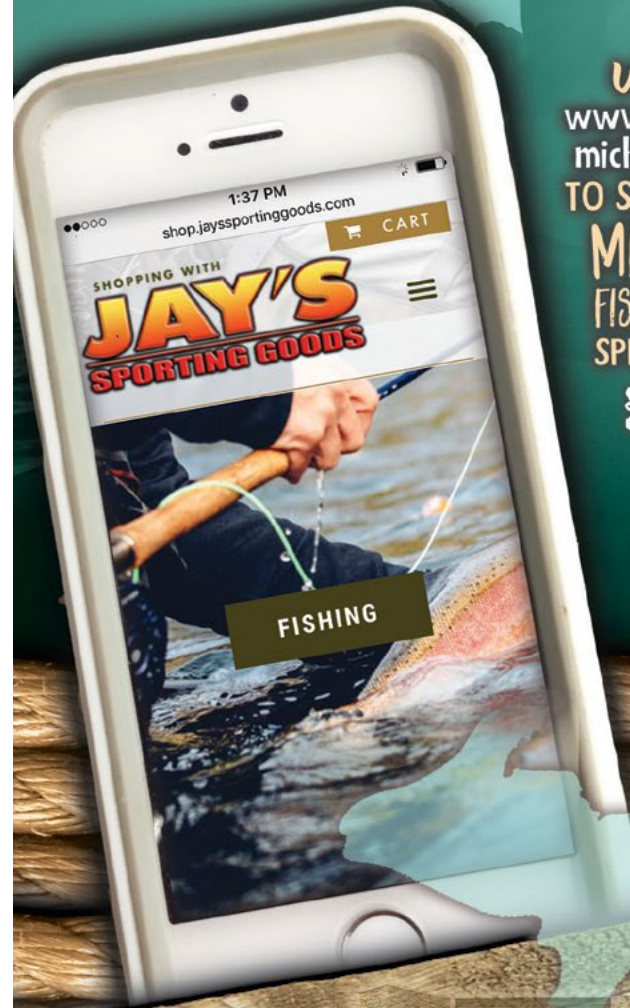
- CONTENTS -

Amphibians & Reptiles.....	22
Angler Harassment Information.....	33
Angler Rights On Public Streams	33
Aquatic Invasive Plants and Animals.....	60-61
Boat Registration Information.....	62
Bow & Spear Fishing Regulations	16-17
Common Fish Species	36-37
Customer Service Centers	65
Definitions & Terms.....	8-9
Description of Inland Waters.....	6
Eat Safe Fish.....	32
Exceptions to General Regulations by County	28-32
Fishing Seasons Chart.....	4
Fishing Tournament Information.....	62
General Fishing Regulations	12-14
General Netting Regulations	23
Great Lakes Commercial Fishing Nets.....	19
Great Lakes Trout and Salmon	18-21
Ice Shanties	62
Inland Trout & Salmon Regulations.....	38-59
County Listing of Lakes and Streams	44-59
Gear Restricted Streams	40-42
Inland Trout & Salmon Lake Regulations.....	38
Inland Trout & Salmon Stream Regulations.....	39
Lake Sturgeon Regulations.....	15
Lawful Fishing Methods.....	10
License Information	
& Requirements	Inside Cover
Major Regulation Changes	2
Marked & Tagged Fish	19
Master Angler & State Record Information	34-35
Michigan-Indiana Bordering Lakes.....	26
Michigan-Wisconsin Boundary Waters.....	24-25
Native American Fishing.....	7
Parasites & Diseases of Fish.....	62-63
Personal Flotation Devices.....	33
Railroad Rights-Of-Way.....	33
Seasonal Fish Mortalities.....	63
Special Northern Pike & Muskellunge Regulations.....	13-14
State Fish Hatcheries.....	59
Sylvania Wilderness Area	26
Unlawful Activities	11
Viral Hemorrhagic Septicemia Virus Statewide Regulations	27

2019 Fishing Seasons

This table provides general hook-and-line fishing seasons/dates for the species listed. There are many other fishing regulations associated with these species and seasons. Please refer to the rest of the 2019 Michigan Fishing Guide for regulations concerning size limits, possession limits, and other restrictions.

Species	Season Dates												More Info.
	April	May	June	July	Aug.	Sep.	Oct	Nov.	Dec.	Jan.	Feb.	March	
Largemouth & Smallmouth Bass													Page 12
Catch-and-immediate-release on all waters													
Possession season on all waters, including Great Lakes					May 25 - December 31								Pages 12-13
Possession season on Lake St. Clair & St. Clair & Detroit Rivers					June 15 - December 31								Page 12
Muskellunge													
Catch-and-immediate-release on all waters													Pages 12-14
All Great Lakes & inland waters & St. Marys River							June 1 - March 15						Pages 12-14
Lake St. Clair & St. Clair & Detroit Rivers							June 1 - December 31						Pages 12-14
Northern Pike & Walleye													
Lower Peninsula Great Lakes, Lake St. Clair & St. Clair & Detroit Rivers													Pages 12-14
Lower Peninsula inland waters													Pages 12-14
Upper Peninsula Great Lakes, inland waters & St. Marys River							May 15 - March 15						Pages 12-14
Salmon & Trout													
Great Lakes, Lake St. Clair, St. Marys River, St. Clair & Detroit Rivers													Pages 18-21
(Inland) Type 3 & 4 streams and Type B, C, E & F lakes													Pages 38-59
(Inland) Type 1 & 2 streams and Type A & D lakes													Pages 38-59
Gear Restricted streams					April 27 - September 30								
Please see pages 40-42 for information concerning seasons on these streams.													
Channel Catfish, Flathead Catfish, Cisco (Lake Herring), Lake Whitefish, Smelt, Sunfishes, White Bass, Yellow Perch & Other Species													
All waters open for fishing													Pages 12-13
Great Lakes Lake Trout & Splake - See map and Table 4 on Pages 20-21													
Lake Sturgeon - See Table 2 on Page 15													



visit us at
www.jayssportinggoods.com/michigan-fishing-guide-deals/
 TO SEE THIS WEEK'S **LATEST**
MICHIGAN
 FISHING GUIDE
 SPECIFIC DEALS
 OR SCAN THE QR CODE



Michigan's Original
OUTDOOR SUPERSTORE

JAY'S
SPORTING GOODS

GAYLORD

1151 S. Otsego Ave
 (989) 705-1339

CLARE

8800 S. Clare Ave
 (989) 386-3475

JAYSSPORTINGGOODS.COM

Fishing License Requirements and Special Provisions:

- You must purchase a license if you are 17 years of age or older.
- **If you are under 17, you may fish without a license, but you are required to observe all fishing rules and regulations.**
- When fishing, you must carry your license and the identification used to purchase that license and exhibit both upon request of a Michigan Conservation Officer, a Tribal Conservation Officer or any law enforcement officer.
- The Michigan Department of Natural Resources has developed an electronic license that allows an individual to display an electronic copy of his or her fishing license using an electronic device.

Your fishing license is valid from March 1 of a given year through March 31 of the following year.

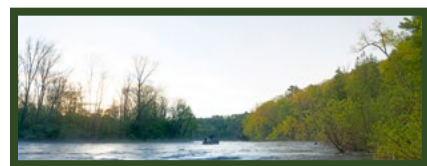
To purchase a fishing license you must have:

- A valid Michigan Driver License; or
- A valid Michigan ID Card (issued by the Secretary of State); or
- A DNR Sportcard (issued by license dealers). If the information on your DNR Sportcard from a previous year is still accurate, you may continue to use it. **NOTE:** when purchasing a DNR Sportcard you will be asked to verify your residency with two pieces of proof of residency).

To qualify for a resident fishing license, you must:

- Be a person who resides in a settled or permanent home or domicile within the boundaries of this state with the intention of remaining in this state, or
- Be a full-time student at a Michigan college or university, and reside in Michigan, or
- Serve full-time in the U.S. Military and be either officially stationed in Michigan or maintain residency in Michigan.

The ownership of land in Michigan by itself is not qualification for a resident license.



Other special provisions:

Residents serving in the Armed Forces: Active-duty military members who enlisted as Michigan residents and have maintained resident status for the purposes of obtaining a driver's license or voting may obtain a resident all-species license at no cost. Applicants must present proof of military status when applying for the free license. Proof of military status may include military ID, leave papers, duty papers, military orders or other evidence verifying that the applicant is a member of the military. This license, available at DNR Customer Service Centers and at license retail outlets statewide, is valid for the license year. Military members receiving a free license must present the license, along with proof of military status, if requested by a conservation officer. **NOTE:** non-resident, active-duty military personnel officially stationed in Michigan qualify for Michigan resident rates.

Veterans with a disability: A resident (with proof of eligibility) who has been determined by the U.S. Department of Veteran Affairs to be permanently and totally disabled as a result of military service and entitled to veteran benefits at the 100% rate, for a disability other than blindness, or a resident rated by the U.S. Department of Veteran Affairs as individually unemployable is eligible to obtain any resident fishing license free of charge.

Residents who are blind: A resident who is declared legally blind is eligible to purchase the senior fishing license.

Persons with developmental disabilities or residents of a home for the aged (licensed under the Public Health Code): A developmentally disabled individual or a resident of a home for the aged licensed under the Public Health Code may obtain a permit from the DNR to fish without a license if the developmentally disabled individual or the resident of the licensed home for the aged is a member of a group accompanied by 1 or more adults who hold a valid license to fish. Permits are available at DNR Customer Service Centers (see p. 65).

Description of Inland Waters

Inland waters are all waters within the jurisdiction of the state except the Great Lakes, and the bays and connecting waters. The connecting waters between Lake Superior and Lake Huron include that portion of the St. Marys River located within this state. The connecting waters of Lake Huron and Lake Erie include the St. Clair River (begins at the Fort Gratiot Light), Lake St. Clair and the Detroit River (beginning at the imaginary line extending due south of the Windmill Point Light, Wayne Co. and ending at the imaginary east-west line drawn through the most southerly point of Celeron Island). Inland waters include all inland lakes, streams and tributaries to the Great Lakes.

Closed Seasons (Spawning Closures)

Michigan prohibits fishing for various species at certain times of the year. These seasonal closures generally coincide with spawning periods and are often referred to as spawning closures. Many anglers and managers tend to think of these regulations as providing specific protection to spawning fish, and the timing and length of closed seasons are generally related to the timing and duration of spawning seasons. These closures are indicated by lake or stream in the county listing (see pp. 28-32 and 44-59). Lakes and streams are closed to all fishing during the period listed.

The most up-to-date Michigan Fishing Guide is *always* available online! Just visit: Michigan.gov/dnrdigests

Native American Fishing on Inland Waters

Federal treaties exist between the United States government and tribes residing in Michigan. Although the entire State of Michigan is covered by treaties, only two treaty areas are currently subject to fishing by tribal governments. The Treaty of Washington, signed in 1836, covers the eastern Upper Peninsula and the northern Lower Peninsula of Michigan. The Treaty of La Pointe, signed in 1842, covers the western Upper Peninsula (except Menominee Co.) and areas of northern Wisconsin.

Seasons and possession limits for tribal members may differ somewhat from state regulations. In addition, under a permit system, tribal members may use spears and may place impoundment nets on designated public waters. The use of gill nets is prohibited in inland waters. If you encounter these activities, do not disrupt the fishers or interfere with their nets. For more information please visit Michigan.gov/fishing and search for tribal coordination unit.

DID YOU KNOW? Violators of Fisheries rules & regulations can face fines, jail time and/or revocation of their fishing license?

Species	Fine	Jail	Revocation of License / Permit
Violation under section 41105 Fish - 1st Offense	Up to \$100 (1st offense) OR	Up to 60 days (1st offense)	Optional
Violation under section 41105 Fish - 2nd or Subsequent Offense	\$50 - \$250; OR	20-90 days	Optional
Violation under section 48702a* Fish - 1st Offense	\$500 - \$1,000 (plus costs of prosecution)	Up to 93 days	Required
Violation under section 48702a* Fish - 2nd or Subsequent Offense	\$1,000 - \$2,500 (2nd offense or subsequent offenses, each ; plus costs of prosecution)	Up to 1 year (2nd offense or subsequent offenses, each)	Required

**NOTE: Violations under section 48702a could lead to a fine, jail or both.*

Artificial Flies: Any commonly accepted single hook wet and dry flies, streamers and nymphs without spinner, spoon, scoop, lip or any other fishing lure or bait attached. The fly or leader may be weighted, but no weight shall be attached to the fly or to the terminal tackle in a manner that allows the weight to be suspended from or below the hook.

Artificial Lure: A manmade lure manufactured to imitate natural bait. Artificial lures include spoons, spinners, flies and plugs made of metal, plastic, wood and other non-edible materials. They also include plastic products made to resemble worms, eggs, fish and other aquatic organisms. **NOTE:** On the following waters from Aug. 1 - Nov. 15, inclusive, terminal fishing gear is restricted to single-pointed hooks **or jigs**, measuring 1/2-inch or less from point to shank or treble hooks 3/8-inch or less from point to shank **ONLY** when attached to a body bait, plug, spinner or spoon. An artificial lure is not a device primarily constructed of lead: all waters of the **Betsie R.** (Benzie and Manistee Cos.), all waters of **Bear Cr.** (Manistee Co.), the **Manistee R.** from Tippy Dam downstream to Railroad Bridge below M-55 (T21N, R16W, S6; Manistee Co.), **Big Sable R.** from mouth upstream to Hamlin Lake Dam (Mason Co.), all waters of the **Pere Marquette R.** (Lake, Mason, Newyago and Oceana Cos.), all waters of the **Little Manistee R.** (Lake, Manistee and Mason Cos.), **White R. from mouth upstream to Hesperia Dam** (Muskegon and Oceana Cos.), all waters of **N. Br. White R.** (Muskegon and Oceana Cos.) **Muskegon R. upstream to Croton Dam** (Muskegon and Newyago Cos.), and all waters of the **N. Br. Pentwater R.** (Mason and Oceana Cos.), **S. Br. Penwater R. upstream to Hart Dam** (Mason and Oceana Cos.).

Cast Net: A net without walls or sides that is thrown to take minnows, alewife, smelt and shad in the Great Lakes and Connecting Waters.

Catch-and-Immediate-Release (CIR): The act of returning fish immediately to the water without injury and without holding in a livewell or similar device. Anglers may continue to fish CIR given that they have reached their daily possession limit for a given species.

Chumming: Luring or attracting or attempting to lure or attract fish by scattering organic material into the water (see p. 11). Material commonly used as chum includes fish eggs, corn, rice, noodles, oatmeal and maggots (see NOTE on p. 39).

Competitive Fishing Event: Means any other organized competition among anglers involving prize distribution or the declaration of a winner that is not defined as a fishing tournament with specific rules applying to that particular event (see p. 62).

Daily Possession Limit: The total number of fish, amphibians or reptiles that may be caught and retained in one day. See also Possession Limit.

Designated Trout Lake: Any lake so designated by the state that contains a significant population of

trout or salmon. All Type A and all Type D lakes are designated trout lakes (see pp. 44-59).

Designated Trout Stream: Any stream so designated by the state that contains a significant population of trout or salmon. All Type 1, all Type 2, all Gear Restricted Streams, all research areas and Brook Trout Research Areas, most Type 3 and most Type 4 waters are designated trout streams (see pp. 44-59).

Detroit River: Beginning at the imaginary line extending due south of the Windmill Point Light, Wayne Co. and ending at the imaginary east-west line drawn through the most southerly point of Celeron Island.

Dip Net: A square net that is constructed from a piece of webbing of heavy twine, hung on heavy cord or frame so as to be without sides or walls, and suspended from the corners and attached in such a manner that when the net is lifted no part is more than 4 feet below the plane formed by the imaginary lines connecting the corners from which the net is suspended. As used in fishing, it shall be lowered and raised vertically as nearly as possible (also referred to as a drop net or umbrella net).

Dropper Line: A line in addition to the main fishing line that contains a hook. Dropper lines are usually attached to the main line.

Drop-shotting: Using a weight suspended below a single-pointed hook that is tied directly to the main fishing line.

Drowned River Mouth Lakes: An area of a river where it enters the Great Lakes. Considered inland waters and are listed in NOTE 2 on p. 18.

Fishing License: A required item for any resident or non-resident angler age 17 or older targeting fish, amphibians, crustaceans or reptiles in Michigan. Annual licenses are valid from March 1 of a given year through March 31 of the following year (see inside cover).

Fishing Season: The period of time a body of water is open to fishing. It is unlawful to fish in any body of water outside of the fishing season.

Fishing Tournament: An organized, competitive fishing event among anglers, or teams of anglers, with specific rules applying to that particular event. See also **Fishing Tournament Information** on p. 62.

Fishing Tournament Information System: An electronic system fishing tournament directors use to register their fishing tournaments (see p. 62).

Great Lakes Connecting Waters: Specific bodies of water in Michigan that connect the Great Lakes. The designated connecting waters are L. St. Clair, St. Marys R., St. Clair R. (begins at the Fort Gratiot Light) and the Detroit R. (begins at the imaginary line extending due south of the Windmill Point Light, Wayne Co., and ending at the imaginary east/west line drawn through the most southerly point of Celeron Isl.).

NOTE: Portage/Torch Lakes (Houghton Co.) are **not** designated as Great Lakes connecting waters.

Hand Net and Landing Net: A mesh bag of webbing or wire, suspended from a circular, oval or rectangular frame attached to a handle. These are the most common fishing nets used in Michigan (see p. 23).

Hook: A single, double or treble pointed hook. All hooks, single, double or treble pointed and attached to a manufactured artificial lure shall be counted as 1 hook.

Inland Waters: All waters in Michigan EXCEPT the Great Lakes and the Great Lakes Connecting Waters.

Minnows: Chubs, shiners, dace, stonerollers, sculpins (muddlers), mudminnows and suckers of a size used for bait in hook-and-line fishing. See p. 12.

Possession Limit: In addition to 1 day's daily possession limit of fish, a person may possess an additional 2 daily possession limits of fish **taken during previous fishing days** provided that the additional limits of fish are processed (canned, cured by smoking or drying, or frozen). This provision does not apply to lake sturgeon or muskellunge. Anglers who have not attained the age of 17 are entitled to the possession limit even though they do not have a fishing license. A person fishing waters bordered by other states or provinces AND possessing multiple fishing licenses may possess the limit allowed for **ONLY ONE** license while in transit, but while fishing in Michigan waters, must comply with Michigan possession and size limits.

Possession Season: That portion of the fishing season during which it is legal to harvest fish.

Protected Slot Limit: Prohibits the possession or harvest of fish that fall within a protected minimum and maximum size interval (see p. 14).

Reporting Requirements for Lake Sturgeon & Muskellunge: Any angler who harvests a lake

Follow us on
Twitter:
@MDNR_Fisheries



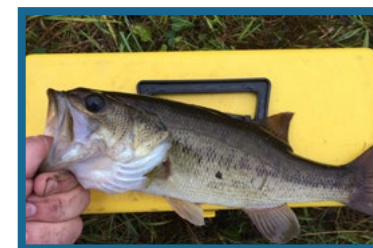
sturgeon or a muskellunge is required to report the harvest within 24 hours of the time of the catch. Anglers can report their harvest online (**Michigan.gov/registerfish**), toll-free by calling 844-345-FISH (3474), or in person at any DNR Customer Service Center (see p. 65) during normal state business hours with advanced notice of arrival.

Snagging: Attempting to take fish in a manner that the fish does not take the hook voluntarily in its mouth. It is unlawful to snag a fish.

Tournament Registration: Following the appropriate process to register bass and walleye tournaments or muskellunge contests with the department (see p. 62).

Trapping: Catching or taking fish by use of a device, such as a cage or net, designed to capture a fish or animal.

Weir: A fence or enclosure set in water to block or retain fish.



June 8 & 9, 2019
Feb 15 & 16, 2020
June 13 & 14, 2020
Feb 13 & 14, 2021



Two weekends a year, families and friends can enjoy one of Michigan's premiere outdoor activities - fishing - for FREE!

All fishing license fees will be waived for two days. Residents and out-of-state visitors may enjoy fishing on both inland and Great Lakes waters for all species of fish. All other fishing regulations will still apply. On these weekends the Recreation Passport fee at all Michigan state parks and recreation areas is waived as well!

Find Free Fishing Weekend events near you at Michigan.gov/freefishing

Bait: Any fish and frogs may be used as bait when legally taken and possessed, EXCEPT lampreys, live carp, goldfish, or live gobies. Wigglers (mayfly nymphs) and other aquatic nymphs and larvae also may be used for bait, but may not be taken from any trout stream except for personal use on the same stream. Crayfish may be taken for bait and personal use (see below). See exceptions on the Michigan-Wisconsin Boundary Waters (see pp. 24-25). To help reduce the spread of invasive species, anglers are reminded to properly dispose of all bait containers including worms and soil, crayfish and minnows in a trash receptacle.

Bow Fishing: Bow and arrow and crossbow may be used on certain waters for certain species. See Table 3 Bow and Spear Fishing Regulations on pp. 16-17.

Crayfish: Native crayfish may be harvested in all waters as long as the water body is open to fishing. In designated trout waters, crayfish may only be taken during the fishing season for trout. Anglers may use traps, nets, hook-and-line or hands to harvest crayfish. All crayfish traps must bear the owners name and address. There is no minimum size limit or possession limit. Crayfish species not native to Michigan waters, including (but not limited to) red swamp crayfish (*Procambarus clarkii*) may not be used for bait, whether alive or dead, on any waters of this state whether those waters are public or private. Rusty crayfish may be harvested for consumptive purposes or bait, as long as they are dead. Crayfish may not be possessed or used for bait, whether alive or dead, on Michigan-Wisconsin boundary waters.

Dip Nets: Dip nets may be used for bowfin, carp, longnose gar, smelt and suckers in non-trout streams. A permit is required if equipment is to be left overnight. See Table 5 General Netting Regulations, p. 23.

Drop-shooting: The practice of having a weight suspended below a single-pointed hook that is tied directly to the main fishing line is lawful on inland lakes, drowned river mouths (see p. 11), Great Lakes and Great Lakes Connecting Waters only. This gear may not be used on rivers or streams.

Gaffs: Gaffs may be used to help land lawfully hooked fish on all waters EXCEPT on a designated trout stream. Gaffs are not recommended for use on fish that are not legal to harvest or fish you plan to release.

Hand Nets: Hand nets may be used to help land lawfully hooked fish and may also be used to take bowfin, carp, longnose gar, smelt and suckers. See Table 5 General Netting Regulations, p. 23.

Hook-and-Line Fishing: Fish taken must be hooked in the mouth. Fish not hooked in the mouth must be returned to the water immediately. No more than 3 lines per person (including tip-ups) nor more than 6 hooks or lures may be used. All hooks attached to an artificial bait or "night crawler harness" are counted as 1 hook (note: for crappie/perch rigs and umbrella

rigs each hook is counted as part of total allowed). Hooks must be baited or attached to an artificial bait. ~~Any number of hooks may be used for 1 line for taking smelt in recognized smelt waters.~~ All tip-ups and other similar devices must be marked with the name and address of the owner in legible English, either directly on the object or securely fastened to it by a plate or tag. All lines must be under immediate control. Hook and size regulations exist on certain streams (see Exceptions to General Regulations by County, pp. 28-32).

Hoop Nets: May be used for burbot only on certain waters Dec. 15 – last day of Feb. A permit is required through a local DNR office. See Table 5 General Netting Regulations p. 23. Hoop nets shall be no larger than 36" in diameter, and no longer than 7' in length.

Minnows for Personal Use: Minnows for personal use may only be taken with hook-and-line, seines, dip nets, hand nets and traps with a valid fishing license and may only be used in the waters where they are collected. In trout streams, minnows may only be taken during the open season for trout by hook-and-line or minnow traps. Minnows may not be taken from LEELANAU: Hatlem's Cr., LIVINGSTON and OAKLAND: Kent L. including the Huron R. upstream to the Hubbell Millpond Dam in Milford, OCEANA: Silver L. and all tributaries. Gear restrictions are as follows: seines must not be over 12 feet by 4 feet; hand nets not over 8 square feet and without sides or walls; and minnow traps not over 24" long and need to have a funnel opening no larger than 1 1/2". Minnow traps must bear the owners name and address. Cast nets may be used to take minnows, alewife, smelt and shad in the Great Lakes, L. St. Clair, and the Detroit R., St. Clair R., and St. Mary's R.

Spearing: Hand, rubber or spring-propelled spears may be used for certain species. See Table 3 Bow and Spear Fishing Regulations pp. 16-17.

Be aware of PFAS

The Michigan Department of Health & Human Services releases Eat Safe Fish Guides annually in the spring, and emergency advisories as needed. Fish across the state are tested for PFAS in addition to other chemicals such as mercury, as all fish have some amount of mercury. As new guidelines are set as a result of elevated levels of PFOS, Michigan is releasing those advisories outside of the annual Eat Safe Fish Guides update. To be sure you have the most up-to-date information about PFAS fish results, visit Michigan.gov/pfasresponse.

It Is Unlawful To:

- **Chum with organic material** in all stream types as indicated on p. 39.
- **Possess or transport** any live transgenic (genetically engineered) organism or any live specimen of the following non-native fish, crayfish, or freshwater mollusk: bighead carp, black carp, silver carp, grass carp (white amur), members of the snakehead family (Channidae), Wels catfish, bitterling, stone moroko, zander, Ide, Japanese weatherfish, rudd, tench, Eurasian ruffe, tubenose goby, round goby, red swamp crayfish, yabby crayfish, rusty crayfish (except as noted on p. 10), killer shrimp, zebra mussel, golden mussel or quagga mussel. To do so may result in civil fines up to \$10,000.
- **Use for bait red swamp crayfish**, whether alive or dead, on any waters of this state (see p. 10).
- **Import, plant or transplant** live fish including viable eggs of any fish without permit.
- **Buy or sell** fish or parts of fish, reptiles, amphibians or crayfish taken under a sport fishing license.
- **Take fish** for the sole purpose of removing the eggs.
- **Harvest, attempt to harvest, or possess any threatened or endangered species** except as authorized by the DNR. For more information, see Michigan.gov/fishing and click on Managing Michigan's Fisheries.
- **Harvest or attempt to harvest freshwater mussels** (clams or bivalves) whether living or dead, including the shell or parts thereof, from any waters of the state.
 - » **Exception:** A special cultural or scientific investigation permit may be obtained from the DNR for the taking of freshwater mussels.
- **Use multi-pointed hooks exceeding 3/8"** between point and shank and/or single-pointed hooks exceeding 1/2" between point and shank on all streams (including tributaries to the Great Lakes) from Aug. 1 - May 31.
- **Use lures exceeding one ounce** on all streams from Aug. 1 to May 31 except when fishing in the Detroit R., St. Clair R., and St. Marys R.
- **Possess or sell** a multi-pointed hook with a weight permanently attached.
- **Possess illegally harvested fish** or mutilated fish that cannot be measured or identified.

- **Possess more than the Michigan daily possession limit** when fishing in Michigan waters even if holding licenses from more than one state or province.
- **Commercially take, possess, or sell** rusty crayfish (*Orconectes rusticus*) in Michigan.
- **Commercially take** amphibians or reptiles in Michigan.
- **Disturb or remove** reptile eggs from the wild without a permit.
- **Fish for** any species or possess fishing devices along a stream or lake closed to fishing.
- **Fish with** your hands, firearms, explosives, setlines, poisons or methods other than lawful fishing methods.
- **Fish anywhere** in a fish ladder or within 100 feet of a lamprey control weir.
- **Use a net** to take a fish within 100 feet of a dam (landing nets are allowed to secure a legally hooked fish).
- **Use a seine** for any species other than minnows.
- **Use cast nets** in any inland water.
- **Shoot** reptiles or amphibians with a firearm (including spring, air or gas propelled), bow and arrow, or crossbow.
- **Have a weight** rigidly attached to a multi-point hook, or suspended from a multi-point hook.
- **Fish on a river or stream** using a weight suspended below any hook, unless the hook is on a dropper line (a leader) that is at least 3" long.
- **Fish on a drowned river mouth** using a weight suspended below any multi-pointed hook or single-pointed hooks exceeding a 1/2" between point and shank.
- **Deposit litter**, fish, offal or any foreign matter in any waters of the state or any lands, private or public.
- **Take or attempt to take fish** outside of the open season for that species.
- **Commercially harvest** wigglers from any state waters from June 1 – Sep. 1.
- **Take, catch or kill or attempt to take, catch or kill a fish** in the waters of this state with a grab hook or snag hook.

Find fishing information and resources at: Michigan.gov/fishing

This table provides general statewide regulations for the species listed. **However, there are many waters in the state that have fishing regulations which differ from those in this table. For instance, it is unlawful to possess fishing gear or fish for suckers on designated trout waters during the closed fishing season.** Please refer to the Michigan-Wisconsin Boundary Waters (see pp. 24-25), Sylvania Wilderness Area (see p. 26), Exceptions to General Regulations by County (see pp. 28-32), and Inland Trout & Salmon Regulations (pp. 38-59) for exceptions. Table notes are found on pp. 13-14. **ATTENTION ANGLERS:** There are new regulations requiring all bass and walleye tournaments and muskellunge contests be registered (see p. 62).

Table 1: General Fishing Regulations

Species (NOTE 1)	Minimum Size (inches)	Daily Possession Limit	Possession Seasons
Largemouth Bass Smallmouth Bass (NOTE 2)	14"	5	3rd. Sat. in June - Dec. 31: L. St. Clair, St. Clair R., Detroit R. (See NOTE 2) Sat. before Memorial Day - Dec. 31: All other waters including Great Lakes (except those listed in NOTE 2)
Walleye (NOTE 3)	15"	5	May 15 – March 15: Upper Peninsula Great Lakes and inland waters, and St. Marys R. Last Sat. in April – March 15: Lower Peninsula inland waters Open All Year: Lower Peninsula Great Lakes, L. St. Clair, St. Clair R. and Detroit R.
Northern Pike (NOTE 7)	24"	2	
Flathead Catfish	15"	5	Open All Year
Channel Catfish	12"	10	
Muskellunge (including Tiger Muskellunge) (See NOTE 7)	42" (See NOTE 7 for exceptions)	Only 1 per angler per license year	1st Sat. in June – March 15: All Great Lakes and inland waters and St. Marys R. 1st Sat. in June – Dec. 31: L. St. Clair, St. Clair R. and Detroit R.
Yellow Perch (NOTE 4)	No size limit	25	Open All Year
Sunfishes (NOTE 5)		25 in any combination of the listed species	
White Bass		25 on Gr. Lakes, L. St. Clair, St. Marys R., St. Clair R., and Detroit R. 10 on inland waters	
Lake Whitefish Cisco (Lake Herring)		12 in any combination	
Lake sturgeon	Please see Table 2, p. 15 for Lake Sturgeon Regulations		
Smelt	No size limit	2 gallons	Open All Year (See p. 23, Table 5 for Netting Regulations)
All others (NOTE 6)	No size limit	No possession limit	Open All Year

NOTES for Table 1

NOTE 1 - All Warmwater Fish:

Warmwater fish include all species listed in this table. Regulations for trout and salmon on inland waters are provided on pp. 38-59.

NOTE 2 - Largemouth & Smallmouth Bass:

Catch-and-Immediate-Release (CIR) seasons: CIR fishing for bass is allowed all year on all waters, unless otherwise closed to fishing. All bass caught must be immediately (see Definitions & Terms pp. 8-9) returned to the water.

On **L. Michigan**, within one-half mile of the following islands of the Beaver Island Archipelago: Beaver, Garden, High and Hog, (**Charlevoix**) the possession season is July 1 - Dec. 31 and open to bass CIR all year.

NOTE 3 - Walleye:

- L. Huron waters of MH-4 (see p. 20) including Saginaw Bay and Saginaw R. upstream to Center St. (Douglas G. Schenk) Bridge:** The daily possession limit for walleye is 8 with a 13" minimum size limit. Any changes will be announced on the DNR website (**Michigan.gov/fishing**) and in a pre-recorded message at 888-367-7060.

- L. Erie:** The daily possession limit will remain at 6 walleye through April 30 of the given year. The daily possession limit for walleye will be set on May 1 each year. The daily possession limit will be announced on the DNR website (**Michigan.gov/fishing**) and in a pre-recorded message at 888-367-7060.

- L. St. Clair and St. Clair R.:** On these waters the daily possession limit for walleye is 6 and the minimum size limit is 13".

- Little Bay de Noc (Delta):** No more than 1 walleye over 23" may be possessed in daily limit north of a line drawn from Peninsula Point Lighthouse to the mouth of the Bark R.

- Michigan waters of Green Bay:** from the mouth of the Menominee R. northward to latitude/longitude (45.5505, -87.2637) located approximately 6 miles north of the Cedar R. from March 2 - Fri. before 1st Sat. in May the daily possession limit is 1 walleye and from the 1st Sat. in May - March 1 the daily possession limit is 5 walleye.

- L. Gogebic (Gogebic and Ontonagon):** Anglers may possess up to 2 walleye between 13" - 15" as part of the daily possession limit of 5 walleye.

- Cheboygan R. from the south end of the outermost breakwall at Mullet L. downstream to Cheboygan Dam, and Black R. from Alverno Dam downstream to its confluence**

with the Cheboygan R.: the possession season for walleye shall be May 15 - March 15, inclusive.

- Ontonagon R. (Ontonagon Co.):** No more than 1 walleye over 23" may be possessed in daily possession limit.

- Portage and Torch L. systems (Houghton Co.):** No more than 1 walleye over 23" may be possessed in daily possession limit.

NOTE 4 - Yellow Perch:

- L. Erie:** The daily possession limit for yellow perch is 50.

- L. Gogebic (Gogebic and Ontonagon):** The daily possession limit for yellow perch is 25 with no more than 5 yellow perch 12" or greater.

NOTE 5 - Sunfishes:

Includes: black and white crappies, bluegill, green and hybrid sunfish, longear, pumpkinseed, redear, rock bass, and warmouth.

NOTE 6 - Other Species:

Those species not listed above and not considered trout or salmon or threatened and endangered species which are protected from harvest.

NOTE 7 - Muskellunge & Northern Pike:

Muskellunge harvest is limited to only 1 muskellunge per angler per year (April 1 - March 31).

Muskellunge Mandatory Reporting Requirement: Anglers who harvest a muskellunge can report it by going online to **Michigan.gov/registerfish** or by calling 844-345-FISH (3474). For more information, see p. 9.

Catch-and-Immediate-Release (CIR) seasons: CIR fishing for muskellunge is allowed all year on all waters, **unless otherwise closed to fishing.** All muskellunge caught must be immediately returned to the water (see Definitions & Terms pp. 8-9) .

Special Muskellunge Regulations:

50" Minimum Size Limit Waters:

Antrim: L. Bellaire (including all tribes upstream to Bellaire Dam), Clam L. (including all tribes), Torch L. (including all tribes); **Antrim & Grand Traverse:** Elk L. (above Elk Rapids Dam, including all tribes); **Antrim, Grand Traverse & Kalkaska:** L. Skegemog (including all tribes); **Barry:** Thornapple L. (from McKeown Rd. to Barger Rd.); **Iron:** Chicago L. (including all tribes).

46" Minimum Size Limit Waters:

Antrim: Beals L. (including all tribes), Benway L. (including all tribes), Ellsworth L. (including all

Table 1 NOTE 7 (continued)

tribes), Hanley L. (including all tribes), Scotts L. (including all tribes), Wilson L. (including all their tribes), Intermediate L. (from Bellaire Dam upstream, including all tribes); **Antrim & Charlevoix:** Saint Clair L. (including all tribes), Sixmile L. (including all tribes); **Barry:** Gun L.; **Cheboygan & Presque Isle:** Black L. (including all tribes); **Cheboygan:** Black R. (including all tribes upstream to Kleber Dam), Mullet L., Indian R., Burt L., Cheboygan R.; **Cheboygan & Emmet:** Crooked R. (downstream from Crooked Lake confluence); **Chippewa:** St. Marys R. (from compensating gates downstream to DeTour/Drummond Island Ferry Docks); **Kent:** Grand R. (downstream from Sixth Street Dam); Murray L.; **Ottawa:** L. Macatawa, Grand R. (downstream from Sixth Street Dam); **Muskegon:** Mona L.

38" Minimum Size Limit Waters:

Luce: Tahquamenon R. and tribes (upstream from Upper Falls); **Van Buren:** Round L.; **Hillsdale:** L. Diane.

Special Muskellunge & Northern Pike Regulations:

Lakes with Muskellunge & Northern Pike possession seasons from the first Sat. in June - Nov. 30: **Barry:** Thornapple L. (from McKeown Rd. to Barger Rd.); **Lenawee:** L. Hudson.

Special Northern Pike Regulations:

Waters with 24" – 34" protected slot limit on Northern Pike and daily possession limit of 2 Northern Pike: **Allegan:** Pine Cr. Flooding **Kalamazoo:** Long L. (T3S, R10W, S17/18/19/30) **Kent:** Bass L. (T10N, R9W, S12/13/14) **Luce:** Blind Sucker Flooding and Bodi L. **Montcalm:** Townline and Sand L.

Waters where up to 5 Northern Pike of any size may be taken with only 1 greater than 24" allowed in the daily possession limit: **Alcona:** Badger L. **Alger:** Echo, Nawakwa, Trout and 16 Mile Lks and Au Train basin. **Antrim:** Beals, Benway, Ellsworth, Hanley, Scotts, Six Mile, St. Clair, and Wilson Lks. **Baraga:** Vermilliac (Worm) L. **Benzie:** Long L. **Charlevoix:** Deer, Fox, Geneserath, Six Mile, and St. Clair and Susan Lks. **Cheboygan:** Black R. (upstream of Tower Dam includes Tower Pond and tributaries), Paradise (Carp), Silver and Wildwood Lks. **Chippewa:** Frenchman and Trout (Carp) Lks. **Clare:** Eight Point L. and L. Thirteen **Crawford:** Big Creek Imp., River and Pickerel Lks. **Delta:** Carr, Chicago, Hamilton, Lyman and Round (T40N, R20W, S1) Lks. and Escanaba R. (upstream from first dam at US-2) **Dickinson:** Sawyer L. **Emmet:** French Farm and O'Neal L. Floodings, and Paradise (Carp) L. **Gladwin:** L. Lancer. **Gogebic:** African (Big and Little), Chaney, Cisco, Clearwater,

East Bay, Fishhawk, Indian, Lindsley, Morley, Poor, Record, and Thousand Island Lks. **Grand Traverse:** Boardman L. and L. Dubonnet. **Houghton:** Rice L. **Iron:** Bone, Brule, Buck, Indian, **Iron,** L. Mary, **Railroad,** Runkle, Sunset and Winslow Lks., Paint R. Pond (downstream of Horserace Rapids and upstream of Frog Island), Hemlock Falls and Michigamme Reservoir, Michigamme Falls and Peavy Reservoir, L. St. Kathryn, Deer R., Net R., and Net R. Wide Waters. **Kent:** Scram L. **Keweenaw:** Schlatter L. **Leelanau:** Florence L. (S. Manitou Is.). **Luce:** East and Muskallonge Lks. **Mackinac:** East, Millecoquins and South Manistique Lks. **Manistee:** Bar and Chief Lks. **Marquette:** Bass (East), Cedar, Engman, Shag (Big) and Witch Lks., Dead R. Storage Basin, Middle Br. Escanaba R., Big West Br. Escanaba R. mainstream downstream to Boney Falls Basin (except Greenwood, Schweitzer and Cataract Reservoirs) **Mason:** Hackert (Crystal) L. **Mecosta:** Canadian Lks. (in T14N, R8W, S20,29,30; north of Pierce Rd. and south of Buchanan Rd. in S19), Haymarsh and Horsehead Lks. **Menominee:** **Shakey Lakes Chain** (Baker, Beecher, East, Long, Resort and Spring Lks.), Westman Imp. **Missaukee:** Missaukee L. **Montcalm:** Crystal L. **Montmorency:** Robarge L., East and West Town Corner and Pug Lks., Black R. and tributaries. **Muskegon:** Big Blue L. **Newaygo:** Diamond, Emerald, Kimball, Nichols, Pickerel, Ryerson (Long) and Sylvan Lks. **Oceana:** Round (Wykoff) and Silver Lks. **Ogemaw:** East Twin Lake, L. Ogemaw. **Osceola:** L. Miramichi, Diamond, Rose and Wells Lks. **Oscoda:** Pickerel L. **Otsego:** Black R. and tributaries. **Presque Isle:** Francis and Orchard Lks., Ocqueoc R. and tributaries, Ocqueoc Watershed Lakes (Ann, Bullhead, Ella, Emma, Ferdelman, Gorman, Horseshoe, Lost, Louise, Lower and Upper Barnhart, May, McIntosh, Moore, Mud and Nettie, and Ocqueoc Lks.), Black R. and tributaries and Tomahawk Flooding. **Roscommon:** L. St. Helen, Cut R. (from the river mouth at Houghton L. upstream to CO 100 just downstream of Higgins L.), Houghton L., Backus Cr. from the stream mouth upstream, including all tributaries, Little Mud L. Flooding, Backus Cr. Flooding, and Backus L. Flooding. **Schoolcraft:** Boot, Crooked, Kennedy, Stanley and Thunder Lks.; **Seney National Wildlife Refuge Pools:** contact Refuge office (906-586-9851).

Waters where up to 5 Northern Pike 24" or greater allowed in the daily possession limit: Lake St. Clair, St. Clair R., and Detroit R.

Waters without possession limits or size limits on Northern Pike: Branch: Lake Lavine.

**Fishing for Lake Sturgeon in Michigan**

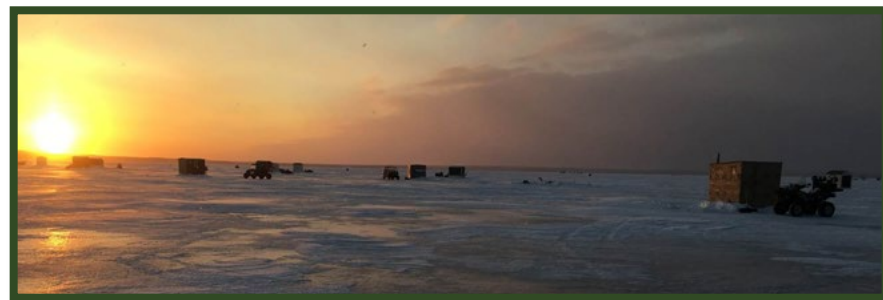
Lake sturgeon harvest is limited to only 1 lake sturgeon per angler per year (April 1 - March 31). Harvest of lake sturgeon is limited to the waters of the state listed in the table below. Spearing for lake sturgeon is prohibited, except in Black Lake (**Cheboygan & Presque Isle Cos.**), during a special winter season; pre-registration is required. For more information, visit Michigan.gov/sturgeon.

Mandatory Reporting Information for Harvesting a Lake Sturgeon

The lake sturgeon fishing and harvest tag is no longer required or available. An angler who harvests a lake sturgeon is required to report the harvest within 24 hours. Anglers can report their harvest online (Michigan.gov/registerfish), toll-free by calling 844-345-FISH (3474), or in person at any DNR Customer Service Center (p. 65) during normal state business hours with advanced notice of arrival. EXCEPTION: Lake sturgeon harvested from Black Lake (**Cheboygan & Presque Isle Cos.**) must be immediately registered on-site with DNR personnel.

Table 2: Lake Sturgeon
Hook & Line Fishing Only (except as indicated above)

Waters	Seasons	Regulations and Size Restrictions
Detroit R.	Fishing Season: July 16 - March 15	All lake sturgeon must be released immediately.
Lake St. Clair and St. Clair R.	Fishing Season: July 16 - March 15 Possession Season: July 16 - Sep. 30	Between 42" - 50", inclusive. Lake sturgeon less than 42" and greater than 50" must be released immediately.
Otsego Lake (Otsego Co.)	Fishing and Possession Season: July 16 - March 15	50" minimum size limit. Lake sturgeon less than 50" must be released immediately.
All MI-WI Boundary Waters (see pp. 24-25 for more details)	Fishing and Possession Season: 1st Sat. in Sep. - Sep. 30	60" minimum size limit. Lake sturgeon less than 60" must be released immediately.
Black Lake (Cheboygan & Presque Isle Cos.)	Fishing and Possession Season: 1st Sat. in Feb. through the following Wed. or until the quota is reached (whichever comes first)	No size limit. All harvested lake sturgeon must be reported immediately to DNR on site. Contact DNR Gaylord office (989) 732-3541 for details.
All Other Waters	NO FISHING SEASON	It is unlawful to fish for lake sturgeon, except in the waters listed above.



BOW & SPEAR FISHING REGULATIONS

The seasons, gear, waters and species where a spear or bow and arrow or crossbow may be used as specified in the table below and lists that follow (except as otherwise prohibited). **Spearing gear shall be limited to:** hand-propelled spear, rubber-propelled spear, spring-propelled spear, bow and arrow, or crossbow. Artificial lights may be used. It shall be unlawful to use a rubber-propelled spear or a spring-propelled spear without being submerged and have the spear under control by means of an attached line not exceeding twenty feet in length. It is unlawful to spear any fish in a waterbody closed to fishing, except as noted in the spearing exceptions list. Unless noted otherwise, all general regulations apply for the species listed (see pp. 12-14). **Anglers should contact local enforcement offices for information concerning local weapons ordinances banning the use of bow and arrow or crossbow in some locations. Maps have been developed to assist anglers in identifying designated trout waters and the regulations associated with each Type as indicated by color scheme and text.** Maps are only available online at Michigan.gov/fishingguide.

Table 3: Bow & Spear Fishing Regulations

Season	Gear	Waters	Species
Open All Year	spear or bow and arrow or crossbow (as listed above)	ALL WATERS except: Designated Trout* Lakes and Streams and Michigan-Wisconsin boundary waters. Also see Spearing Exceptions List below.	bowfin, bullheads, burbot, carp, catfish, cisco (lake herring), drum, gizzard shad, goldfish, grass carp, longnose gar, smelt, **suckers, whitefish
Dec. 1 - March 15 (through the ice)	hand-propelled spear (only)	ALL WATERS except: Designated Trout* Lakes and Streams and Michigan-Wisconsin boundary waters. Also see Spearing Exceptions List below.	northern pike and muskellunge (see NOTE 7 on p. 13)

*All Type A and D lakes are Designated Trout Waters. All Type 1 and 2 streams, Gear Restricted Streams, Research Areas, Brook Trout Restoration Areas, 10 Brook Trout Possession Limit waters, and nearly all Type 3 and 4 streams are Designated Trout Waters (see pp. 38-59).

**The term suckers refers to: suckers (longnose, white, northern hog, spotted), redhorse (silver, golden, black, greater, shorthead), buffalo (bigmouth, black), lake chubsucker, and quillback carpsucker.

Spearing Exceptions List

Waters Closed to Northern Pike and Muskellunge Spearing

It shall be unlawful to fish by any means other than hook-and-line for northern pike or muskellunge in the following waters:

- Alger:** Kingston L.; **Alpena/Montmorency:** Fletcher Floodwaters; **Barry:** Lower Crooked L., Thornapple L. (from McKeown Rd. to Barger Rd.); **Clare:** Budd L.; **Clinton:** L. Ovid; **Delta:** Dana L.; **Dickinson:** East, Island, South, and West Lks (all within Groveland Mines); **Iron:** Brule and Chicagon Lks., L. Emily, Paint L., Paint (Brule Isle Imp.) Pond, Stanley and Swan Lks.; **Kent:** Campau and Murray Lks.; **Keweenaw:** L. Gratiot; **Lenawee:** L. Hudson; **Luce:** Round (North Manistique) L.; **Schoolcraft:** Grassy and McKeever Lks.; **St. Joseph:** Long L.

(Fabius Twp. T6S, R12W, S7); **Van Buren:** Bankson and Round Lks. (Keeler Twp. T4S, R16W, S31)

Waters Closed To Muskellunge Spearing

It shall be unlawful to fish by any other means other than hook-and-line for muskellunge in the following waters: L. Erie, L. St. Clair, Detroit R., and St. Clair R.

Waters with Spearing and Gaff Hook Restrictions

It shall be unlawful to take or attempt to take any species of fish with spearing gear or gaff hook from April 1 – June 15 from the following waters of **Cheboygan Co.:** Black R., Cheboygan R., and Indian R.

L. St. Clair Yellow Perch Spearing

Macomb, St. Clair & Wayne: A hand-propelled spear or bow and arrow or crossbow may be used to harvest yellow perch from Dec. 1 - March 15.

Designated Trout Streams Open To Spring Spearing

The following designated trout streams listed by county are open to the use of spearing gear from April 1 - May 31, for taking bowfin, bullheads, burbot, carp, catfish, cisco (lake herring), drum, longnose gar, gizzard shad, goldfish, grass carp, smelt, **suckers (as listed on p. 16) and lake whitefish:

- Alcona:** Bryant Cr. from Vaughn L. downstream to Little L.; Buff Cr.; Sucker Cr. from confluence of Vincent Cr. (T27N, R8E, S9) downstream to Hubbard L. (T28N, R7E, S36); **Calhoun:** Nottawa Cr. from Calhoun Co. line (T4S, R8W, S31) upstream

to T3S, R5W, S35; Rice Cr. South Branch Rice Cr. from confluence of Rice Cr. and Kalamazoo R. (T2S, R6W, S25) upstream to Concord Rd. (Jackson Co.); **Chippewa:** Trout Cr. downstream of Big Trout L. (T42N, R3E, S31); Prentiss Cr. (T42N, R2E); **Delta:** Squaw Cr. downstream of Co. Rd 513; **Mackinac:** Doe Cr. (T43N, R10W); Foley Cr. downstream of I-75; Hoban Cr. downstream of US-2; Hudson Cr. (T41N, R11W, S8); Martineau Cr. downstream of I-75; McClouds Cr.; Milakokia R. from Milakokia L. downstream to Heinz L.; Norton Cr. from M-135 downstream to South Manistique L.; Nunn's Cr. downstream of Highway M -134; Pearson's Cr. T42N, R1W and R1E; Rabbits Back Cr. downstream of Mackinac Trail; Scrams Cr. (T42N, R11W, S11); Taylor Cr. (T43N, R12W, S2, 11, 12 and 13); **Mason:** Sable R. from Freesoil Rd. downstream to Custer Rd. (T20N, R16W, S22); **Van Buren:** Dowagiac R. and tributaries upstream of 50th Street (T4S, R15W, S35); Lake of the Wood Outlet to confluence with Dowagiac R. (T45N, R15W, S34).

New to the sport? Find information & resources at: Michigan.gov/howtofish



The regulations in this table apply to fishing on the Great Lakes for the following species: Atlantic salmon, brook trout (NOTE 1), brown trout, Chinook salmon, coho salmon, lake trout (NOTE 3), pink salmon, rainbow trout (steelhead) and splake (NOTE 3). For regulations that pertain to fishing for trout and salmon on inland waters, see pp. 38-59.

Great Lakes Trout & Salmon Regulations

Seasons by Water Type	Minimum Size	Daily Possession Limit (NOTES 1, 2, 3)
Open All Year: (NOTE 3) L. Superior, L. Michigan, L. Erie, L. Huron, L. St. Clair, St. Marys R., St. Clair R. and Detroit R.	10" (NOTES 1, 3) (also see Table 4 and p. 21)	Great Lakes, L. St. Clair, St. Marys R., St. Clair R., and Detroit R.: 5 total in any combination; no more than 3 of any one species, except up to 5 coho, Chinook or pink salmon allowed. On the St. Marys R.: 5 additional pink salmon allowed from last Sat. in April - Sep. 30.

NOTE 1

Brook Trout: For L. Superior, the minimum size limit for brook trout is 20" and possession limit is 1 fish. Within 4.5 miles of Isle Royale (Isle Royale National Park waters), catch-and-immediate-release; no possession.

NOTE 2

Drowned River Mouth Lakes: On the following inland waters trout and salmon regulations are as follows: 5 total trout and salmon in any combination; no more than 3 of any one species, except up to 5 coho or Chinook salmon; minimum size limit is 10"; fishing season and possession season are open all year. For all other species of trout and salmon, the possession season is open all year.
Allegan: Kalamazoo and Silver Lks. **Benzie:** Betsie L. **Manistee:** Arcadia, Manistee, and Portage Lks. **Mason:** Pere Marquette L. **Muskegon:** Duck, Mona, Muskegon, and White Lks. **Oceana:** Pentwater, Silver, and Stony Lks. **Ottawa:** Macatawa and Pigeon Lks.

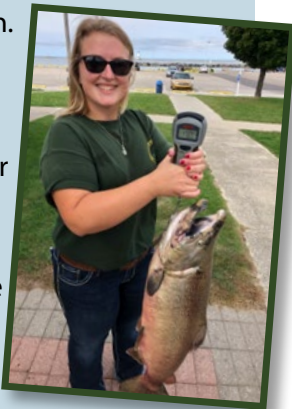
NOTE 3

Lake Trout and Splake Regulations: Lake Trout and splake regulations for the Great Lakes are listed by Lake Trout Management Unit (see Table 4, p. 21). To help identify Management Unit boundaries, a few major ports are listed for each. The map on p. 20 provides a graphic to further define the boundaries. For a complete description of lake trout Management Unit boundaries, contact any DNR Customer Service Center (see p. 65) or check online at Michigan.gov/dnr.

Michigan's Creel Survey Program

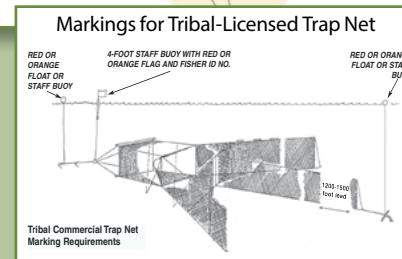
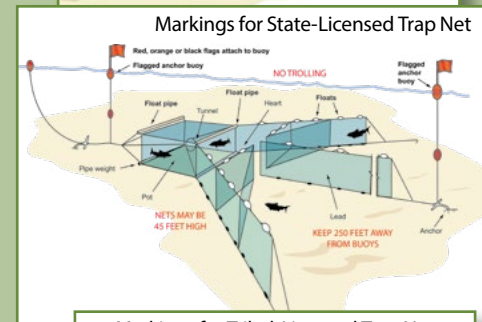
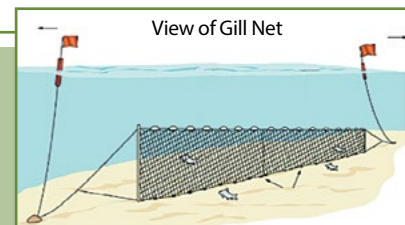
A "creel" is a basket used to collect fish. The Michigan creel survey program is used to collect fish data! When returning from your fishing trip you may find a creel clerk waiting to interview you and take samples from your fish.

Creel clerks collect information about the length of your fishing trip and what fish you caught and released. Biologists use these data to study fish populations, evaluate stocking, and measure the impact of fishing regulations. Creel clerks also want to listen to your concerns and answer questions. The next time you see a friendly face in a DNR shirt approaching you with a clipboard, introduce yourself! We appreciate your participation in the survey and thank you for your time.



Great Lakes Commercial Fishing Nets

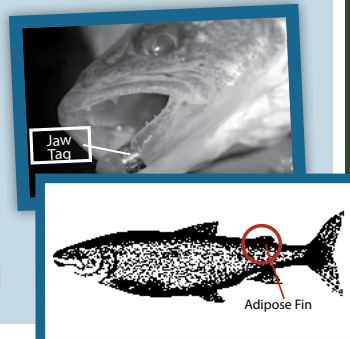
Anglers and boaters on the Great Lakes may encounter commercial fishing gear such as trap nets and gill nets in Michigan waters. All state-licensed or Native American commercial fishing gear are required to be marked with floats or staff/flag buoy combinations depending on the gear type fished and the licensing entity. Anglers and boaters should give wide berth to any markers they see on the water, since the net and anchor lines may extend several hundred feet in any direction from the floats or flags. The diagrams to the right will give sport anglers and boaters an idea about some of the markings they might encounter and assist them in avoiding entanglement of fishing gear or boat propellers. Tampering with commercial fishing gear is illegal and can create safety problems for other boaters on the water.

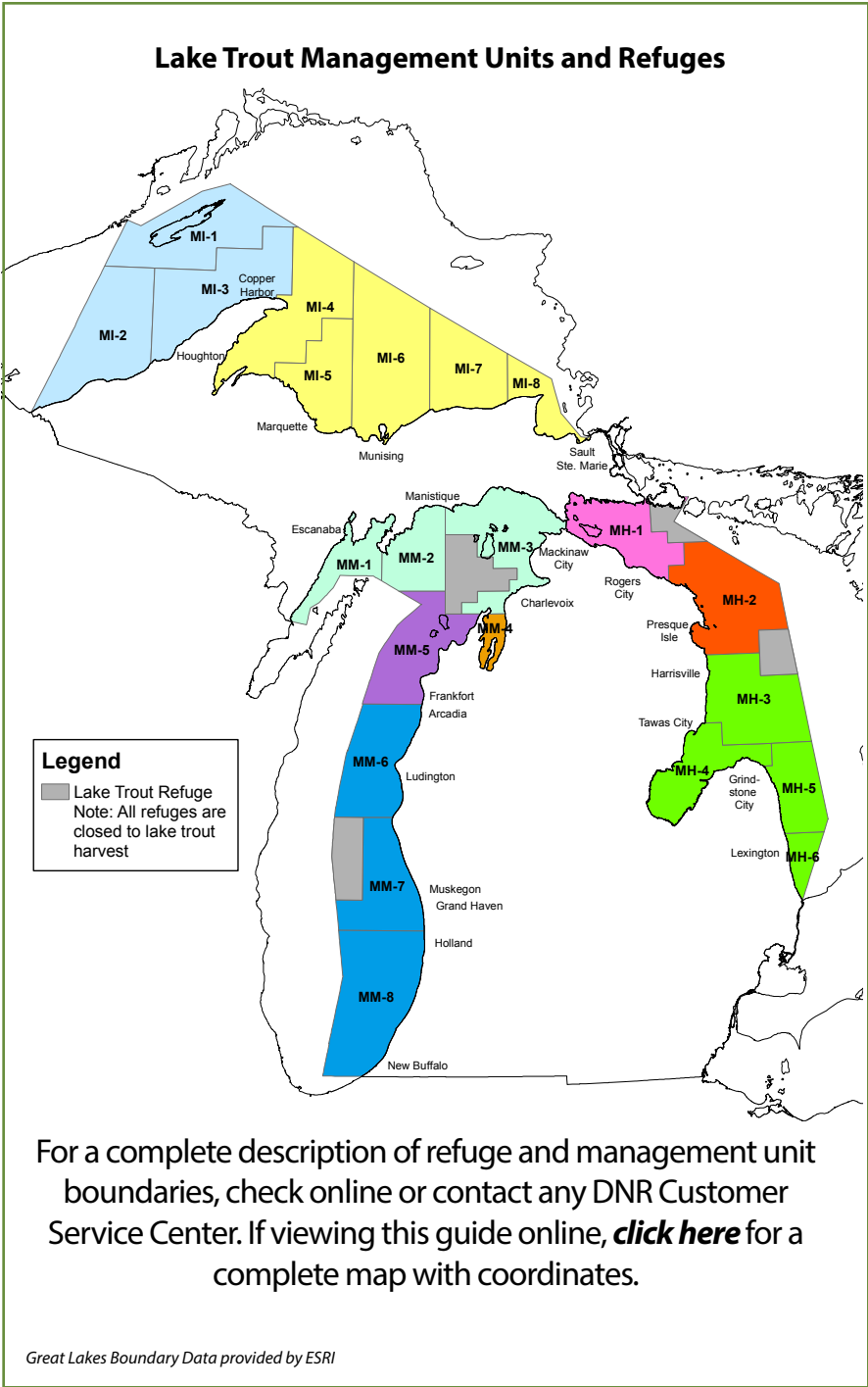


Marked and Tagged Fish

In evaluating fish stocks, the DNR often marks fish with a visible tag, an internal tag or fin clips. If you catch a tagged fish, please record the tag number and as much of the following information as possible: species, length, weight, sex and the date and location caught. Enter the data online at Michigan.gov/eyesinthefield or take it to the nearest drop off location (see Michigan.gov/taggedfish, "Coded Wire Tags"). If releasing the fish, carefully remove and retain the tag from all species EXCEPT lake sturgeon. This will allow for more accurate recording of the tag number.

Many Great Lakes trout or salmon have been marked with a microscopic coded-wire tag implanted in the head of the fish. Fish with these tags can be identified by the absence of the adipose fin. If you catch and keep a trout or salmon with ONLY its adipose fin missing, that fish could have such a tag. Please record the species, length, weight, sex and the date and location caught; freeze only the head and take it to your nearest drop site location as indicated above.





For lake trout and splake, the size limit information and the season information is noted in the table below. The daily possession limit for lake trout and splake is 5 in any combination, but no more than 3 of any one species, EXCEPT in L. Superior where up to 5 lake trout may be possessed, as noted in Table 4 below. Any changes will be posted on the DNR website (Michigan.gov/fishing) and in a pre-recorded message at 888-367-7060.

Lake Trout Management Unit, Major Ports	Possession Season	Size Restrictions (inches)	Maximum Lake Trout Possession Limit
L. SUPERIOR: map color coded by unit regulations			
MI 1-3: Windigo, Ontonagon, Copper Harbor	Open All Year	The minimum size limit for lake trout and splake shall be 15"; the daily possession limit shall not include more than 1 lake trout 34" or greater.	3
MI 4-8: Big Bay, Marquette, Au Train, Munising, Grand Marais, Pindills Bay, Brimley State Park			5
L. HURON: map color coded by unit regulations			
MH 1: DeTour, Cedarville, St. Ignace, Mackinaw City, Cheboygan, Rogers City	Jan. 1 - Sep. 30 (lake trout and splake)	The minimum size limit for lake trout and splake shall be 15".	2
MH-2: Presque Isle, Rockport, Alpena, Black R.			3
MH 3-6: Harrisville, Tawas, Grindstone, Harbor Beach, Lexington	Open All Year (lake trout and splake)		
L. MICHIGAN: map color coded by unit regulations			
MM 1-3: Menominee, Escanaba, Manistique, Harbor Springs, Charlevoix	Jan. 1 - Sep. 30 (lake trout and splake)	The minimum size limit for lake trout and splake shall be 15".	2
MM 4: Elk Rapids, Traverse City, Northport			1
MM 5: Leland, Frankfort, Platte Bay			2
MM 6-8: Arcadia, Manistee, Ludington, Grand Haven, Holland, New Buffalo	Open All Year (lake trout and splake)	The minimum size limit for lake trout and splake shall be 15".	3

Regulations for Frogs, Toads, Salamanders, Turtles, Lizards and Snakes

Amphibians and reptiles MAY NOT be shot with firearms (including spring, air, or gas propelled), bow and arrow, or crossbow.

The following shall not be taken or possessed except as authorized by the Director of the Department of Natural Resources: **Blanding's, spotted, wood, and eastern box turtles; black rat snake, Butler's garter snake, eastern fox snake, copper-bellied water snake, Kirtland's snake, queen snake, smooth green snake, and eastern massasauga rattlesnake; boreal chorus frog, Blanchard's cricket frog, pickerel frog, and Fowler's toad; mudpuppy; small-mouthed salamander, marbled salamander, six-lined racerunner, and western lesser siren;** all reptile eggs; and amphibians and reptiles protected under Part 365 (Endangered Species) of 1994 P.A. 451. For further information check online at Michigan.gov/fishing or contact any Customer Service Center, see p. 65.

Personal Use: A fishing license is required to take amphibians and reptiles for personal use. Reptiles and amphibians may not be bought, sold or offered for sale.

Hand, trap, nets, seines (up to 12 x 4 feet overall dimensions), and hook-and-line may be used. Set lines may not be used to take turtles.

Frogs may be speared but NOT with the aid of an artificial light.

Traps used (or possessed) in areas frequented by reptiles must have a plate or tag attached bearing the name and address of the user in legible English.

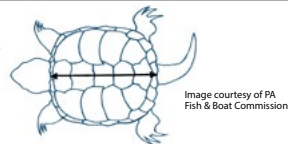
For taking turtles, no more than 3 traps may be used, mesh traps must be no less than 1" mesh, and traps must be set to allow turtles to surface and breathe.

It is illegal to possess or transport in the field, dressed or processed reptiles or amphibians that cannot be measured or identified.

Snapping turtle carapace length: to obtain the carapace (top of shell) length, use a flexible tape to measure from the nuchal scute (the scute directly behind the turtle's head) to the base of the notch where the two most posterior scutes meet (see image below).

Species	Season	Minimum Size (inches)	Daily Possession Limit	Total Possession Limit
Frogs, toads, salamanders	Last Sat. in May - Nov. 15	none	10 in any combination	10 in any combination
Snapping turtles (NOTE 1)	July 15 - Sep. 15	13" minimum carapace length	2 in combination (no more than 1 of either species)	4 total in combination (no more than 2 of either species)
Softshell turtles		none		
All other turtles (painted, musk, map, red-eared slider); snakes and lizards	Open All Year	none	3 in combination (However, no more than 2 turtles and no more than 1 of any one turtle species)	6 total in combination (However, no more than 4 turtles and no more than 2 of any one turtle species)

NOTE 1: Carapace length: use a flexible tape to measure from the shell behind the turtle's head to the posterior end of the shell.



The following restrictions apply for the species, seasons and waters listed below:

- Nets and seines may not be fished within 100' of any dam.
- Hand nets may be of any circumference and handle length, except for taking minnows (see p. 10).
- Dip nets may not exceed 9' x 9' square.
- There is a two-gallon daily possession limit on smelt.
- Seines may not exceed 12' x 4' and may only be used for minnows except under a scientific collector's permit issued by the DNR.
- Hoop nets shall be no larger than 36" in diameter and no longer than 7' in length.
- NOTE:** Check Definitions and Terms (pp. 8-9) for more information.

Table 5: General Netting Regulations

Season	Gear	**Species	*Waters
March 1 – May 31	Hand Net	Bowfin, Carp, Goldfish, Gizzard Shad, Longnose Gar, Smelt, Suckers	All Great Lakes, L. St. Clair, St. Clair R., Detroit R., and St. Marys R. including all tributaries to those waters from the mouth to ½ mile upstream (except that Thompson Cr. ([Schoolcraft Co.], is closed). See List A for inland streams open to hand netting.
March 20 – May 31	Dip Net	Bowfin, Carp, Goldfish, Gizzard Shad, Longnose Gar, Smelt, Suckers	All Lower Peninsula and Upper Peninsula streams, except Designated Trout Streams. See List B for additional streams closed to dip netting.
Dec. 15 – end of Feb.	Hoop Net	Burbot (permit required from local DNR office)	Peshekee R. (Marquette Co.); Au Train R. (Alger Co.) from Au Train L. to mouth; Sturgeon R. (Baraga Co.) from M-38 bridge to mouth; Sturgeon R. (Houghton Co.).
Open all year	Seine, Hand Net, Dip Net	Minnows	All waters, except Designated Trout Streams and those waters closed to minnow harvest.
Open all year	Cast Net	Alewife, Minnows, Smelt, Gizzard Shad	Great Lakes, L. St. Clair, St. Clair R., Detroit R., and St. Marys R.

*Review the netting exceptions list below and p. 24 for regulations that differ from those listed in the table above.

**For the purpose of this Order the term "suckers" refers to: suckers (longnose, white, northern hog, spotted), redbore (silver, golden, black, greater, shorthead), buffalo (bigmouth, black), lake chubsucker, and quillback carpsucker. The term "minnows" refers to small baitfish used as bait: chubs, shiners, dace, stonerollers, sculpins (muddlers), mudminnows, and suckers.

Netting Exceptions

LIST A – Inland Waters Open to Hand Netting

The following inland waters are open to use of hand nets from March 1–May 31 for Bowfin, Carp, Goldfish, Gizzard Shad, Longnose Gar, Smelt, and Suckers:

Alger: Towes Cr.; W. Br. Whitefish R. from Sea Lamprey Barrier (T44N, R21W, S29) downstream 500' to posted signs; **Charlevoix:** L. Charlevoix and tributaries to 1/2 mile upstream; **Chippewa:** Trout Cr. down from Big Trout L. (T42N, R3E, S31); Prentiss Cr. (T42N, R2E); **Delta:** Days R. from sea lamprey barrier downstream for 500'; Rapid R. from Rapid River Falls (T42N, R21W, S19) down to Co. Rd S15; Escanaba R. from mouth to 1st dam upstream of US-2; Ford R. down from Jaeger Rd.; **Houghton:** Portage L. and tributaries to 1/2 mile upstream; N. and S. Portage Canal and tributaries to 1/2 mile upstream; Torch L. and tributaries to 1/2 mile upstream; **Luce:** Little Two Hearted R. from mouth upstream to bridge on Co. Rd. 412 (T50N, R9W, S25); **Mackinac:** Doe Cr. (T43N, R10W, S9); Foley Cr. down from I-75; Hoban Cr. down from US-2; Hudson Cr. (T41N, R11W, S8); Martineau Cr. down from I-75; McClouds Cr.; Milakokia R., Milakokia L. down to Heinz L.; Norton Cr. from

M-135 down to S. Manistique L.; Nunn's Cr. from M-134 to mouth; Pearson's Cr. (T42N, R1W and R1E); Rabbits Back Cr. down from Mackinac Trail; Scrams Cr. (T42N, R11W, S11); Taylor Cr. (T43N, R12W, S2, 11, 12, 13); **Manistee:** Little Bear Cr. down from Bear L. to trunkline US-31; **Menominee:** Big Cedar R. down from mouth of Elwood Cr. (T35N, R25W, S11).

LIST B – Inland Streams Closed to Dip Netting

It shall be unlawful to take or attempt to take any species of fish with dip nets on the following named streams:

Arenac: Au Gres R. from Saginaw Bay upstream to M-65 (T22N, R5E, S26); Rifle R. from Steve's Rd. (T19N, R5E, S9) upstream; **Benzie:** Cold Cr. from Crystal L. (T26N, R15W, S26) upstream; **Grand Traverse:** Unnamed Cr. from Green L. (T26N, R12W, S20) upstream to Bridges L.; **Iosco:** Au Gres R. from Saginaw Bay upstream to M-65 (T22N, R5E, S26); **Leelanau:** Houdek Cr. from North Lake Leelanau (T31N, R12W, S35) upstream; **Monroe:** Huron R. from L. Erie upstream to Belleville Dam; Stony Cr. from L. Erie upstream to Finzel Rd. (T55, R8E, S23); **Wayne:** Huron R. from L. Erie upstream to Belleville Dam.

These rules and regulations supersede all others governing fishing on Michigan-Wisconsin Boundary Waters that in any way conflict. Where regulations of Michigan and Wisconsin differ, persons shall comply with the regulations of the state in whose territorial waters they are fishing.

The interstate boundary waters in which fishing is to be governed by the special regulations are: The **L. Michigan waters between the breakwalls at the mouth of the Menominee R. beginning at an imaginary line drawn between the most lakeward point of each breakwall. Menominee R., its sloughs and impoundments** (Menominee, Dickinson, Iron Cos., Michigan; Florence, Marinette Cos., Wisconsin); **Brule R.** (Iron Co., Michigan; Florence and Forest Cos., Wisconsin); **Brule Island Impoundment**, upstream to a line running east-west through the first island upstream from the junction of the Brule and Paint Rivers (Iron Co., Michigan; Florence Co., Wisconsin); **Smoky L.** (Iron Co., Michigan; Vilas Co., Wisconsin); **Norwood L., Lac Vieux Desert, Crystal L., Mill L., Big Bateau L., Mamie L.** (Cisco Chain), **West Bay L.** (Cisco Chain), **Big L.** (Cisco Chain), **Crampton L., Plum L., Tenderfoot L., Roach L., Little Presque Isle L., Cyrus L., Basin L., Stateline L.** (Gogebic Co., Michigan; Vilas Co., Wisconsin); **East Fork Montreal R. up to the mouth of Layman Cr.** (Gogebic Co., Michigan; Iron Co., Wisconsin); **Montreal R.** (Gogebic Co., Michigan; Iron Co., Wisconsin).

NOTE: Cowboy Lake (Dickinson Co.), west of Iron Mountain, is NOT part of the MI-WI Boundary Waters.

Legal fishing methods

- Up to 3 lines per person with a total of 3 hooks or baits may be used.
- Lines must be attended at all times.
- Dip nets not exceeding 9 feet square or in diameter, without walls may be used in the Menominee R. from April 1- May 14 for taking of suckers, redhorse, carp, smelt, and burbot (except from Hattie Street Bridge in Marinette-Menominee to the first dam upstream and within 200 feet of all other dams).
- Fish shanties used in ice fishing must be legibly marked with the name and address of owner, and persons placing a shanty on these waters shall remove the shanty by midnight of March 15. In Wisconsin boundary waters, fish shanty doors cannot be locked from inside during occupancy.
- Crayfish may not be possessed or used for bait on Michigan-Wisconsin boundary waters.
- All residents of Michigan and Wisconsin holding a resident sport fishing license from their respective state, or residents of states other than

Michigan and Wisconsin holding a sport fishing license issued by either Michigan or Wisconsin, may fish in the boundary waters.

Weekly Fishing Report

Each week discover the latest fishing hot spots and tips used to catch specific species all throughout Michigan—all courtesy of the DNR's Weekly Fishing Report! Here's how you can access the report:

- on the phone at 855-777-0908,
- online at ***Michigan.gov/fishingreport***,
- or to your email inbox by clicking on the red envelope at ***Michigan.gov/dnr***!

Go fishing with your family

Find a great place to fish that is easy to access, has a high likelihood of catching fish, and is all-around family friendly!

Visit ***michigan.gov/fishing*** and look for the red-and-white bobber to get started! You'll find a map of Michigan. Click on any county to find family-friendly fishing locations in that area.



michigan.gov/fishing



Table 7: Michigan-Wisconsin Boundary Water Regulations

(Hook & Line Only -- Use of spear, bow & arrow and crossbow prohibited)

Species (NOTE 1)	Waters	Seasons	Minimum Size (inches)	Daily Possession Limit
Trout, Salmon	Smoky L., Montreal R., and Menominee R. mouths to 1st dam.	Open All Year	10"	5
	Menominee R. and Montreal R. above 1st dam. Brule R. mouth to US-2	Last Sat. in April - Sep. 30	7"	
	Brule R. above US-2 bridge		Brook Trout 8" Brown Trout 12"	
Smallmouth Bass Largemouth Bass	All boundary waters	Open All Year	Catch-and-Immediate-Release	
		3rd Sat. in June - Nov. 30	14"	5 in combination
Walleye, Sauger	All boundary waters except rivers and impoundments	1st Sat. in May - March 1	15"	5 in combination
	All rivers and impoundments	March 2 - Fri. before 1st Sat. in May		1
		1st Sat. in May - March 1		5 in combination (See NOTE 2)
Northern Pike	All boundary waters	1st Sat. in May - March 1	none	5
Bluegills, Crappies, Sunfish, Yellow Perch	All boundary waters	Open All Year	none	25 in combination
Muskellunge (including Tiger Muskellunge)	All boundary waters	Open All Year	Catch-and-Immediate-Release	
		1st Sat. in June - Nov. 30	42"	(See NOTE 3)
Lake Sturgeon	All boundary waters	1st Sat. in Sep. - Sep. 30	60"	(See NOTE 4)
Channel Catfish	All boundary waters	Open All Year	none	10
Lake Whitefish Cisco (Lake Herring)	All boundary waters	Open All Year	none	10 in combination
All others	All boundary waters	Open All Year	none	none

NOTE 1: Fishing for trout is not allowed during the closed season in the Brule R. upstream from U.S. Hwy 2 Bridge (T41N, R32W, S9) Iron Co., MI and the Montreal R. above Superior Falls flowage. **NOTE 2:** On Lac Vieux Desert, the daily limit for walleye is 3 with a minimum size limit of 18". **NOTE 3:** Anglers who harvest a muskellunge can report by calling 844-345-FISH (3474) or by going online at ***Michigan.gov/registerfish***. For more information see p. 9. Muskellunge harvest is limited to 1 per angler per year (April 1 - March 31). **NOTE 4:** Anglers who harvest a lake sturgeon can report by calling 844-345-FISH (3474) or by going online at ***Michigan.gov/registerfish***. For more information see p. 9. For the Menominee River, from Grand Rapids Dam downstream to the end of the breakwalls in Green Bay, the daily possession limit for lake sturgeon is 0, catch-and-immediate-release sturgeon fishing only. Lake sturgeon fishing and harvest tag no longer required or available. Lake sturgeon harvest is limited to 1 per angler per year (April 1 - March 31).

Residents of Indiana or Michigan may fish the whole lake, but must abide by the regulations in the waters they are fishing. Non-resident license holders (for either state) may only fish in the waters under which the jurisdiction applies for that non-resident license. Non-residents would need Indiana and Michigan non-resident licenses to fish both sides.

Clear Lake - Indiana, St. Joseph Co./**South Clear Lake** - Michigan, Berrien Co., **Indiana Lake** - Indiana, Elkhart Co./Michigan, Cass Co., **Fish Lake** - Indiana, La Grange Co./Michigan, St. Joseph Co., **Lake George** - Indiana, Steuben Co./Michigan, Branch Co., **Long Lake** - Indiana, Steuben Co./Michigan, Hillsdale Co.

SYLVANIA WILDERNESS AREA REGULATIONS

The following lakes in **Gogebic Co.** are subject to special regulations: Banks, East Bear, West Bear, Clark, Corey, Cub, Deer Island, Dorothy, Elsie, Fisher, Florence, Germain, Glimmerglass, Golden Silence, Hay, Helen, High, Honey, Jay, Johnston Springs, Katherine, Kerr, Liluis, Lois, Loon, Louise, Marsh, Moss, Mountain, Snap Jack, Trapper and Whitefish Lakes.

Seasons: Statewide seasons apply for all fish species, **except that no fishing shall be allowed before the last Sat. in April or after Oct. 31 of each year.**

michigan
OUT-OF-DOORS
MICHIGAN'S PREMIUM OUTDOOR JOURNAL SINCE 1947



WWW.MICHIGANOUTOFDOORS.COM

SUBSCRIBE AT MUCC.ORG BY BECOMING A MEMBER
OF MICHIGAN UNITED CONSERVATION CLUBS

\$27/YEAR
ENTER PROMO CODE
FISH
TO RECEIVE THE 10% DISCOUNT



Size Limits

- Lake trout: not less than 30".
- Walleye: not less than 20".
- Northern pike: not less than 30".
- All other species: no size limit.

Possession Limits

- Largemouth or smallmouth bass must be returned immediately to the water without injury and may not be possessed on the special provision lakes of the Sylvania Wilderness Area.
- Northern pike, walleye and lake trout: not more than 1 fish of any of these species.
- All other species: 10 singly or in any combination of species.

Method of Take

- Hook-and-line fishing only, not to exceed 3 lines to which may be attached a total of 6 hooks on all lines. All hooks attached to a manufactured artificial lure shall be counted as 1 hook.
- Only artificial lures with barbless hooks may be used. "Artificial lure" means any lure that is man-made, in imitation of or as a substitute for natural bait, used to attract fish for the purpose of taking them, and shall include artificial flies. Barbless hooks are defined as a hook from which all barbs have been deleted when manufactured, filed off, or pinched down.
- Live bait, dead or preserved bait or organic or processed food may not be used or possessed at any time on special provision Sylvania Wilderness Area lakes.

A fish disease known as Viral Hemorrhagic Septicemia (VHS) was discovered in Michigan waters. In an attempt to slow the spread of fish diseases like VHS, the following regulations have been put into place. NOTE: the regulations in effect concern only those species listed on the right. Be sure to check Michigan.gov/vhs for the most up-to-date regulations and information.

Baitfish Exclusion Zones

The following locations are vital to hatchery operations and require greater protection. Therefore, baitfish shall not be used or possessed on the following waters:

Benzie Co.: Brundage Cr. and tribs., Kinney Cr. and Stanley Cr., from its confluence with the Platte R. (T26N, R13W, S7), to their headwaters, including Brundage Spring Pond.

Chippewa Co.: Pendills L. (T47N, R4W, S25, 26) including tributary Pendills Cr. downstream to its confluence with L. Superior (T47N, R4W, S28). Sullivan Cr. from its headwaters (T46N, R4W, S32) downstream to its confluence with the N. Br. of the Pine R. (T45N, R4W, S23). Viddian Cr. from its headwaters (T47N, R4W, S32) downstream to its confluence with Pendills Cr. (T47N, R4W, S28).

Marquette Co.: Cherry Cr. from the location of the Cherry Creek Rd. (T47N, R24W, S18) to the headwaters at County Rd 480 (T47N, R25W, S22).

General Statewide Provisions

1. A person shall not stock baitfish, live fish or roe in public waters of the state prior to receiving a Fish Stocking Permit from the department and the permit must be in possession when transporting and stocking the fish. It is unlawful to import any uncertified baitfish species found on the list of VHS Fish Species.
2. Fish caught in a waterbody should only be released into the waterbody where originally caught and not transferred into another location where the fish could not have freely moved to.
3. All baitfish or fish collected for personal use as bait or cut bait shall only be used for fishing purposes in the original waters of collection and must be used on a hook.
4. A person who trailers a boat over land shall drain all water from the live well(s) and the bilge of their boat upon leaving any body of water.

Help Michigan's waters stay world-class, put unused bait in the trash!

VHS Fish Species

Atlantic salmon	Muskellunge
Black bullhead	Northern pike
Black crappie	N. redbelly dace
Bluegill	Pacific herring
Bluntnose minnow	Pumpkinseed
Brook trout	Rainbow smelt
Brown bullhead	Rainbow trout
Channel catfish	Redear sunfish
Cisco (lake herring)	Rock bass
Common shiner	Sand shiner
Creek chub	Smallmouth bass
Emerald shiner	Spotfin shiner
Fathead minnow	Spottail shiner
Flathead catfish	Walleye
Golden shiner	Warmouth
Green sunfish	White bass
Hybrid sunfish	White crappie
Lake trout	White sucker
Lake whitefish	Yellow bullhead
Largemouth bass	Yellow perch

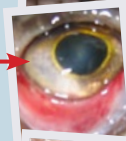
VHS Clinical Signs

Photos from Dr. Mohamed Faisal, MSU

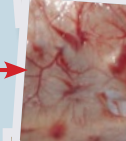
Hemorrhagic areas on skin
Gizzard Shad, Lake St Clair



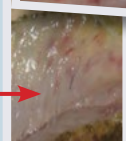
Hemorrhagic areas near eye
Yellow perch, Lake St. Clair



Typical hemorrhagic areas in swim bladder
Yellow perch, Lake St. Clair



Hemorrhagic areas in muscle tissue
Yellow perch, Lake St. Clair



Exceptions to General Regulations by County

Many water bodies have special regulations that differ from the general Hook & Line Fishing (Table 1, p. 12), General Netting (Table 5, p. 23), and Bow and Spear Fishing regulations (Table 3, pp. 16-17). The following is a list of waters, organized by county, with special regulations **that are NOT included in the following sections of the Fishing Guide:** General Regulations tables cited above; Special Northern Pike and Muskellunge Regulations (see pp. 13-14); Michigan-Wisconsin Boundary Regulations (see pp. 24-25); and Sylvania Wilderness Area Regulations (see p. 26).

Alger:

Rock R. closed to fishing from dam to lower foot bridge downstream from M-28 April 1 - June 30. **Duck and Echo Lks.** (Grand Island), catch-and-release on smallmouth bass. **Pictured Rocks National Lakeshore** (contact park for regulation specifics 906-387-3700).

Allegan:

Swan Cr. from mouth upstream to the dam on 118th Ave. restricted to only one single-pointed, unweighted hook no larger than **1/2"** from point to shank.

Antrim:

Intermediate R. closed to all fishing from Bellaire Dam to M-88 Bridge April 1 - May 14.

Arenac:

Saganing Cr. (upstream from State Rd.) and **Pine R.** (upstream from State Rd.) closed to fishing March 16 - Fri. before last Sat. in April.

Baraga:

Lakes of Craig Lake State Park (Clair, Craig, Crooked, Keewaydin, Nelligan, Teddy, and Thomas Lks.) artificial lures only; northern pike, muskellunge, largemouth bass, and smallmouth bass must be released, minimum size on walleye is 15", no size limit on other species; possession limit on walleye is 2; otherwise, all general rules apply. Motorboats of all types prohibited on all except Thomas and Keewaydin Lks.; **Sturgeon R.** from Prickett Dam downstream to mouth of Clear Cr. (T50N, R35W, S12) closed to all fishing April 1 - June 30.

Barry:

Williams L. open season is last Sat. in April - Dec. 15, catch-and-immediate-release only.

Bay:

Kawkawlin R. and all tributaries upstream of Euclid Ave., and **Saganing Cr.** (upstream from State Rd.) and **Pine R.** (upstream from State Rd.) closed to fishing March 16 - Fri. before the last Sat. in April. On the **Kawkawlin R.** downstream from Euclid Ave. and the **Saginaw R.** and all tributaries, the following regulations apply from March 16 - Fri.

before the last Sat. in April: unlawful to fish with artificial baits or minnows (except that minnows may be used on both the **Saginaw R.** main stem and **Kawkawlin R. main stem**); natural baits may be fished only on a single-pointed hook with not more than 1/2" between point and shank; weights may not be attached rigidly to hooks; no hook may be attached to the line between any weight and the rod except on an unweighted dropper line at least 3" long; no beads, spinners or reflectors may be attached to the line within 6" of any hook.

Benzie:

Platte R. restricted to only one single-pointed, unweighted hook no larger than **1/2"** from point to shank; closed to fishing within 300 ft. of upper (hatchery) weir whenever weir is in place and closed within 300 ft. of lower weir whenever weir is in place; closed to fishing from US-31 bridge at Veteran's Park downstream to **Platte L.** Jan. 1 - March 31. **Betsie R.** closed to fishing all year within 100 feet of lamprey barrier and fish passage facility (T25N, R15W, S2). On all waters of the **Betsie R.** special artificial lure regulations apply (see p. 8).

Berrien:

Townsend Cr. (T6S, R17W, S19), and the mouth area of Lake Chapin, to a point 100 yards below the Townsend Cr. mouth into Lake Chapin, it is unlawful to use other than one single-pointed, unweighted hook measuring **1/2"** or less from point to shank.

Calhoun:

Harts L. catch-and-release only for all species.

Cass:

Corey, Little Crooked and Stone Lks. bass minimum size limit is 10".

Charlevoix:

Medusa Cr. and area of L. Michigan for a radius of 100' of mouth closed to fishing when weir is in place. **Boyne R.** from mouth upstream to dam (T32N, R5W, S5) restricted to one single-pointed, unweighted hook no larger than **1/2"** from point to shank. On **L. Michigan**, within one-half mile of the following islands of the **Beaver Island Archipelago: Beaver, Garden, High and Hog** the possession season for largemouth and smallmouth bass is July 1 - Dec.

31 and open to bass catch-and-immediate-release all year.

Cheboygan:

Cheboygan R. from the south end of the outermost breakwall at Mullet L. downstream to Cheboygan Dam, and Black R. from Alverno Dam downstream to its confluence with the Cheboygan R.: the possession season for walleye shall be **May 15 - March 15, inclusive. Cheboygan R., Indian R., or Black R.** unlawful to fish during April 1 - June 15 with spear, bow and arrow, crossbow, dip net or gaff. **Black R.** between Kleber Dam and Red Bridge (T35N, R1E, S5) unlawful to fish in any manner during **April 1 - June 15. Lower Black R.** from Alverno Dam down to Mograin Bridge, no fishing April 1 - May 14. **Black L. and tributaries** no commercial minnow take; sturgeon fishing prohibited except under special season (see p. 15). **Douglas L. Pike Marsh** closed to fishing when marsh is in operation.

Chippewa:

Potagannissing R. from Potagannissing Dam downstream to Maxton Rd. (T42N, R6E, S15) closed to fishing March 16 - May 14.

Crawford:

Wakeley L. open season June 15 - Aug. 31, catch-and-release fishing with artificial lures only. It shall be unlawful to use or possess live bait, dead bait or organic or processed food at any time on the shore or water. **Jones L.** open season June 1 - Sep. 30, catch-and-release fishing with artificial lures only. It shall be unlawful to use or possess live bait, dead bait or organic or processed food at any time on the shore or water.

Delta:

Little Bay de Noc north of a line drawn from Peninsula Point Lighthouse to the mouth of the Bark R.; no more than 1 walleye 23" or greater in daily possession limit. **Rapid R. Borrow Pit** (Stockyard Pond, T40N, R21W, S5) closed to fishing all year.

Dickinson:

See also Michigan-Wisconsin Boundary Waters Regulations (see pp. 24-25). **Fumee L.** county ordinance currently prohibits access for the purpose of fishing.

Emmet:

Bear R. from mouth upstream to Lake Street Dam (T34N, R5W, S6) restricted to one single-pointed, unweighted hook no larger than **1/2"** from point to shank.

Genesee:

Flint R. downstream from the Holloway Dam and all tributaries, the following regulations apply from March 16 - Fri. before the last Sat. in April: unlawful to fish with artificial baits or minnows (except that minnows may be used upstream of Hamilton St. Dam and all respective tributaries T7N, R7E, S7); natural baits may be fished only on a single-pointed hook with not more than 1/2" between point and shank; weights may not be rigidly attached to hooks; no hook may be attached to the line between any weight and the rod except on an unweighted dropper line at least 3" long; no beads, spinners or reflectors may be attached to the line within 6" of any hook.

Gogebic:

L. Gogebic the daily possession limit for yellow perch is 25 with no more than 5 yellow perch 12" or greater. Anglers may possess up to 2 walleye between 13" - 15" as part of their daily possession limit of walleye. See also Michigan-Wisconsin Boundary Waters Regulations (see pp. 24-25). **Sylvania Wilderness Area** regulations (see p. 26).

Grand Traverse:

Boardman R. closed to fishing whenever weir is in place from 300' above to 300' below. **Arbutus and Spider Lks.** bass minimum size limit is 10".

Ionia:

Woodard L., bass minimum size limit is 10".

Iosco:

Au Gres R. from 50' upstream of Allen Rd. bridge to 500' downstream closed to all fishing March 16 - Fri. before last Sat. in April. **E. Br. Au Gres R.** between DNR lamprey barrier and Legget Rd. closed to fishing Dec. 1 - Fri. before last Sat. in April. **Au Sable R.** from Foote Dam (including the apron) to 175' downstream from the dam closed to fishing all year.

Iron:

See also Michigan-Wisconsin Boundary Waters Regulations (see pp. 24-25). **Chicago L. and L. Ottawa,** daily possession limit of whitefish and cisco (lake herring) is 5 in any combination. **L. Ottawa** no possession of bass. **Fire and Indian Lks.** bass possession limit is 1 fish and minimum size limit is 18".

Isle Royale National Park:

Michigan fishing laws apply and state license required on L. Superior waters of park. Artificial baits only on inland waters. On L. Superior, within 4.5 miles of Isle Royale, no possession of brook trout. (Contact park for specific regulations 906-482-0984)

Kalkaska:

Cub L. (T27N, R5W, S19) bass minimum size limit is 10".

Lake:

Big Bass L. (T20N, R14W, S34) bass minimum size limit is 10". On all waters of the **Pere Marquette R.** and **Little Manistee R.** special artificial lure regulations apply (see p. 8).

Leelanau:

North Manitou L. bass minimum size limit is 18", the possession limit is 1; fishing restricted to artificial lures only; live bait, dead or prepared bait or organic or processed food may not be possessed on the water or the shore. **Florence L.** (S. Manitou Is.) fishing restricted to artificial lures only; live bait, dead or prepared bait or organic or processed food may not be possessed on the water or the shore. **Hatlem's Cr.**, it is unlawful to take or attempt to take minnows for personal use.

Livingston:

Spring Mill Pond (Island Lake Recreation Area) March 15 - March 31 no fishing; April 1 - Fri. before the last Sat. in April, catch-and-immediate-release of trout with artificial lures only; last Sat. in April - March 14 statewide regulations apply. No person shall take or attempt to take minnows for personal use from **Kent L.** including the Huron R. upstream to the Hubbell Millpond dam in Milford.

Luce:

Unlawful to launch or retrieve motorized vessel (greater than 5 horsepower) from state land on the **E. Branch Fox R.** from M-28 to the mouth of Cold Cr.

Macomb:

On the Clinton R. cut-off channel (T2N, R13E): from spillway weir to the Harper Rd. Bridge: the following regulations apply from March 16 - Fri. before the last Sat. in April: unlawful to fish with artificial baits or minnows; natural baits may be fished only on a single-pointed hook with not more than 1/2" between point and shank; weights may not be rigidly attached to hooks; no hook may be attached to the line between any weight and the rod except on an unweighted dropper line at least 3' long; no beads, spinners, or reflectors may be attached to the line within 6" of any hook.

Manistee:

Little Manistee R. 300' above and below the DNR weir is closed to fishing all year; from 300' above DNR weir to Spencers Bridge closed to fishing Jan. 1 - March 31; also from 300' below DNR weir to mouth closed to fishing Sep. 1 - Nov. 14 and Jan. 1 - March 31. On all waters of the **Betsie R.**, all waters of **Bear Cr.** (Manistee Co.), all waters of the **Little**

Manistee R., and the **Manistee R.** from Tippy Dam downstream to Railroad Bridge below M-55 (T21N, R16W, S6), an artificial lure is defined as a body bait, plug, spinner or spoon (as described on p. 8).

Marquette:

Deer L. Basin, Carp R. downstream from M-28 (T47N, R27W, S4), and **all other tributaries to Deer L. Basin** fishing restricted to artificial lures, catch-and-release only; live bait, dead or prepared bait or organic or processed food may not be possessed on the water or the shore. **Fish L.** bass minimum size 18" and possession limit is 1 bass only. **Salmon-Trout R.**, from Lower Falls to mouth closed to fishing Aug. 15 - Fri. before last Sat. in April.

Mason:

On the **Sable R.** from mouth upstream to Hamlin Lake Dam, all waters of the **Little Manistee R.**, all waters of the **N. Br. Pentwater R.**, and on all waters of the **Pere Marquette R.** special artificial lure regulations apply (see p. 8).

Menominee:

Michigan waters of Green Bay: see note 3 p. 13. See also Michigan-Wisconsin Boundary Waters Regulations (see pp. 24-25).

Midland:

Tittabawassee R. between Sanford Dam and mouth of the **Salt R.** and between Dow Dam and Gordonville Bridge, closed to fishing from March 16 - Fri. before last Sat. in April. **On the Chippewa, Pine, Salt, and Tittabawassee R. and all their tributaries** the following regulations apply from March 16 - Fri. before the last Sat. in April: unlawful to fish with artificial baits or minnows; natural baits may be fished only on a single-pointed hook with not more than 1/2" between point and shank; weights may not be rigidly attached to hooks; no hook may be attached to the line between any weight and the rod except on an unweighted dropper line at least 3" long; no beads, spinners or reflectors may be attached to the line within 6" of any hook.

Montmorency:

East Fish, West Fish, and Middle Fish Lks., Fuller Cr. Pond, Hunt Cr. (above Section Z bulkhead T29N, R2E, S25), and **Fuller Cr.** (in the Hunt Cr. Trout Research Station Area), no fishing. **North and South Blue Lks.**, open season is the last Sat. in April - Sep. 30, catch-and-immediate-release only, artificial lures only.

Muskegon:

On all waters of the **White R. (from mouth upstream to Hesperia Dam) and all waters of the N. Br. White River and Muskegon R. (upstream to Croton Dam)** special artificial lure regulations apply (see p. 8).

Newaygo:

Baptist L., no possession of walleye, channel catfish, flathead catfish or bullheads; **Brush and Sand Lks.** no possession of channel catfish, flathead catfish or bullheads. **Crystal L.**, no possession of walleye. On all waters of the **Pere Marquette R.** and **Muskegon R. (upstream to Croton Dam)** special artificial lure regulations apply (see p. 8).

Oakland:

Upper Bushman L. catch-and-immediate-release only for all species. No person shall take or attempt to take minnows for personal use from **Kent L.** including the **Huron R.** upstream to the Hubbell Millpond Dam in Milford.

Oceana:

No person shall take or attempt to take minnows for personal use from **Silver L. and all tributaries.** On all waters of the **Pere Marquette R., White R. (from mouth upstream to Hesperia Dam) and all waters of the N. Br. White River and all waters of the N. Br. Pentwater R. and S. Br. Pentwater R. (upstream to Hart Dam)** special artificial lure regulations apply (see p. 8).

Ontonagon:

L. Gogebic the daily possession limit for yellow perch is 25 with no more than 5 yellow perch 12" or greater. Anglers may possess up to 2 walleye between 13" - 15" as part of their daily possession limit of walleye. **W. Br. Ontonagon R.** from its confluence with the Victoria Hydro station tailrace (T50N, R39W, SE 1/4 of the SW 1/4 of S29) upstream to Victoria Dam, including the tailrace canal, is closed to fishing April 1 - Jun. 10. **Lake of the Clouds** fishing restricted to artificial lures only. It shall be unlawful to use or possess live bait, dead bait or organic or processed food at any time on the shore or water. No spearing, no possession of smallmouth bass. **Ontonagon R.** no more than 1 walleye over 23" may be possessed in the daily possession limit.

Otsego:

Otsego L. Pike Marsh closed to fishing whenever marsh is in operation. **Otsego L.** see lake sturgeon regulations (see p. 15).

Presque Isle:

Clinton Cr. closed to fishing April 1 - May 14. **Grand L. Pike Marsh** unlawful for any person other than state employee to use or operate a motorized vehicle on the access road leading from US-23 to the Grand L. Pike Marsh during March - May, closed to fishing whenever marsh is operating. **Rainy R.** from confluence with Black L. upstream to N. Allis Rd. Bridge (T35N, R2E, S15) closed to fishing April 1 - May 14. **Shuberts Cr. (Monaghan Cr.)** from Long L. upstream to Clinton Cr. Rd. (T33N, R7E,

S14), closed to fishing April 1 - May 14. **Swan R.** from 300' above weir to mouth closed to fishing whenever weir is in place.

Roscommon:

Backus Cr. from confluence with **Cut R.** upstream to Little Mud L. Dam closed to fishing March 23 - April 23. **Cut R.** from confluence with Backus Cr. upstream to outlet at Marl L. closed to fishing March 23 - April 23.

St. Joseph:

Big Pleasant and Corey Lks. minimum size limit for bass is 10".

Saginaw:

On the Bad, Cass, Flint, Saginaw, Shiawassee and Tittabawassee Rivers and all their tributaries the following regulations apply from March 16 - Fri. before the last Sat. in April: unlawful to fish with artificial baits or minnows, except that minnows may be used on the Saginaw R., Swan Cr. and tributaries, and the Bad R. and tributaries upstream from confluence with Pickerel Cr. (T10N, R3E, S4); natural baits may be fished only on a single-pointed hook with not more than 1/2" between point and shank; weights may not be attached rigidly to hooks; no hook may be attached to the line between any weight and the rod except on an unweighted dropper line at least 3" long; no beads, spinners or reflectors may be attached to the line within 6" of any hook.

Schoolcraft:

Thompson Cr. closed to use of hand nets. **Seney National Wildlife Refuge** waters have limited fishing, contact Refuge office (906-586-9851). On the **Big Island Lakes Complex (Big Island, Bluegill, Byers, Center, Coattail, Cucumber, Farm [Blush], Jarr, Klondike, McInnes, Mid, Neville, Omega, Pear, Townline, Upper and Vance)** no wheeled or motorized vehicles (including electric or outboard motors) are allowed; artificial lures only; no spearing, no netting, and use of live bait prohibited; muskellunge (including tiger muskellunge) fishing season is May 15 - Nov. 30, possession season is 1st Sat. in June - Nov. 30, minimum size limit 42", possession limit is 1 fish per angler per season, anglers must register all harvested muskellunge (see p. 9); northern pike open season May 15 - Nov. 30, minimum size limit 24", and possession limit is 2 northern pike; bass fishing is open from Sat. before Memorial Day - Nov. 30, minimum size limit 18", and possession limit is 1; perch, bluegill and pumpkinseed open season is from last Sat. in April - Nov. 30, possession limit is 5 fish in combination; all other fish no open season. Unlawful to launch or retrieve motorized vessel (greater than 5 horsepower) from state land on the **E. Branch Fox R.** from M-28 to the mouth of Cold Cr.

Van Buren:

Crooked and Little Crooked Lks. bass minimum size limit is 10". **S. Br. Black R.** and all tributaries upstream of Breedsville (Mill Str.) restricted to only one single-pointed, unweighted hook no larger than 1/2" from point to shank.

Washtenaw:

Huron R. from Mast Rd. Bridge in Dexter (T1S, R5E, S32) downstream to Delhi Rd. Bridge (T2S, R5E, S2) catch-and-immediate-release only on bass. **Horseshoe L.** bass possession limit is 1, minimum size is 14"; northern pike possession limit is 1, sunfish (NOTE 5, p. 13) possession limit is 10.



COMFORT ZONE CHARTERS

St. Clair River
Lake St. Clair
Detroit River
Lake Erie

**Walleye
Perch
Bass**

Facebook icon: Captain Jerry Comfort, 586-482-0026
comfzonecharters.com - jercomfort@aol.com

**EAT SAFE FISH – Michigan's Eat Safe Fish Guide**

There are many health benefits to eating fish. However, to get the most benefits, the Michigan Department of Health and Human Services (MDHHS) recommends eating fish that are low in chemical contaminants. You can use the Eat Safe Fish Guide (ESF Guide) to find fish that have been tested for chemicals and are safe for everyone to eat.

- MDHHS tests only the parts of the fish that you eat for chemicals. That's the information used to make the guidelines in the ESF Guide.
- The guidelines in the ESF Guide are safe for everyone to use - including pregnant women, children, and those with illnesses, like cancer or diabetes.
- You can't see or taste the chemicals that can cause health problems. The only way to know if they're in your fish is to use the MDHHS ESF Guide. Get yours today!

Chemicals can be in fish that you catch or buy from anywhere in the world, but there are always good choices for eating. To get a free copy of the MDHHS Eat Safe Fish Guide and other helpful information about choosing and eating safe fish, visit Michigan.gov/eatsafefish or call MDHHS at 1-800-648-6942.

**Angler Rights On Public Streams**

On fenced or posted property or farm property, an angler wading or floating a navigable public stream (for more information call the DNR's Law Enforcement Division at 517-284-6000) may, without written or oral consent, enter upon property within the clearly defined banks of the stream, or without damaging farm products, walk a route as closely proximate to the clearly defined bank as possible when necessary to avoid a natural or artificial hazard or obstruction, including, but not limited to a dam, deep hole or fence or other exercise of ownership by the riparian owner.

However, per the Michigan Penal Code Section 552c, a person is prohibited from intentionally and without authority or permission from entering in or upon premises or structures belonging to another person that is a "key facility" if that key facility is completely enclosed by a physical barrier of any kind. A key facility includes: a chemical manufacturing facility; a refinery; an electric utility facility; a water intake structure or water treatment facility; a natural gas facility; gasoline, propane, liquid natural gas, or other fuel terminal or storage facility; a transportation facility; a pulp or paper manufacturing facility; a pharmaceutical manufacturing facility; a hazardous waste storage, treatment or disposal facility; and a telecommunication facility.

Railroad Rights-Of-Way

Railroad rights-of-way are private property. Trespassing on railroad property, including the trestles and bridges, is a misdemeanor. Written permission must be obtained from the railroad company to be exempt from railway trespass.

Angler Harassment Information

Anglers in Michigan have the right to enjoy their sport free from unreasonable and deliberate interference. Michigan law prohibits individuals from obstructing or interfering with the lawful taking of aquatic species. The DNR supports fishing as a legitimate form of recreation and as a useful tool in the management of aquatic resources. Michigan Conservation Officers are committed to protecting anglers from the intentional disruption of the fishing experience. Individuals whose fishing is being obstructed should promptly report the violation to the DNR by calling a local conservation officer, the nearest DNR office, or call or text toll free at 800-292-7800 (Report All Poaching hotline).

Personal Flotation Devices (PFD)

When selecting a PFD, be sure to read the label to verify that it is appropriate for the person's size and weight. Try your PFD on to make sure it fits properly and check to make sure it is U.S. Coast Guard approved.

Craft under 16 feet long:

For Great Lakes and connecting waterways, the U.S. Coast Guard requires all vessels less than 16 feet to carry one wearable approved Type I, II or III PFD for each person on board. For inland waters not connected to the Great Lakes, each person on board must have either a wearable or throwable PFD.

Craft 16 feet or longer:

If your boat is 16 feet or longer, you must have on board at least one throwable PFD (Type IV), PLUS one of any of these wearable PFDs for each person on board:

- Offshore Life Jacket (Type I)
- Near-shore Bouyant Vest (Type II)
- Flotation Aid (Type III)

Michigan law requires:

- Everyone operating, riding on or being towed by a personal watercraft must wear a non-inflatable Type I, II or III PFD.
- Persons less than 6 years old must wear a Type I or Type II PFD when riding on the open deck area of a boat.

Learn more at: www.boat-ed.com/michigan/handbook/book.html

Public access to fishing is supported by the Natural Resources Trust Fund.



Visit Michigan.gov/dnr and click on "Grants" for more information.

Master Angler Awards

The Master Angler Patch is awarded to all entries meeting the established minimum length for Catch-and-Keep and Catch-and-Immediate-Release entries. Please note there is no longer a weight requirement for Catch-and-Keep entries. All fish must be taken by legal Michigan sportfishing methods, during the open season, and in Michigan waters **OPEN TO THE PUBLIC**. **Only one entry for fish species of the same size will be accepted.** DNR Fisheries Division reserves the right to reject any application if the entry does not meet the established criteria. Only 1 patch will be awarded for both Catch-and-Keep AND Catch-and-Immediate-Release entries. No more than 1 patch per species will be awarded to each angler per year.

- The Master Angler Certificate is awarded to anglers who catch one of the top 5 fish of each species in both the Catch-and-Keep and the Catch-and-Immediate-Release categories. Anglers catching a State Record fish also receive this award.
- Measuring the length of your fish: Measure your fish from the tip of the nose (or lower jaw) to tip of the tail in a straight line. Do NOT measure in a curve or over the body. Measure to the closest 1/8".
- Applications are available at all Customer Service Centers (see p. 65) and at **Michigan.gov/masterangler**. The deadline for submitting an entry is **Jan. 10, 2020**. **Color photos of the entire fish, including one photo of the fish being measured, must be submitted. Applications and photos may be submitted either all electronically or via the mail. Electronic applications and photos may be sent to masterangler@michigan.gov. Mailed applications and photos may be sent to:** Fisheries Division, Michigan Department of Natural Resources, PO Box 30446, Lansing, MI 48909.
- State Record fish** are recognized by weight only. To qualify, your fish must exceed the current listed State Record weight and identification must be verified by a DNR fisheries biologist. See the list of Customer Service Centers on p. 65.

When releasing a fish...

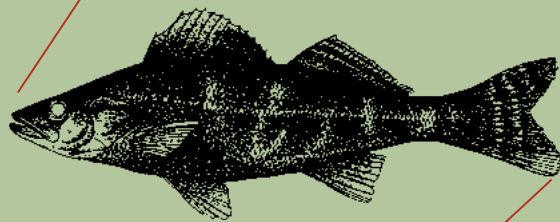
Please follow these suggestions to reduce the risk of injury to the fish when practicing catch-and-release:

- Never use a gaff.
- Land your catch carefully and quickly. Avoid handling the fish at all and remove the hook gently with pliers.
- Use a landing net made of soft or knotless mesh and always try to net your fish head first.
- Try to keep the fish in the water and gently cradle it while carefully removing the hook.
- Leave your fish in the water until you are ready to take a photo.
- Do not squeeze the fish and keep your fingers out of the fish's gills since a torn gill could cause the fish to bleed to death.
- Touch your fish as little as possible. Always wet your hands when touching your fish.
- Cut the line near the hook if a fish is deeply hooked. A steel hook will rust away leaving the fish unharmed.
- Release your fish, pointing it into a slow current or gently moving it back and forth until its gills are working properly and the fish regains its balance. Once fully recovered, allow the fish to swim from your hands (big fish may take longer to recover).

Length Measurement Directions

Measure fish from tip of nose (or lower jaw) to tip of tail in a straight line (DO NOT measure in a curve around the body from nose to tail). Measure to the closest 1/8th". Tail and jaw should be pinched to get proper measurement.

Pinch mouth closed



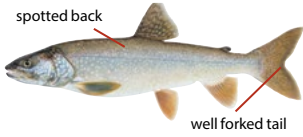
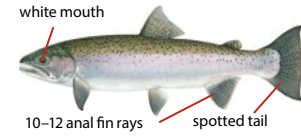
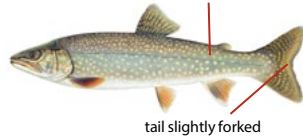
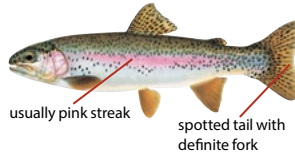
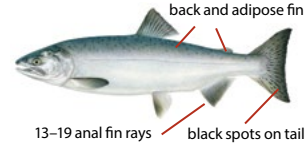
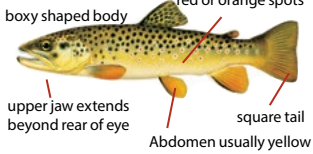
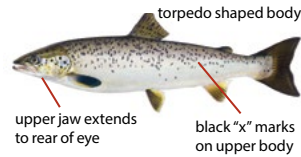
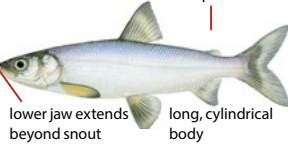
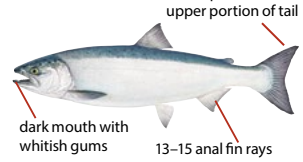
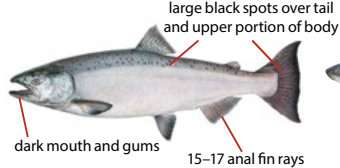
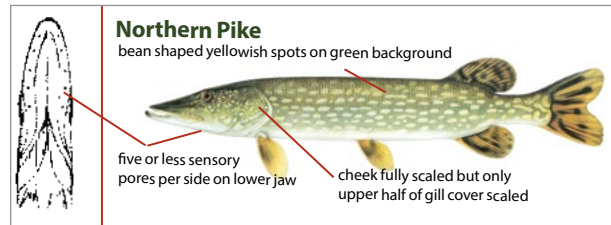
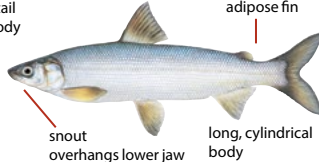
Pinch tail to form a point

Minimum Entry Lengths/Weights & Current State Records

Catch-and-Immediate-Release and Catch-and-Keep Entries must meet minimum length.

Species	Minimum Entry Length (inches)	Current State Record (lbs.-oz.)
Bass, Largemouth	22"	11-15
Bass, Rock	11.5"	3-10
Bass, Smallmouth	21"	9-15.7
Bass, White	16"	6-7
Bluegill	10"	2-12
Buffalo, Bigmouth	32"	27-0
Buffalo, Black	26"	46-8.6
Bullhead, Black	14"	3-7
Bullhead, Brown	14"	3-12.3
Bullhead, Yellow	14"	3-9.6
Bowfin	27"	14-0
Burbot	26"	18-4
Carp (Note 1)	30"	61-8* / 45-0**
Carp sucker, Quillback	19"	8-8
Catfish, Channel	29"	40-0
Catfish, Flathead	29"	52-0
Cisco (Lake Herring)	16"	6-5.8
Crappie, Black	14"	4-2
Crappie, White	14"	3-6
Freshwater Drum	25"	28-10
Gizzard Shad	16"	4-2
Lake Sturgeon	50"	193-0
Longnose Gar	32"	18-0
Muskellunge, Great Lakes	42"	58-0
Muskellunge, Northern	42"	49-12
Muskellunge, Tiger	42"	51-3
Northern Pike	40"	39-0
Perch, White	10"	2-0
Perch, Yellow	14"	3-12
Salmon, Atlantic	32"	32-10
Salmon, Chinook	39"	46-1
Salmon, Coho	31"	30-9
Salmon, Pink	21"	8-9
Smelt	10"	12"
Splake	25"	17-8
Sucker, Longnose	17"	6-14
Sucker, N. Hog	13"	2-8
Sucker, Redhorse	22"	12-14.2
Sucker, White	20"	7-3
Sunfish, Green	9"	1-8
Sunfish, Hybrid	10"	1-12.8
Sunfish, Pumpkinseed	9"	2-2.4
Sunfish, Redear	10"	2-5.8
Sunfish, Warmouth	9"	1-6
Trout, Brook	15"	9-8
Trout, Brown	32"	41-7.2
Trout, Lake	34"	61-8
Trout, Rainbow (Steelhead)	32"	26-8
Walleye	29"	17-3
Whitefish, Lake	23"	14-4.5
Whitefish, Menominee (Whitefish, Round)	15"	4-0

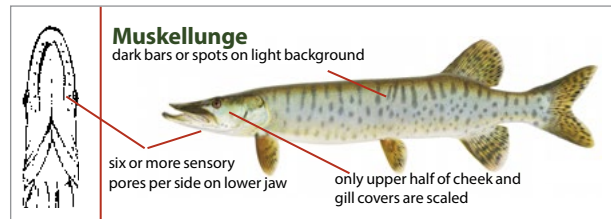
Note 1: *State record Carp; **Largest hook & line Carp

Lake Trout**Brook Trout****Rainbow Trout (Steelhead)****Splake****Rainbow Trout****Pink Salmon****Brown Trout****Atlantic Salmon****Cisco****Coho Salmon****Chinook "King" Salmon****Lake Whitefish****Northern Pike**

bean shaped yellowish spots on green background

five or less sensory pores per side on lower jaw

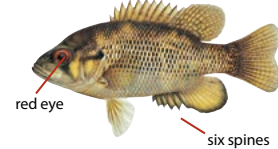
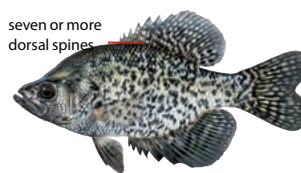
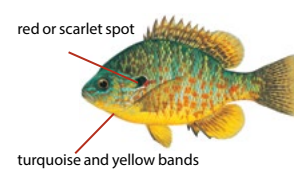
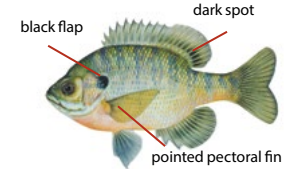
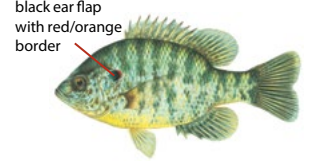
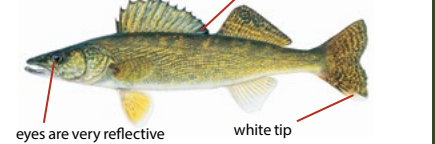
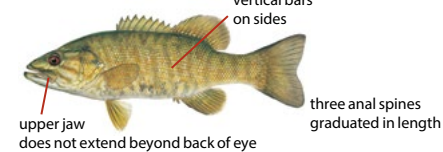
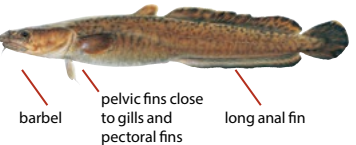
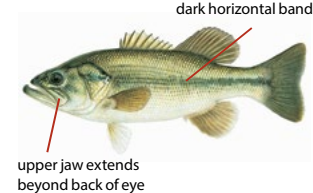
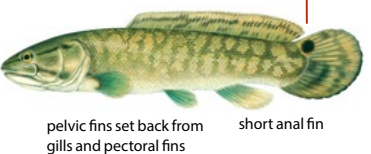
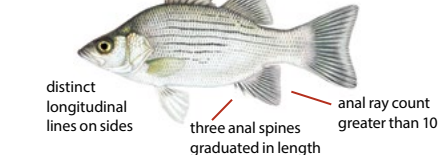
cheek fully scaled but only upper half of gill cover scaled

**Muskellunge**

dark bars or spots on light background

six or more sensory pores per side on lower jaw

only upper half of cheek and gill covers are scaled

Rock Bass**Black Crappie****Pumpkinseed (Sunfish)****Bluegill****Redear Sunfish****Yellow Perch****Walleye****Flathead Catfish****Channel Catfish****Smallmouth Bass****Burbot****Largemouth Bass****Bowfin****White Bass**

Identify even more Michigan fish online:
Michigan.gov/fishid

Inland Trout & Salmon Regulations

The information in this section (pp. 38-59) provides fishing regulations that pertain only to the taking of trout and salmon from inland waters. Check the county listings, arranged by county, on pp. 44-59 for specific waters and the regulations placed on each according to the Type listed for that entry. Regulations for lakes and streams are listed in either the lake regulations table (below), stream regulations table (p. 39), or the gear restricted streams section (pp. 40-42). **Maps have been developed to assist anglers in identifying inland trout waters and the regulations associated with each Type as indicated by color scheme and text. Maps are only available online at Michigan.gov/fishingguide. During closed season dates on inland trout and salmon waters, fishing is prohibited for all species.** Anglers should check the **It is Unlawful To** section for restrictions on hooks and lures (p. 11) and the **Exceptions to General Regulations by County** (pp. 28-32) for other restrictions.



Flies Only



Artificial Lures Only



Special Hook Restrictions

A person shall not at any time take, attempt to take, or possess an Arctic Grayling taken from any of the waters over which the state has jurisdiction.

Inland Trout & Salmon Lake Regulations

The following regulations pertain only to inland lake Types A - F as listed on pp. 44-59.

Maps are available online at: Michigan.gov/fishingguide

Lake Type	Fishing Season	Possession Season	Tackle	Daily Possession Limit	Brook Trout	Brown Trout, & Rainbow Trout, & Splake	Lake Trout	Coho, Chinook, & Pink Salmon	Atlantic Salmon
					Minimum Size Limit (inches)				
A	Last Sat. in April - Sep. 30	Last Sat. in April - Sep. 30	All except minnows	5/3*	10"	12"	15"	10"	15"
B	Open All Year	Open All Year	All	5/3*	10"	12"	15"	10"	15"
C	Open All Year	Open All Year	All	5/3*	8"	8"	8"	10"	15"
D	Last Sat. in April - Sep. 30	Last Sat. in April - Sep. 30	**	1	15"	15"	15"	10"	15"
E	Open All Year	Open All Year	All	3	15"	15"	15"	10"	15"
F	Open All Year	Open All Year	All	5/3^	10"	10"	10"	10"	10"

* 5 fish, with no more than 3 trout 15" or greater.

** On Type D lakes, it is unlawful to use or possess live bait, dead or preserved bait or organic or processed food on any of the waters or on shore.

^ 5 fish in any combination, but no more than 3 fish of any one species, except up to 5 salmon (Chinook or coho) may be retained.

Designated Trout Lakes:

All Type A and all Type D lakes are designated trout lakes (see p. 8).

Regulations for Lakes Not Classified as Lake Type:

Except for lakes in the Michigan-Wisconsin Boundary Waters and Sylvania Wilderness Area, any other inland lake not classified by Type is open all year to the taking of trout with an 8-inch minimum size limit and 5 fish daily possession limit, no more than 3 of which may be 15" or greater. Artificial lures and all types of natural bait may be used. See pp. 24-26 for Michigan-Wisconsin Boundary Waters and Sylvania Wilderness Area regulations, respectively.

Inland Trout & Salmon Stream Regulations

The following regulations pertain only to inland stream Types 1-4, Research Areas (RA), Brook Trout Restoration Areas (BTRA), and 10 Brook Trout Possession Limit Waters (10 BKT) as listed on pp. 44-59.

Maps are available online at: Michigan.gov/fishingguide.

All types of natural and artificial baits may be used on stream Types 1-4. NOTE: Chumming is prohibited on all stream types listed below and GR streams.			Minimum Size Limit (inches)		Daily Possession Limit
Stream Type (Colors below are indicated accordingly on the maps online.)	Fishing Season	Possession Season	Brook Trout	Brown Trout	Atlantic, Chinook, Coho & Pink Salmon, Lake Trout, Rainbow Trout (Steelhead), Splake
1 (Approx. 1,400 streams)	Last Sat. in April - Sep. 30	Last Sat. in April - Sep. 30	7"	8"	5 fish, but no more than 3 trout 15" or greater
2 (14 streams)	Last Sat. in April - Sep. 30	Last Sat. in April - Sep. 30	10"	12"	
3 (60 streams)	Open All Year	Open All Year	15"	15"	
4 (130 streams)	Open All Year	Last Sat. in April - Sep. 30 for Brook Trout, Brown Trout, and Atlantic Salmon Open all year for all other Trout and Salmon	7"	10"	
Brook Trout Restoration Areas (BTRA)	<p>The following locations have more restrictive brook trout regulations. Fishing regulations on these waters shall supersede those in other sections which in any way conflict with the following: the harvest season for Brook Trout is from the last Saturday in April - Sep. 30, the minimum size limit on Brook Trout, Lake Trout, and Splake shall be 20 inches with a daily possession limit of one (1) Brook Trout, Lake Trout or Splake total combined.</p> <ol style="list-style-type: none"> Big Garlic River and tributaries (Marquette Co.), from County Road 550 (T50N, R26W, S33) downstream to Lake Superior (T50N, R26W, S21). Big Huron River (Baraga and Marquette Cos.), from Big Eric's Bridge (T52N, R30W, S35) downstream to Lake Superior (T52N, R29W, S18). Iron River (Marquette Co.), from Lake Independence Dam (T51N, R27W, S13) downstream to Lake Superior (T51N, R26W, S18). Little Huron River (Marquette Co.), from unnamed bridge crossing located at the southern border of section 20 (T52N, R29W, S20) downstream to Lake Superior (T52N, R29W, S17). Pilgrim River (Houghton Co.), from Paradise Road (T54N, R33W, S7) downstream to mouth at Portage Lake (T54N, R33W, S5). Portage/Torch Lake system (including the Portage River, Portage Canal, North Entry and South Entry, Houghton Co.). Ravine River (Baraga Co.), from Sicoite Road (T51N, R31W, S2) downstream to Huron Bay (T51N, R31W, S4). Silver River (Baraga Co.), from Silver River Falls (T51N, R32W, S26) downstream to Huron Bay (T51N, R31W, S18). Slate River (Baraga Co.), from Slate River Falls (1/2 mile upstream from Skanee Road T51N, R31W, S9) downstream to Huron Bay (T51N, R31W, S8). 				
10 Brook Trout Possession Limit Waters (10 BKT)	A suite of waters allow for anglers to retain up to an additional 5 brook trout in their daily possession limit of trout. Please see the county listings for these waters. Type 1 regulations apply, EXCEPT 5 additional brook trout may be retained as part of daily possession limit.				
Research Areas (RA)	Research Areas: Salmon-Trout River (Marquette Co.) is under special regulations as indicated on p. 54. It is indicated on the online maps (Michigan.gov/fishingguide) with gray shading. Please see the county listing for specific regulations on this water.				

Designated Trout Streams:

All Type 1, all Type 2, all Gear Restricted Streams, all Research Areas (RA), and all Brook Trout Restoration Areas (BTRA) are designated trout streams. Most Type 3 and most Type 4 streams are designated trout streams (check the online maps for more information).

Regulations for Streams Not Classified as Stream Type or Listed as a Gear Restricted Stream

Except for streams in the Michigan-Wisconsin Boundary Waters, any other inland stream not classified by Type is open to trout fishing all year with an 8" minimum size limit (except 7" for brook trout) and a 5 fish daily possession limit, no more than 3 of which may be 15" or greater, except up to 5 salmon (Chinook or coho) 15" or greater may be retained in the daily possession limit on these waters. Artificial lures and all types of natural bait may be used. Please see pp. 24-25 for Michigan-Wisconsin Boundary Waters regulations.

Gear Restricted Streams



Flies Only



Artificial Lures Only

The following streams have regulations that differ from those in Types 1–4 as listed on p. 39. On all streams managed under gear restrictions, it shall be unlawful to use or possess live bait, dead or preserved bait or organic or processed food on any of the waters or on shore (this restriction does not apply when a stream is under Type regulations). **NOTE: It shall be unlawful to use or possess scented material on flies-only Gear Restricted Streams. Gear Restricted Streams are indicated in red color on the maps online at Michigan.gov/fishingguide.**

Au Sable River:

Mainstream (Crawford Co.) from Burton's Landing (T26N, R3W, S11) to South Wakeley Bridge Rd. (Wakeley Bridge): **Fishing Season:** open all year; **Tackle:** artificial flies only; **Possession Season:** closed all year; except for children under 12 the possession season is open all year; **Daily Possession Limit:** zero trout; except children under 12 may keep 1 trout; **Size Limits:** for children under 12 there is an 8-inch minimum size limit and a 12-inch maximum size limit for trout. **Mileage:** 9.0 miles.

Mainstream (Crawford Co.) from South Wakeley Bridge Rd. (Wakeley Bridge) to McMasters Bridge Rd. (McMasters Bridge): **Fishing Season:** open all year; **Possession Season:** last Sat. in April – Sep. 30 for brook trout and brown trout; open all year for rainbow trout; **Tackle:** artificial lures only; **Daily Possession Limit:** 2 trout with no more than 1 trout 18" or greater; **Size Limits:** minimum size limit: brook trout and rainbow trout — 10"; brown trout — 18". **Mileage:** 8.0 miles.

Mainstream (Oscoda Co.) from Mio power line (T26N, R3E, S7; 44° 39' 40.550" N/ 84° 7' 24.280" W) to Evans Rd. (McKinley Bridge): **Fishing Season:** open all year; **Possession Season:** last Sat. in April – Sep. 30 for brook trout and brown trout; open all year for rainbow trout; **Tackle:** artificial lures only; **Daily Possession Limit:** 2 trout with no more than 1 trout 18" or greater; **Size Limits:** minimum size limit: brook trout – 7"; brown trout – 18"; rainbow trout – 10". **Mileage:** 15.0 miles.

North Branch (Crawford Co.) from Sheep Ranch (T28N, R2W, S12; 44° 49' 40.470" N/ 84° 29' 25.933" W) to confluence with

Mainstream: Fishing Season: open all year; **Possession Season:** last Sat. in April – Sep. 30 for brook trout and brown trout; open all year for rainbow trout; **Tackle:** artificial flies only; **Daily Possession Limit:** 2 trout with no more than 1 trout 18" or greater; **Size Limits:** minimum size limit: brook trout and rainbow trout — 10"; brown trout — 18". **Mileage:** 20.7 miles

South Branch (Crawford Co.) from Chase Bridge Rd. (Chase Bridge) to Lower High Banks (T25N, R2W, S13; 44° 33' 49.735" N/ 84° 29' 59.107" W): **Fishing season:** open all year; **Possession Season:** closed all year; except for children under 12 the possession season is open all year; **Tackle:** artificial flies only; **Daily Possession Limit:** zero trout; except children under 12 may keep 1 trout; **Size Limits:** for children under 12 there is an 8-inch minimum size limit and a 12-inch maximum size limit for trout. **Mileage:** 4.3 miles.

South Branch (Crawford Co.) from Lower High Banks (T25N, R2W, S13; 44° 33' 49.735" N/ 84° 29' 59.107" W) to confluence with Mainstream: **Fishing Season:** open all year; **Possession Season:** last Sat. in April – Sep. 30 for brook trout and brown trout; open all year for rainbow trout; **Tackle:** artificial flies only; **Daily Possession Limit:** 2 trout with no more than 1 trout 18" or greater; **Size Limits:** minimum size limit: brook trout and rainbow trout — 10"; brown trout — 18". **Mileage:** 11.5 miles.

Black River:

(Otsego and Montmorency Cos.) from Tin Shanty Bridge Rd. to the Town Corner Lake Stairs (T32N, R1E, S31 SE/SE; 45° 6' 50.872" N/ 84° 21' 0.488" W): **Fishing Season:** open all year;

Possession Season: last Sat. in April – Sep. 30 for brook trout; open all year for brown trout and rainbow trout; **Tackle:** artificial lures only; **Daily Possession Limit:** 5 trout; with no more than 2 brook trout; **Size Limits:** minimum size limit: brook trout and rainbow trout — 10"; brown trout — 8". **Mileage:** 4.4 miles.

Cooks Run:

(Iron Co.) from US Forest Hwy 16 to confluence with South Branch Paint River:

- **From the last Sat. in April – Sep. 30,** this reach of stream shall be managed under Type 2 regulations, except the minimum size limit for brook trout is 7".

From Oct. 1 – the Fri. before the last Sat. in April, this reach of stream shall be managed under gear restricted regulations as follows: **Fishing Season:** Oct. 1 – the Fri. before the last Sat. in April; **Possession Season:** closed; except for children under 12 the possession season is open; **Tackle:** artificial flies only; **Daily Possession Limit:** zero trout; except children under 12 may keep 1 trout; **Size Limits:** for children under 12 there is an 8-inch minimum size limit and a 12-inch maximum size limit for all trout. **Mileage:** 4.5 miles.

Duck Creek:

(Gogebic Co.) from Railroad Bridge (T44N, R39W, S16) to confluence with Middle Branch Ontonagon River: **Fishing Season:** open all year; **Possession Season:** last Sat. in April – Sep. 30 for brook trout and brown trout; open all year for rainbow trout; **Tackle:** artificial lures only; **Daily Possession Limit:** 2 trout; **Size Limits:** minimum size limit: all trout – 10". **Mileage:** 6.5 miles.

Escanaba River:

(Delta Co.) from Boney Falls Dam to Mouth of Silver Creek: **Fishing Season:** open all year; **Possession Season:** last Sat. in April – Sep. 30 for brook trout and brown trout; open all year for rainbow trout; **Tackle:** artificial lures only; **Daily Possession Limit:** 2 trout; **Size Limits:** minimum size limit: brook trout — 10"; brown trout and rainbow trout — 12". **Mileage:** 14.2 miles.

Fox River:

(Schoolcraft Co.) from Fox River State Forest Campground (T46N, R14W, S11; 46° 24' 1.668" N/ 86° 1' 50.271" W) to M-28:

- **From the last Sat. in April – Sep. 30,** this reach of stream shall be managed under Type 1 regulations.

From Oct. 1 – the Fri. before the last Sat. in April, this reach of stream shall be managed under gear restricted regulations as follows: **Fishing Season:** Oct. 1 – the Fri. before the last Sat. in April;

Possession Season: closed; except for children under 12 the possession season is open; **Tackle:** artificial flies only; **Daily Possession Limit:** zero trout; except children under 12 may keep 1 trout; **Size Limits:** for children under 12 there is an 8-inch minimum size limit and a 12-inch maximum size limit for all trout. **Mileage:** 7.6 miles.

Huron River:

(Oakland Co.) from the Sign below Moss Lake Outlet to the Signs 100 Yards below Wixom Road:

- **From the last Sat. in April – Sep. 30,** this reach of stream shall be managed under Type 1 regulations.

From April 1 – the Fri. before the last Sat. in April, this reach of stream shall be managed under gear restricted regulations as follows: **Fishing season:** April 1 – the Fri. before the last Sat. in April; **Possession Season:** closed; except for children under 12 the possession season is open; **Tackle:** artificial flies only; **Daily Possession Limit:** zero trout; except children under 12 may keep 1 trout; **Size Limits:** for children under 12 there is an 8-inch minimum size limit and a 12-inch maximum size limit for all trout. **Mileage:** 2.0 miles.

Little Manistee River:

(Lake Co.) from North Peacock Trail (Spencer's) to Johnson Rd. (Johnson's Bridge): **Fishing Season:** April 1 – Dec. 31; **Possession Season:** last Sat. in April – Sep. 30 for brook trout and brown trout; open April 1 – Dec. 31 for all other trout and salmon; **Tackle:** artificial flies only; **Daily Possession Limit:** 2 fish, any combination of trout and salmon; **Size Limits:** minimum size limit: brown trout — 15"; all other trout and salmon — 10". **Mileage:** 7.5 miles.

Manistee River:

(Crawford Co.) from CO. Rd. 612 to M-72: **Fishing Season:** open all year; **Possession Season:** last Sat. in April – Sep. 30 for brook trout and brown trout; open all year for rainbow trout; **Tackle:** artificial lures only (see p. 8); **Daily Possession Limit:** 2 trout; with no more than 1 trout 18" or greater; **Size Limits:** minimum size limit: brook trout and rainbow trout — 10"; brown trout — 18". **Mileage:** 9.2 miles.

(Crawford and Kalkaska Cos.) from M-72 to Sunset Trail Rd. (CCC Bridge): **Fishing Season:** open all year; **Possession Season:** last Sat. in April – Sep. 30 for brook trout and brown trout; open all year for rainbow trout; **Tackle:** artificial flies only; **Daily Possession Limit:** 2 trout; with no more than 1 trout 18" or greater; **Size Limits:** minimum size limit: brook trout and rainbow trout — 10"; brown trout — 18". **Mileage:** 16.7 miles.

Paint Creek:

(Oakland Co.) from Gunn Rd. to Tienken

Rd.: Fishing Season: last Sat. in April – Sep. 30 for all trout; **Possession Season:** last Sat. in April – Sep. 30 for all trout; **Tackle:** artificial lures only; **Daily Possession Limit:** 2 trout; **Size Limits:** minimum size limit: all trout — 14". **Mileage:** 5.0 miles.

Paint River:

South Branch (Iron Co.) from the Mouth of Cooks Run to the Mouth of the North Branch of the Paint River:

- **From the last Sat. in April – Sep. 30,** this reach of stream shall be managed under Type 2 regulations, except the minimum size limit for brook trout is 7".

• **From Oct. 1 – the Fri. before the last Sat. in April,** this reach of stream shall be managed under gear restricted regulations as follows: **Fishing Season:** Oct. 1 – the Fri. before the last Sat. in April; **Possession Season:** closed; except for children under 12 the possession season is open; **Tackle:** artificial flies only; **Daily Possession Limit:** zero trout; except children under 12 may keep 1 trout; **Size Limits:** for children under 12 there is an 8-inch minimum size limit and a 12-inch maximum size limit for all trout. **Mileage:** 10.0 miles.

Pere Marquette River:

• **(Lake Co.) from M-37 to the Downstream Edge of the Boat Ramp/Slide at Gleason's Landing (T17N, R14W, S13; 43° 52' 14.521" N/ 85° 55' 21.752" W):** **Fishing Season:** open all year; **Possession Season:** closed all year; except for children under 12 the possession season is open all year; **Tackle:** artificial flies only; **Daily Possession Limit:** zero trout and salmon; except children under 12 may keep 1 trout or salmon; **Size Limits:** for children under 12 there is an 8-inch minimum size limit and a 12-inch maximum size limit for all trout and salmon. **Mileage:** 8.5 miles.

(Lake Co.) from the Downstream Edge of the Boat Ramp/Slide at Gleason's Landing (T17N, R14W, S13; 43° 52' 14.521" N/ 85° 55' 21.752" W) to the Upstream Edge of the Boat Ramp at Rainbow Rapids (T18N, R14W, S27; 43° 55' 5.321" N/ 85° 58' 30.719" W):

- **From Sep. 1 – the Fri. before the last Sat. in April,** this reach of stream shall be managed under Type 4 regulations, with the following exceptions: **Fishing Season:** Sep. 1 – the Fri. before the last Sat. in April; **Possession Season:** Sep. 1 – the Fri. before the last Sat. in April; **Daily Possession Limit:** 1 rainbow trout; **Size Limits:** rainbow trout — 10".

• **From the last Sat. in April – Aug. 31,** this reach of stream shall be managed under gear restricted regulations as follows: **Fishing Season:** last Sat. in April – Aug. 31; **Possession Season:** last Sat. in April – Aug. 31; **Tackle:** artificial lures only (see p. 8); **Daily Possession Limit:** 2 trout or salmon; with no more than 1 brown trout 18" or greater, and no more than 1 rainbow trout; **Size Limits:** minimum size limit: all salmon — 10"; brook trout, brown trout, and rainbow trout — 8"; except that the harvest of fish greater than 14" and less than 18" shall be prohibited for brook trout, brown trout, and rainbow trout. **Mileage:** 10.5 miles.

Pigeon River:

• **(Cheboygan and Otsego Cos.) from Elk Hill Campground Horse Trail (T32N, R1W, S10; 45° 10' 50.753" N/ 84° 25' 27.866" W) to Pine Grove Campground Stairs (T33N, R1W, S17; 45° 14' 38.497" N/ 84° 26' 47.983" W):** **Fishing Season:** open all year; **Possession Season:** last Sat. in April – Sep. 30 for brook trout and brown trout; open all year for rainbow trout; **Tackle:** artificial lures only; **Daily Possession Limit:** 2 trout; with no more than 1 brown trout; **Size Limits:** minimum size limit: brook trout and rainbow trout — 10"; brown trout — 12". **Mileage:** 5.3 miles.

Working to bring Arctic Grayling back to Michigan

The Michigan Arctic Grayling Initiative is working to create self-sustaining populations of this unique and historical fish species in the Great Lakes state! If you'd like to learn more about the goals of the initiative and how you can get involved, visit Migrayling.org.



Illustration by Joseph R. Tomelleri ©



Dunham's

SPORTS®

20% OFF*

Regular Price Of Any One Item In Stock With Coupon

*Exclusions may be mandated by the manufacturers. Excludes: Firearms, ammunition, licenses, select Asics, Nike, Perception, & TaylorMade product. ENO hammocks, GoPro, Lego, Merrell footwear, Nerf, Oakley, Ray-Ban, Spyder, TenPoint, Terrain Blinds, Under Armour, Yeti, Columbia, Garmin, tennis balls, Nike practice golf balls (single & bulk), Titleist balls, bats over \$149.99, KL Pro 120 boat/trailer, augers, shanties, bulk deer corn, GPS/fish finders, motors, marine batteries, motorized vehicles, gift cards. Not valid for online purchases. Cannot be used with another offer, coupon, current sale or clearance item. Only one coupon per item. One coupon per customer. Not valid on previous purchases. Void if copied. Not for resale.

Coupon Expires March 31, 2020



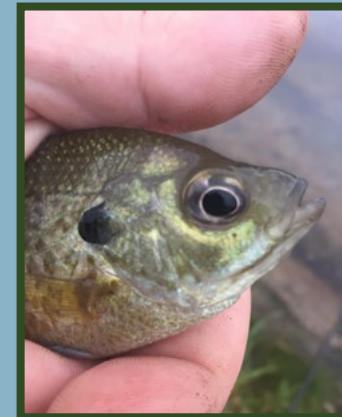
2553600000000

Stay on top of the latest news from the Michigan DNR!

Visit us at Michigan.gov/dnr & click on the red envelope to sign up for email updates!



And follow us on Twitter @MDNR_Fisheries



Stocking Public Waters

Find out if any fish have been stocked in your favorite spot at michigandnr.com/fishstock.



Trout Trails

Michigan is nationally known as a trout fishing destination with nearly 20,000 miles of cold, quality trout streams and hundreds of trout lakes accessible to anglers. But how do you decide where to go? Visit Michigan's Trout Trails – Michigan.gov/trouttrails – for a detailed list of biologist-verified trout waters that are perfect for your next trip!




County Listing of Lakes and Streams

Below is a listing of the inland lakes and streams that are managed for trout and salmon, along with their respective regulation Type. Please see pp. 38-39 for detailed regulations for each Type. For inland lakes, the lake name will appear under the appropriate county and will be followed by a letter (A-F). The letter designates the Type of regulations that apply to that lake. For streams, the stream name will be followed by a number (2-4, GR for Gear Restricted Streams, RA for Research Area, BTRA for Brook Trout Restoration Area, or 10 BKT for waters where up to 10 brook trout may be retained, see p. 39) and any upstream/downstream boundaries that apply to that section of stream. **Type 1 streams are not listed in the text.** For a complete listing of all trout streams, check online or contact any DNR Fisheries Office. An SC indicates a fishing closure for the area and time period mentioned. **Maps are available online at Michigan.gov/fishingguide.**

Alcona	
Lakes	Type
Reid Lake	B
South Hoist Lake	B
Streams	Type
Au Sable River Mainstream from Evans Rd. (McKinley Bridge) downstream to 4001 Bridge.	2
Au Sable River Mainstream from Alcona Dam to S. Br. River.	4
Black River from confluence with N. Br. Black River downstream to Lake Huron.	4
Pine River from F-41 downstream to Lake Huron.	3
Alger	
Lakes	Type
Ackerman Lake	B
Addis Lakes	A
Bette's Pond	A
Brian's Pond	A
Cheryl's Pond (T44N, R19W, S25)	B
Cox Pond	A
Grand Marais Lake	A
Grand Sable Lake	E
Hike Lake	A
Irwin Lake	A
Johns Lake West	A
Kay's Pond	B
Mirror Lake	B
North (Upper) Shoe Lake	B
Rock River Pond	A
Rock Lake	A
Sawaski Pond (T44N, R19W, S14)	B
Sitka Lake	A
Sullivan Lake	A
Trueman Lake	A

Streams	Type
Anna River from Railroad Bridge (T46N, R19W, S14) downstream to L. Superior.	4
Au Train River from Powerhouse below M-94 downstream to L. Superior.	4
Hurricane River downstream to L. Superior.	4
Laughing Whitefish River from Forks (T47N, R22W, S22) downstream to L. Superior.	4
Miner's River from Miner's Falls downstream to L. Superior.	4
Rock River from Railroad Bridge (T47N, R21W, S22) downstream to L. Superior. SC - Closed to Fishing - April 1 - Jun. 30 between dam and its downstream-most foot bridge located downstream from M-28 in T47N, R21W, S15.	4
Sable Creek	4
Sucker River upstream limit is old Grand Marais/Seney Road Bridge.	4
Sucker River and all tributaries upstream of Old Seney Road (CR 781). Type 1 regulations apply, EXCEPT 5 additional brook trout may be retained as part of daily possession limit.	10 BKT
Allegan	
Lakes	Type
Kalamazoo Lake/Silver Lake from US-31 down to L. Michigan.	F
Streams	Type
Black River Mainstream from confluence of N. and S. branches down to L. Michigan.	3
Gun River Mainstream from 122nd Ave. (T2N, R11W, S12) downstream to US 131 Bridge (T1N, R11W, S18).	4

Kalamazoo River from Calkins Dam (T2N, R14W, S15) downstream to US-31.	3
Middle Branch Black River from confluence of Spring Brook Creek (T1N, R15W, S22) downstream to confluence of Main Br. Black River.	4
North Branch Black River from 111th Ave. (T1N, R16W, S3) downstream to confluence with Mainstream.	3
Pine Creek Tributary from 101st Ave. to confluence with Pine Creek (T1N, R12W, S33).	4
Rabbit River Mainstream from US-131 Bridge (T4N, R11W, S31) downstream to confluence with Kalamazoo River (T3N, R15W, S16).	4
Silver Creek from M-89 Bridge (T1N, R11W, S26) downstream to confluence with Kalamazoo River.	2
Swan Creek from 109th Ave. (T1N, R14W, S7) downstream to confluence with Kalamazoo River (T2N, R14W, S9).  On the Swan River from mouth upstream to the dam at 118th Ave. it shall be unlawful to use other than one single- pointed unweighted hook measuring 1/2" or less from point to shank.	4
Alpena	
Streams	Type
Devils River from US-23 Bridge downstream to L. Huron.	4
Long Lake Creek downstream limit is L. Huron.	4
Thunder Bay River from Ninth Street Dam downstream to L. Huron.	3
Antrim	
Lakes	Type
Bellaire Pond	C
Elk Lake	E
Green Lake	B
Torch Lake	E
Streams	Type
Elk River from Power Dam below Elk Lake downstream to L. Michigan.	3
Elk River Bypass from Bypass Dam downstream to L. Michigan.	4
Grass River (inc. Clam River) from Lake Bellaire downstream to Torch Lake.	4

Intermediate River from Intermediate Dam downstream to Lake Bellaire.	4
SC - Closed to Fishing - April 1 - May 14 Bellaire Dam to Highway M-88 Bridge.	
Jordan River from Graves Crossing (T31N, R6W, S32) downstream to Lake Charlevoix.	4
Manistee River from headwaters downstream to CO. Rd. 612.	2
Torch River from Torch Lake downstream to Lake Skegemog.	4
Arenac	
Streams	Type
East Branch Au Gres River (Whitney Drain) from M-55 downstream to Saginaw Bay.	3
Rifle River from Sage Lake Road (T23N, R3E, S22) downstream to Saginaw Bay.	3
Baraga	
Lakes	Type
Lake Alice	D
Roland Lake	B
Streams	Type
Big Huron River from Big Eric's Bridge (T52N, R30W, S35) downstream to L. Superior (T52N, R29W, S18).	4 BTRA
East Branch Fence River upstream from North Fence Line River Road. Type 1 regulations apply, EXCEPT 5 additional brook trout may be retained as part of daily possession limit.	10 BKT
Falls River from US-41 to L. Superior.	3
Falls River from Blackjack Road (Golf Course Road) upstream to confluence with Ogema Creek and Burns Creek. Type 1 regulations apply, EXCEPT 5 additional brook trout may be retained as part of daily possession limit.	10 BKT
Otter River from confluence of N. and W. Br. Otter River downstream to Sturgeon River.	3
Ravine River from Sicutte Road (T51N, R31W, S2) downstream to Huron Bay (T51N, R31W, S4).	4 BTRA
Sidnaw Creek and all tributaries upstream from confluence with Sturgeon River. Type 1 regulations apply, EXCEPT 5 additional brook trout may be retained as part of daily possession limit.	10 BKT

Silver River from Silver River Falls (T51N, R32W, S26) downstream to Huron Bay (T51N, R31W, S18).	4 BTRA
Silver River and all tributaries upstream from Upper Silver Falls (northeast of Herman). Type 1 regulations apply, EXCEPT 5 additional brook trout may be retained as part of daily possession limit.	10 BKT
Slate River from Slate River Falls (1/2 mile upstream from Skanee Road T51N, R31W, S9) downstream to Huron Bay (T51N, R31W, S8).	4 BTRA
Sturgeon River from US-41 downstream to Prickett Dam.	2
Sturgeon River from Prickett Dam downstream to L. Superior. SC - Closed to Fishing - April 1 - Jun. 30 from the Prickett Dam downstream to mouth of Clear Creek (T50N, R35W, S12).	3
Sturgeon River upstream from highway Nestoria/Herman Road. Type 1 regulations apply, EXCEPT 5 additional brook trout may be retained as part of daily possession limit.	10 BKT
West Branch Huron River upstream from confluence with Robarge Creek. Type 1 regulations apply, EXCEPT 5 additional brook trout may be retained as part of daily possession limit.	10 BKT
Barry	
Lakes	Type
Deep Lake	B
Gull Lake	E
Streams	Type
Bassett Creek from Baker Lake downstream to confluence with Thornapple River.	4
Cedar Creek from sources downstream to M-37 (T2N, R8W, S9).	4
Coldwater River from M-43 Bridge (T4N, R8W, S16) downstream to Freeport Road Bridge.	2
Coldwater River from Freeport Rd. downstream to confluence with Thornapple River.	4
Turner Creek from (T3N, R10W, S23) downstream to confluence with Baker Creek (T3N, R10W, S9).	4
Unnamed Tributary on North Bank of Coldwater River (T4N, R7W, S18).	2
Bay	
Streams	Type
Saginaw River	3


Benzie	
Lakes	Type
Betsie Lake from M-22 down to L. Michigan.	F
Crystal Lake	E
Streams	Type
Betsie River from Kurick Rd. downstream to M-22. SC - Closed to Fishing - year-round within 100 feet of the lamprey barrier and fish passage facility at T25N, R15W, S2. On the Betsie River, Benzie Co., it shall be unlawful to use other than one single-pointed unweighted hook measuring 1/2" or less from point to shank.	4
Otter Creek from Otter Lake outlet (T27N, R15W, S13) downstream to L. Michigan.	4
Platte River from US-31 bridge at Veteran's Park downstream to L. Michigan. NOTE: The daily possession limit shall be 1 rainbow trout from Upper Hatchery Weir to L. Michigan. On the Platte River, Benzie Co., it shall be unlawful to use other than one single-pointed unweighted hook measuring 1/2" or less from point to shank. SC - Closed to Fishing - within 300 ft. of the upper (hatchery) weir infrastructure whenever weir is in place. SC - Closed to Fishing - whenever weir is in place within 300 ft. of the lower weir. SC - Closed to Fishing - Jan. 1 - March 31 from US-31 bridge at Veteran's Park downstream to Platte Lake.	4
Berrien	
Lakes	Type
Singer Lake	C
Streams	Type
Blue Creek	4
Dowagiac River from Niles Dam at Pucker Street (T7S, R17W, S13) downstream to confluence with St. Joseph River.	4
Galien River Mainstream downstream limit is L. Michigan.	4
South Branch Galien River Mainstream only , downstream limit is the confluence with Galien River.	4
St. Joseph River from Indiana state line downstream to L. Michigan.	3
Townsend Cr. (T6S, R17W, S19), and the mouth area of Lake Chapin, to a point 100 yards below the Townsend Cr. mouth into Lake Chapin, it is unlawful to use other than one single-pointed, unweighted hook measuring 1/2" or less from point to shank.	1

Branch	
Lakes	Type
Cary Lake	C
Lake Lavine	C
Streams	Type
Prairie River Mainstream from Bowers Road (T8S, R7W, S4) downstream to McKale Road (T7S, R9W, S8).	4
Calhoun	
Streams	Type
South Branch Rice Creek from Concord Rd. downstream to confluence with Kalamazoo River.	4
Nottawa Creek	4
Cass	
Lakes	Type
Birch Lake	B
Harwood Lake	C
Hemlock Lake	B
Streams	Type
Dowagiac Creek from McKenzie Street (T5S, R14W, S31) downstream to M-62.	2
Dowagiac Drain	4
Dowagiac River Mainstream (including Dowagiac Drain) from source downstream to Pucker Street (T7S, R17W, S13).	4
Charlevoix	
Lakes	Type
Lake Charlevoix	E
Thumb (Louise) Lake	B
Walloon Lake	B
Streams	Type
Bear River from Walloon Lake downstream to L. Michigan. On the Bear River, from the mouth upstream to Lake Street Dam (T34N, R5W, S6) it shall be unlawful to use other than one single-pointed unweighted hook measuring 1/2" or less from point to shank.	4
Boyne River from P. H. Dam downstream to Lake Charlevoix. On the Boyne River, from the mouth upstream to dam (T32N, R5W, S5) it shall be unlawful to use other than one single-pointed unweighted hook measuring 1/2" or less from point to shank.	4

Jordan River from Graves Crossing (T31N, R6W, S32) downstream to Lake Charlevoix.	4
Medusa Creek SC - Closed to Fishing - whenever weir is in place. Tributary to L. Michigan (T34N, R8W, S28) and including an area of L. Michigan in a radius of 100 feet from the mouth of Medusa Creek.	
Cheboygan	
Lakes	Type
Hemlock Lake	D
Silver Lake	B
Twin Lake #1	B
Tower Pond (from dam to M-68)	E
Weber Lake	B
Streams	Type
Cheboygan River from Cheboygan Dam downstream to L. Huron.	3
Maple River from Woodland Rd. in Emmet Co. downstream to mouth.	4
Mill Creek	4
Pigeon River from Elk Hill Campground Horse Trail to Pine Grove Campground Stairs.	GR
Pigeon River from Pine Grove Campground Stairs (T33N, R1W, S17) to East Mullet Rd.	4
Sturgeon River from Afton Rd. (Also called Webb Rd. or Wolverine Rd.) downstream to mouth at Burt Lake.	4
Chippewa	
Lakes	Type
Dukes Lake	B
Highbanks Lake	A
Naomikong Lake	A
Naomikong Pond	A
Streams	Type
Albany Creek from bridge below lamprey weir to L. Huron.	4
Carp River, Mainstream	4
Halfaday Creek from Lakeshore Drive downstream to L. Superior.	4
North Branch Pine River and all tributaries upstream from H-40 (in Rudyard). Type 1 regulations apply, EXCEPT 5 additional brook trout may be retained as part of daily possession limit.	10 BKT

Pendill's Creek from Second Dam (T47N, R4W, S28) downstream to L. Superior.	4
Pine River from H-40 Bridge downstream to L. Huron.	4
Crawford	
Lakes	Type
Bright Lake	A
Kneff Lake	A
Shupac Lake	A
Streams	Type
Au Sable River Mainstream from Business Loop 75 (James St.) downstream to Burton's Landing (T26N, R3W, S11).	2
Au Sable River Mainstream from Burton's Landing downstream to South Wakeley Bridge Rd. (Wakeley Bridge).	GR
Au Sable River Mainstream from South Wakeley Bridge Rd. (Wakeley Bridge) to McMasters Bridge Rd. (McMasters Bridge).	GR
Au Sable River Mainstream from McMasters Bridge Rd. (McMasters Bridge) downstream to Rainbow Bend power line (T26N, R2E, S4).	4
Manistee River from headwaters downstream to CO. Rd. 612.	2
Manistee River from CO. Rd. 612 to M-72.	GR
Manistee River from M-72 downstream to Sunset Trail Rd. (CCC Bridge T26N, R6W, S26).	GR
North Branch Au Sable River from Sheep Ranch downstream to confluence with Mainstream.	GR
South Branch Au Sable River from Chase Bridge Rd. (Chase Bridge) to Lower High Banks.	GR
South Branch Au Sable River from Lower High Banks downstream to confluence with Mainstream.	GR
Delta	
Lakes	Type
Bear Lake	A
Carr Lake	A
Carr Ponds	A
Kilpecker Pond	A
Norway Lake	A
Wintergreen Lake	A
Zigmaul Pond	A

Streams	Type
Bark River from 9 Road (Section Line Between T38N, R24W, S20 & 29) downstream to L. Michigan.	4
Big Fishdam River from County Road 2222 Bridge (T41N, R18W, S9) downstream to L. Michigan.	4
Days River from Highway M-35 Bridge downstream to L. Michigan.	4
Escanaba River from Boney Falls Dam downstream to mouth of Silver Creek (T40N, R23W, S11).	GR
Fishdam River and all tributaries upstream from County Road 2222 Bridge. Type 1 regulations apply, EXCEPT 5 additional brook trout may be retained as part of daily possession limit.	10 BKT
Ford River from Northland Truck Trail (T43N, R27W, S35) downstream to L. Michigan.	4
Haymeadow Creek and all tributaries upstream from Whitefish R. Type 1 regulations apply, EXCEPT 5 additional brook trout may be retained as part of daily possession limit.	10 BKT
Rapid River from County Road S-15 (T42N, R21W, S19) downstream to L. Michigan.	4
Sturgeon River from County Road 442 Bridge (T42N, R20W, S13) downstream to L. Michigan.	4
Tacoosh River from 29th Lane (County Road G-24) downstream to L. Michigan.	4
Whitefish River from 38th Road (U.S.F.S. 2236) downstream to US-2 bridge in T41N, R21W, S28.	4
Dickinson	
Streams	Type
East Branch Sturgeon River and all tributaries upstream from Leeman Road. Type 1 regulations apply, EXCEPT 5 additional brook trout may be retained as part of daily possession limit.	10 BKT
Fern Creek and all tributaries upstream from Pine Creek Lake Road. Type 1 regulations apply, EXCEPT 5 additional brook trout may be retained as part of daily possession limit.	10 BKT
Ford River from Northland Truck Trail (T43N, R27W, S35) downstream to L. Michigan.	4

Eaton	
Streams	Type
Sebewa Creek and Tributaries	4
Emmet	
Lakes	Type
Walloon Lake	B
Streams	Type
Bear River from Walloon Lake downstream to L. Michigan.  On the Bear River, from the mouth upstream to Lake Street Dam (T34N, R5W, S6) it shall be unlawful to use other than one single-pointed unweighted hook measuring 1/2" or less from point to shank.	4
Carp Lake River from Bridge in (T39N, R4W, S32) downstream to L. Michigan.	3
Maple River from Woodland Rd. , Emmet Co. downstream to mouth.	4
Gogebic	
Lakes	Type
Beatons Lake	B
Castle Lake	A
Cornelia Lake	A
Finger Lake	B
Imp Lake	B
Little Duck Lake	B
Mishike Lake	A
Moon Lake	B
Redboat Lake	D
Streams	Type
Big Carp River from a point 100 yards downstream of Bathtub Falls (T50N, R45W, S1) to L. Superior.	3
Black River from Rainbow Falls (T49N, R46W, S10) downstream to L. Superior.	3
Black River from US-2 downstream to Rainbow Falls.	2
Black River upstream of South Black River Road, excluding McDonald Creek. See p. 39.	10 BKT
Bluff Creek and all tributaries upstream from Choate Road. See p. 39.	10 BKT
Duck Creek from Railroad Bridge (T44N, R39W, S16) to confluence with Middle Branch Ontonagon River.	GR

Little Carp River from Traders Fall (T50N, R45W, S2) downstream to L. Superior.	3
Little Presque Isle River and all tributaries upstream from confluence with mainstream Presque Isle River. See p. 39.	10 BKT
Maple Creek from Bridge in (T49N, R46W, S18) downstream to L. Superior.	3
Middle Branch Ontonagon River downstream limit is Agate Falls.	2
Omans Creek from County Road 505 downstream to L. Superior.	3
Powdermill Creek and all tributaries upstream from Highway US-2. See p. 39.	10 BKT
Presque Isle River from Manabesho Falls to L. Superior.	3
Tamarack River from confluence with M. Br. Ontonagon River at Federal Forest Road 4500. Type 1 regulations apply, EXCEPT 5 additional brook trout may be retained as part of daily possession limit.	10 BKT
Grand Traverse	
Lakes	Type
Duck Lake	B
Elk Lake	E
Green Lake	B
Sand Lake #1	C
Streams	Type
Boardman River from Beitner Rd. downstream to L. Michigan. SC - Closed to Fishing - Whenever weir is in place within 300 feet upstream or downstream of weir in Traverse City.	4
Hillsdale	
Lakes	Type
Bear Lake	C
Bird Lake	C
Houghton	
Portage/Torch Lake system (including the Portage River, Portage Canal, North Entry and South Entry).	BTRA
Lakes	Type
Clear Lake	D
Emily Lake	B
Lake On Three	B
Penegor Lake	A

Perrault Lake	D
Streams	Type
Big Traverse River upstream limit is Gay-Lake Linden Road.	3
Deer Creek upstream from confluence with Graveraet River. Type 1 regulations apply, EXCEPT 5 additional brook trout may be retained as part of daily possession limit.	10 BKT
East Branch Ontonagon River upstream limit is Hwy. M-28.	3
East Branch Ontonagon River upstream from confluence with Glitter Creek near Lower Dam Road crossing. Type 1 regulations apply, EXCEPT 5 additional brook trout may be retained as part of daily possession limit.	10 BKT
Elm River from Road Bridge between (T53N, R36W, S3 & 10) downstream to L. Superior.	4
Graveraet River from mouth of Deer Creek (T54N, R36W, S2) downstream to L. Superior.	4
Little Elm River from Agate Beach Road (T53N, R36W, S6) downstream to L. Superior.	4
Otter River from confluence of N. and W. Br. Otter River downstream to Sturgeon River.	3
Pilgrim River upstream limit is Hwy US-41.	3 BTRA
Pilgrim River from Paradise Road (T54N, R33W, S5) downstream to mouth at Portage Lake (T54N, R33W, S7).	BTRA
Salmon Trout River from Redridge Dam downstream to L. Superior.	3
Sante River and all tributaries upstream from N. Br. Otter River. Type 1 regulations apply, EXCEPT 5 additional brook trout may be retained as part of daily possession limit.	10 BKT
Sidnaw Creek and all tributaries upstream from confluence with Sturgeon River. Type 1 regulations apply, EXCEPT 5 additional brook trout may be retained as part of daily possession limit.	10 BKT
South Branch Elm River from bridge (T54N, R36W, S29 & S32) downstream to L. Superior.	4
Sturgeon River from US-41 downstream to Prickett Dam.	2

Sturgeon River from Prickett Dam downstream to L. Superior. SC - Closed to Fishing - April 1 - June 30 from the Prickett Dam downstream to mouth of Clear Creek (T50N, R35W, S12).	3
Trap Rock River upstream limit is Cemetery Road (T56N, R32W, S29).	4
Huron	
Streams	Type
Bird Creek	3
Pigeon River	3
Pinnebog River	3
Ionia	
Streams	Type
Fish Creek from Sidney Rd. (T10N, R6W, S20) downstream to confluence with Maple River.	4
Prairie Creek	4
Sebewa Creek and Tributaries	4

Iosco	
Streams	Type
Au Sable River Mainstream from Foote Dam downstream to L. Huron. SC - Closed to Fishing - Year-round, the portion below the Foote Dam including the apron to 175 feet downstream from the dam.	3
Au Sable River Mainstream Alcona Dam to S. Br. River.	4
East Branch Au Gres River (Whitney Drain) from M-55 downstream to Saginaw Bay SC - Closed to Fishing - Dec. 1 - Friday before last Saturday in April between DNR lamprey weir and Legget Road (T21N, R6E, S10).	3
Tawas River	3
Van Etten Creek from Van Etten Lake downstream to mouth.	3

Iron	
Lakes	Type
Chicagon Lake	B
Deadman's Lake	A
Ellen Lake	B
Forest Lake	D
Fortune Pond	A
Golden Lake	B
Killdeer Lake	A
Long Lake	B
Madelyn Lake	A

Lake Ottawa	B
Skyline Lake	A
Spree Lake	A
Timber Lake	D
Streams	Type
Cooks Run from US Forest Hwy 16 to confluence with S. Br. Paint River (T44N, R36W, S28).	GR
Deer River and all tributaries upstream from Bradley Road. Type 1 regulations apply, EXCEPT 5 additional brook trout may be retained as part of daily possession limit.	10 BKT
East Branch Fence River upstream from North Fence Line River Road. Type 1 regulations apply, EXCEPT 5 additional brook trout may be retained as part of daily possession limit.	10 BKT
East Branch Ontonagon River upstream from confluence with Glitter Creek near Lower Dam Road crossing. Type 1 regulations apply, EXCEPT 5 additional brook trout may be retained as part of daily possession limit.	10 BKT
Margeson Creek and tributaries upstream from Noyes Road. Type 1 regulations apply, EXCEPT 5 additional brook trout may be retained as part of daily possession limit.	10 BKT
Paint River, South Branch from the Mouth of Cooks Run (T44N, R36W, S28) to the Mouth of the N. Br. of the Paint River (T44N, R35W, S8).	GR
Tamarack River from confluence with Main Br. Ontonagon River at Federal Forest Road 4500. Type 1 regulations apply, EXCEPT 5 additional brook trout may be retained as part of daily possession limit.	10 BKT

Isabella	
Streams	Type
Chippewa River from Outlet of Lake Isabella, (T15N, R6W, S35) Isabella Co. downstream to confluence with the Tittabawassee River, (T14N, R2E, S21), Midland Co.	3

Jackson	
Lakes	Type
Farwell Lake	C
Swains Lake	C
Streams	Type
South Branch Rice Creek from Concord Rd. downstream to confluence with Kalamazoo River.	4

Kalamazoo	
Lakes	Type
Gull Lake	E
Little Paw Paw Lake	C
Ruppert Lake	C
Streams	Type
Augusta Creek from Little Gilkey Lake and Fair Lakes outlets downstream to Knappen Mills Dam.	4
Portage Creek downstream limit is Kilgore Rd. (T3S, R11W, S3).	4

Kalkaska	
Lakes	Type
Bear Lake	B
Big Blue Lake	B
Big Guernsey Lake	C
Big Twin Lake	C
North Blue Lake	B
Starvation Lake	C
Streams	Type
Manistee River from M-72 downstream to Sunset Trail Rd. (CCC Bridge T26N, R6W, S26).	GR
Manistee River from Sunset Trail Rd. (CCC Bridge T26N, R6W, S26) downstream to M-115.	4
Rapid River from Antrim (Rugg) Pond downstream to Torch River.	4
Torch River from Torch Lake downstream to Lake Skegemog.	4

Kent	
Lakes	Type
Lime Lake	C
Streams	Type
Ball Creek downstream limit is confluence with Rogue River.	4
Buck Creek downstream limit is confluence with Grand River.	4
Coldwater River from Freeport Rd. downstream to confluence with Thornapple River.	4
Nash Creek downstream limit is confluence with Rogue River.	4

Rogue River downstream limit is confluence with Grand River.	4
Keweenaw	
Lakes	Type
Lost Lake	D
No Name Pond (T57N, R31W, S8)	A
Streams	Type
Eagle River upstream limit is dam at Eagle River Village.	4
Fanny Hooe River upstream limit is Lake Fanny Hooe.	4
Gratiot River from Bridge (T57N, R32W, S19,20) downstream to L. Superior.	4
Silver Creek upstream limit is Falls (T58N, R32W, S26).	4
Silver River upstream limit is Hwy M-26.	4
Tobacco River upstream limit is mouth of Black Brook Creek.	4
Tobacco River and all tributaries upstream from Gagnon Road. Type 1 regulations apply, EXCEPT 5 additional brook trout may be retained as part of daily possession limit.	10 BKT
Lake	
Streams	Type
Little Manistee River from North Peacock Trail (Spencer's Bridge T19N, R13W, S5) to Johnson's Road (Johnson's Bridge T20N, R14W, S24). SC - Closed to Fishing - Jan. 1 - March 31 - from a point 300 feet upstream of the DNR weir to Spencer's Bridge.	GR
Little Manistee River from Johnson Rd. (Johnson's Bridge) downstream to Manistee Lake. SC - Closed to Fishing - Jan. 1 - March 31 - from a point 300 feet upstream of the DNR weir to Spencer's Bridge. Special artificial lure regulations apply Aug.1 - Nov. 15, see p. 8.	4
Pere Marquette River from M-37 to the downstream edge of the boat ramp/slide at Gleason's Landing.	GR
Pere Marquette River from the downstream edge of the boat ramp/slide at Gleason's Landing to the upstream edge of the boat ramp at Rainbow Rapids. Special artificial lure regulations apply Aug.1 - Nov. 15, see p. 8.	GR

Pere Marquette River from the upstream edge of the boat ramp at Rainbow Rapids (T18N, R14W, S27) downstream to Reek Rd. (Indian Bridge). Special artificial lure regulations apply Aug.1 - Nov. 15, see p. 8.	4
Pine River from Elm Flats Public Access Site to confluence with Tippy Dam backwaters.	2
Leelanau	
Lakes	Type
Big Glen Lake	E
Lime Lake	C
North Lake Leelanau	E
Streams	Type
Crystal River from Fisher Dam downstream to L. Michigan.	3
Leland River	3
Shalda Creek from Little Traverse Lake outlet (T29N, R13W, S10) downstream to L. Michigan.	4
Lenawee	
Lakes	Type
Allens Lake	C
Deep Lake	C
Livingston	
Lakes	Type
Spring Mill Pond, (Island Lake Recreation Area): No fishing March 15 - March 31. Catch-and-release fishing for trout - artificial lures only - April 1 - the Fri. before the last Sat. in April; from the last Sat. in April - March 14, 5 fish limit, 8-inch minimum size limit, no more than 3 fish 15" or larger, artificial and natural baits may be used.	
Luce	
Lakes	Type
Belle Lake 1	E
Bennett Springs Lake	A
Brockies Pond (T46N, R11W, S1)	A
Bullhead Lake	A
Camp 8 Lake	B
Dairy Lake	A
Deer Lake	D
Dillingham Lake	A
Holland Lake	A
Jack Lake	A
Little Whorl Lake	A
Moon Lake	D

Peanut Lake	E
Pratt Lake	A
Pretty Lake	B
Sid Lake	D
Silver Creek Pond	A
Spring Creek Pond	A
Syphon Lake	A
Tank Lake	B
Trout Lake	A
Ward Lake	A
Wolverine Lake	A
Youngs Lake	A
Streams	Type
Blind Sucker River upstream limit is Blind Sucker Flooding Dam.	4
North Branch Two Hearted River and all tributaries upstream of County Road 418 Bridge. Type 1 regulations apply, EXCEPT 5 additional brook trout may be retained as part of daily possession limit.	10 BKT
Two-Hearted River from Co. Rd. 407 (High Bridge) downstream to L. Superior.	4
West Branch Sage River and all tributaries upstream of Highway M-28. Type 1 regulations apply, EXCEPT 5 additional brook trout may be retained as part of daily possession limit.	10 BKT
Mackinac	
Lakes	Type
Castle Rock Pond	A
Millecoquins Pond	A
Streams	Type
Black River upstream limit is Peters Truck Trail Footbridge.	4
Black River and all tributaries upstream from Peters Truck Trail footbridge. Type 1 regulations apply, EXCEPT 5 additional brook trout may be retained as part of daily possession limit.	10 BKT
Brevoort River upstream limit is Brevoort Lake.	4
Carp River, Mainstream	4
Crow River upstream limit is outfall of Amadon Pond.	4
Millakokia River Inland-Limestone Co. Railroad Bridge (T41N, R13W, S1) downstream to L. Michigan.	4
Millecoquins River from H-40 bridge downstream to L. Michigan.	4

Paquin Creek and all tributaries upstream from L. Michigan. Type 1 regulations apply, EXCEPT 5 additional brook trout may be retained as part of daily possession limit.	10 BKT
Pine River from H-40 Bridge downstream to L. Huron.	4
Macomb	
Streams	Type
Clinton River from Yates Dam above Dequindre Rd. downstream to Lake St. Clair.	4
North Branch Clinton River from 32 Mile Rd. downstream to confluence with Clinton River.	4
Manistee	
Lakes	Type
Arcadia Lake from M-22 to L. Michigan.	F
Manistee Lake from Railroad Bridge below M-55 (T21N, R16W, S6) to L. Michigan.	F
Portage Lake	F
Streams	Type
Bear Creek from County Road 600 (T23N, 14W, S6) downstream to confluence with Manistee River. Special artificial lure regulations apply, see p. 8.	3
Betsie River from Kurick Rd. downstream to M-22. Special artificial lure regulations apply Aug.1 - Nov. 15, see p. 8.	4
Little Manistee River from Johnson Rd. (Johnson's Bridge) downstream to Manistee Lake. SC - Closed to Fishing - Sep. 1 - Nov. 14 and Jan. 1 - March 31 from a point 300 feet downstream from the DNR weir in T21N, R16W, S25 to Manistee Lake. SC - Closed to Fishing - Year-round within 300 feet of the DNR weir, T21N, R16W, S25. SC - Closed to Fishing - Jan. 1 - March 31 from a point 300 feet upstream of the DNR weir to Spencer's Bridge. NOTE: The daily possession limit shall be 1 rainbow trout from 300' downstream of Little Manistee River Weir to Manistee Lake. Special artificial lure regulations apply Aug.1 - Nov. 15, see p. 8.	4
Manistee River from Hodenpyl Res. downstream to Red Bridge.	4

Manistee River from Tippy Dam downstream to Railroad Bridge below M-55 (T21N, R16W, S6). Special artificial lure regulations apply Aug.1 - Nov. 15, see p. 8.	3
Pine River from Elm Flats Public Access Site to confluence with Tippy Dam backwaters.	2
Marquette	
Lakes	Type
Bass Lake	B
Bedspring Lake	A
Brocky Lake	B
Cedar Lake	B
Clear Lake	A
Cranberry Lake	A
Crooked Lake	B
Forestville Basin	B
Island Lake (T45N, R30W, S14)	A
Just Lake	A
Lake Arfelin	E
Little Brocky Lake	B
Little Shag Lake	B
Log Lake	A
Moccasin Lake	A
Pauls Lake, North	D
Pauls Lake, South	D
Perch Lake	B
Rockingchair Lake, North	D
Rockingchair Lake, South	D
Section 13 Lake	A
Silver Lake Basin	B
Silver Lake	A
Slough Lake	A
South Kidney Lake (T45N, R26W, S28)	D
Sporley Lake	E
Strawberry Lake	D
Swanzey Lake	A
Twin Lake (T45N, R30W, S23)	B
Streams	Type
Big Garlic River from Forks (T49N, R27W, S12) downstream to L. Superior.	4
Big Garlic River and tributaries from County Road 550 (T50N, R26W, S33) downstream to L. Superior (T50N, R26W, S21).	BTRA
Big Huron River from Big Eric's Bridge (T52N, R30W, S35) downstream to L. Superior (T52N, R29W, S18).	4 BTRA

Boise Creek and all tributaries upstream from Red Road. Type 1 regulations apply, EXCEPT 5 additional brook trout may be retained as part of daily possession limit.	10 BKT
Carp River from Deer Lake Dam (T48N, R27W, S27) downstream to Morgan Creek.	2
Carp River from Morgan Creek downstream to L. Superior.	3
Chocolay River from confluence of Big Creek (T47N, R24W, S9) downstream to L. Superior.	3
Ford River from T43N, R27W, S33 (Dickinson Co.) downstream to L. Michigan.	4
Harlow Creek from Railroad Bridge (T49N, R26W, S24) downstream to L. Superior.	4
Iron River from Lake Independence Dam (T51N, R27W, S13) downstream to L. Superior (T51N, R26W, S18).	4 BTRA
Little Huron River from unnamed bridge crossing located at the southern border of section 20 (T52N, R29W, S20) downstream to L. Superior (T52N, R29W, S17).	BTRA
Salmon-Trout River, Research Area: <ul style="list-style-type: none"> From the last Saturday in April - Aug. 14, Type 2 stream regulations apply, EXCEPT brook trout regulations are as follows: 18" minimum size limit, daily harvest/possession is (1) fish. From Aug. 15 - Friday before the last Saturday in April, the river is closed to fishing. These regulations apply to that portion of the Salmon-Trout River from Lower Falls (T51N, R28W, S13) down to L. Superior. 	RA
Trout Falls Creek and tributaries upstream from Co. Rd. LB (18 Rd.). Type 1 regulations apply, EXCEPT 5 additional brook trout may be retained as part of daily possession limit.	10 BKT



Mason	
Lakes	Type
Pere Marquette Lake from Old 31 Highway to L. Michigan.	F
Streams	Type
Big South Branch Pere Marquette River from confluence of Beaver/Winnepegauk creeks downstream to confluence with Pere Marquette River. Special artificial lure regulations apply Aug.1 - Nov. 15, see p. 8.	4
Lincoln River from confluence of N. and S. Br. of Lincoln River, (T19N, R17W, S32) downstream to L. Michigan.	3
Little Manistee River from Johnson Rd. (Johnson's Bridge) downstream to Manistee Lake. SC - Closed to Fishing - Jan. 1 - March 31 from a point 300 feet upstream of the DNR weir to Spencer's Bridge. Special artificial lure regulations apply Aug.1 - Nov. 15, see p. 8.	4
Pentwater River and all tributaries. Special artificial lure regulations apply Aug.1 - Nov. 15, see p. 8.	
Pere Marquette River from the upstream edge of the boat ramp at Rainbow Rapids (T18N, R14W, S27) downstream to Reek Rd. (Indian Bridge). Special artificial lure regulations apply Aug.1 - Nov. 15, see p. 8.	4
Pere Marquette River from Reek Rd. (Indian Bridge) downstream to Old US-31. Special artificial lure regulations apply Aug.1 - Nov. 15, see p. 8.	3
Sable River (Big) from Bridge Crossing (T19N, R15W, S3) downstream to Hamlin Lake.	4
Sable River (Big) from Hamlin Lake Dam downstream to L. Michigan. Special artificial lure regulations apply, see p. 8.	3
Mecosta	
Streams	Type
Little Muskegon River	4
Muskegon River from US-10 downstream to River Bend Bluffs Public Access Site (T15N, R9W, S31).	4

Menominee	
Streams	Type
Big Cedar River from Veterans Memorial Park Dam (T38N, R26W, S9) downstream to L. Michigan.	4
Ford River from T43N, R27W, S35 (Dickinson Co.) downstream to L. Michigan.	4
Walton Creek (River) from Westmann Dam (T35N, R25W, S18) down to L. Michigan.	4
Midland	
Streams	Type
Chippewa River from outlet of Lake Isabella, (T15N, R6W, S35) Isabella Co. downstream to confluence with the Tittabawassee River, (T14N, R2E, S21), Midland Co.	3
Tittabawassee River from Sanford Dam downstream to confluence with the Saginaw River. SC - Closed to Fishing - March 16 - Fri. before last Sat. in April between Sanford Dam and the mouth of the Salt River (T15N, R1W, S24). SC - Closed to Fishing - March 16 - Fri. before last Sat. in April between the Dow Dam and Gordonville Bridge (T13N, R2E, S1).	3
Montcalm	
Lakes	Type
Marl Lake	C
Nevins Lake	C
Streams	Type
Fish Creek from Sidney Rd. (T10N, R6W, S20) downstream to confluence with Maple River.	4
Little Muskegon River	4
Prairie Creek	4
Tamarack Creek	4
Montmorency	
Lakes	Type
Avalon Lake	B
Clear Lake	B
Lake Fifteen	B
McCormick Lake	B
Streams	Type
Black River from Tin Shanty Bridge Rd. downstream to the Town Corner Lake Stairs (T32N, R1E, S31).	GR
Thunder Bay R. from Atlanta dam to Sucker Cr. confluence upstream of Hillman Pond.	4

Muskegon	
Lakes	Type
Duck Lake from Nestrom Rd. to L. Michigan.	F
Half Moon Lake	C
Mona Lake from US-31 to L. Michigan.	F
Muskegon Lake from M-120 to L. Michigan.	F
White Lake from Business Route US-31 (in Whitehall) to L. Michigan.	F
Streams	Type
Cedar Creek from River Rd. (T11N, R15W, S33) downstream to confluence with Muskegon River.	3
Muskegon River from Croton Dam downstream to M-120. Special artificial lure regulations apply Aug.1 - Nov. 15, see p. 8.	3
North Branch Crocker Creek mainstream from Kenowa Ave. (T10N, R13W, S36) downstream to confluence with Crocker Creek mainstream at Ravenna.	4
White River from Hesperia Dam downstream to White Lake (Business Route US-31 in Whitehall) Special artificial lure regulations apply Aug.1 - Nov. 15, see p. 8.	4
Newaygo	
Lakes	Type
Condon Lake	C
Streams	Type
Big South Branch Pere Marquette River from confluence of Beaver/ Winnepesaug creeks downstream to confluence with Pere Marquette River. Special artificial lure regulations apply Aug.1 - Nov. 15, see p. 8.	4
Little Muskegon River	4
Muskegon River from Croton Dam downstream to M-120. Special artificial lure regulations apply Aug.1 - Nov. 15, see p. 8.	3
Tamarack Creek	4
Oakland	
Lakes	Type
Maceday Lake	C

Streams	Type
Huron River from the Sign below Moss Lake Outlet to the Signs 100 yards below Wixom Rd. (T2N, R7E, S13).	GR
Paint Creek from Gunn Rd. to Tienken Rd.	GR
Oceana	
Lakes	Type
Pentwater Lake from Long Bridge Rd (B15) to L. Michigan.	F
Silver Lake downstream limit is L. Michigan.	F
Stony Lake from inlet of Stony Creek to L. Michigan.	F
Streams	Type
Big South Branch Pere Marquette River from confluence of Beaver/ Winnepesaug creeks downstream to confluence with Pere Marquette River. Special artificial lure regulations apply Aug.1 - Nov. 15, see p. 8.	4
North Branch Pentwater River from Oceana Dr. downstream to confluence with mainstream of Pentwater River. Special artificial lure regulations apply Aug.1 - Nov. 15, see p. 8.	4
North Branch White River from Arthur Rd. downstream to confluence with White River. Special artificial lure regulations apply Aug.1 - Nov. 15, see p. 8.	4
Pentwater River from Hart Dam downstream to confluence with Pentwater Lake (Long Bridge Rd. or B15). Special artificial lure regulations apply Aug.1 - Nov. 15, see p. 8.	4
White River from Hesperia Dam downstream to Lake Michigan. Special artificial lure regulations apply Aug.1 - Nov. 15, see p. 8.	4
Ogemaw	
Lakes	Type
Lake George	B
Streams	Type
Rifle River from Sage Lake Road (T23N, R3E, S22) downstream to Saginaw Bay.	3
Ontonagon	
Lakes	Type
Courtney Lake	B

Mirror Lake	B
Trout Creek Pond	C
Streams	Type
Big Iron River from Koshak Rd. Bridge (T49N, R43W, S2) downstream to L. Superior.	3
Big Iron River and all tributaries upstream from Federal Forest Road 791 (County Road 360). Type 1 regulations apply, EXCEPT 5 additional brook trout may be retained as part of daily possession limit.	10 BKT
Bluff Creek and all tributaries upstream from Choate Road. Type 1 regulations apply, EXCEPT 5 additional brook trout may be retained as part of daily possession limit.	10 BKT
East Branch Ontonagon River upstream limit is Hwy. M-28.	3
East Sleeping River from railroad trestle (T53N, R38W, S25) downstream to L. Superior.	3
Firesteel River (including East & West Branch) upstream limit is Hwy. M-26.	3
Little Iron River upstream limit is Nonesuch Falls (T50N, R43N, S1).	3
Middle Branch Ontonagon River downstream limit is Agate Falls.	2
Middle Branch Ontonagon River Agate Falls is upstream limit.	3
Misery River upstream limit is bridge in T53N, R37W, S15.	3
Ontonagon River	3
Union River from South Boundary Rd. (T51N, R42W, S22) downstream to L. Superior.	4
West Branch Big Iron River from Burnt Dam Bridge (T50N, R44W, S36) downstream to confluence with Big Iron River.	3
West Branch Firesteel River and all tributaries upstream from Highway M-38. Type 1 regulations apply, EXCEPT 5 additional brook trout may be retained as part of daily possession limit.	10 BKT
West Branch Ontonagon River upstream limit is confluence with Victoria Hydro Station tail race (T50N, R39W, S29). SC - Closed to Fishing - April 1 - June 10 from its confluence with the Victoria Hydro Station tail race in the SE1/4 of the SW1/4 of T50N, R39W, S29 upstream to Victoria Dam.	3

Osceola	
Lakes	Type
Center Lake	C
Streams	Type
Muskegon River from US-10 downstream to River Bend Bluffs Public Access Site (T15N, R9W, S31).	4
Oscoda	
Lakes	Type
Crater Lake	A
Loon Lake	B
Streams	Type
Au Sable River Mainstream from McMasters Bridge Rd. (McMasters Bridge) downstream to Rainbow Bend power line (T26N, R2E, S3).	4
Au Sable River Mainstream from Mio Dam down to the Mio power line at (T26N, R3E, S7).	4
Au Sable River Mainstream from Mio power line (T26N, R3E, S7) downstream to Evans Rd. (McKinley Bridge).	GR
Au Sable River Mainstream from Evans Rd. (McKinley Bridge) downstream to 4001 Bridge.	2
Otsego	
Lakes	Type
Big Chub Lake	B
Bridge Lake	B
Ford Lake	D
Heart Lake	B
Lost Lake	D
North Twin Lake	D
Pickere Lake	B
Section Four Lake	D
South Twin Lake	D
West Lost Lake	D
Streams	Type
Black River from Tin Shanty Bridge Rd. downstream to the Town Corner Lake Stairs (T32N, R1E, S31).	GR
Manistee River from headwaters downstream to Co. Rd. 612.	2
Pigeon River from Old Vanderbilt Rd. downstream to Elk Hill Campground Horse Trail (T32N, R1W, S10).	2
Pigeon River from Elk Hill Campground Horse Trail to Pine Grove Campground stairs.	GR

Ottawa	
Lakes	Type
Lake Macatawa from River Ave. to L. Michigan.	F
Pigeon Lake from Lakeshore Drive to L. Michigan.	F
Streams	Type
Crockery Creek Mainstream from Moore Rd. (T10N, R13W, S4) in Muskegon Co. downstream to confluence with Grand River (Ottawa Co.).	4
North Branch Crockery Creek mainstream from Kenos Ave. (T10N, R13W, S36) downstream to confluence with Crockery Creek mainstem at Ravenna.	4
Sand Creek	4
Presque Isle	
Lakes	Type
Bear Den Lake (T33N, R2E, S32)	B
Trout Creek Pond (T35N, R5E, S17)	C
Streams	Type
Ocqueoc River from Barnhart Lake downstream to L. Huron.	4
Swan River from US-23 Bridge downstream to L. Huron. SC - Closed to Fishing - Whenever weir is in place - from 300 feet above weir to mouth (T35N, R6E, S20 & S29).	3
Trout River from dam (T35N, R5E, S17) downstream to L. Huron.	3
Roscommon	
Lakes	Type
Higgins Lake	E
Saginaw	
Streams	Type
Saginaw River	3
Tittabawassee River from Sanford Dam downstream to confluence with the Saginaw River.	3
Schoolcraft	
Lakes	Type
Banana Lake	B
Bear (Nineteen) Lake	B
Kings Pond	A
Lost Lake	A
Ned's Lake	D
Spring Pond	A

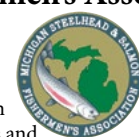
Twilight Lake	
Streams	Type
Driggs River and all tributaries upstream from Highway M-28. Type 1 regulations apply, EXCEPT 5 additional brook trout may be retained as part of daily possession limit.	10 BKT
Fishdam River and all tributaries upstream from County Road 2222 Bridge. Type 1 regulations apply, EXCEPT 5 additional brook trout may be retained as part of daily possession limit.	10 BKT
Fox River from Fox River State Forest Campground (T46N, R14W, S11) to M-28.	GR
Manistique River upstream limit is Papermill Dam.	4
Middle and South Branch Stutts Creek and all tributaries upstream from State Highway M-94. Type 1 regulations apply, EXCEPT 5 additional brook trout may be retained as part of daily possession limit.	10 BKT
Milakokia River Inland-Limestone Co. Railroad Bridge (T41N, R13W, S1) downstream to L. Michigan.	4
St. Clair	
Streams	Type
Belle River	4
Black River from private dam in Port Huron State Game Area downstream to confluence with St. Clair River.	3
Mill Creek downstream limit is confluence with Black River.	4
St. Joseph	
Streams	Type
Curtis Creek and Tributaries	2
Mill Creek and Tributaries from Preston Road (T7S, R12W, S7) downstream to impoundment at T7S, R12W, S32.	4
Prairie River Mainstream from Bowers Road (T8S, R7W, S4) downstream to McKale Road (T7S, R9W, S8).	4
Unnamed Tributary (T6S, R10W, S26).	4
Van Buren	
Lakes	Type
Shafer Lake	C

Streams	
Type	
Black River Mainstream from confluence of N. and S. Br. down to L. Michigan.	3
Brush Creek Except Reynolds Lake Drain from 63rd Ave. downstream to confluence with Paw Paw River.	4
Dowagiac River Mainstream (including Dowagiac Drain) from source downstream to Pucker Street (T7S, R17W, S13).	4
Pine Creek downstream limit is 101st Ave. (T1N, R12W, S32).	4
South Branch of the Black River from Hamilton Street Bridge (T2S, R16W, S1) downstream to confluence with mainstream (T1S, R17W, S2). Type 1 from Hamilton St. Bridge up to Bangor City Dam. S. Br. Black River and all Tributaries upstream of Breedsville (Mill Str.) - it shall be unlawful to use other than one single-pointed unweighted hook measuring 1/2" or less from point to shank.	3
South Branch Paw Paw River (aka Gates Drain or West Branch) and tributaries downstream to the railroad bridge downstream of I-94 (T3S, R14W, S14).	4
Wayne	
Streams	Type
Huron River from Belleville Lake Dam in Wayne Co. downstream to L. Erie.	4
Wexford	
Streams	Type
Manistee River from Sunset Trail Rd. (CCC Bridge T26N, R6W, S26) downstream to M-115.	4
Pine River from Elm Flats Public Access Site to confluence with Tippy Dam backwaters.	2



Michigan Steelhead & Salmon Fishermen's Association

Protecting,
Promoting
and Enhancing
Sport Fishing in
the Great Lakes and
Connecting Waterways
since 1971...



If you agree
or disagree with
this guide's rules,
become a member
to influence the next
printing.

mssfa.org
We'll **HOOK YOU UP** with the latest news!

Visit Michigan's State Fish Hatcheries with your Stamp & Go Guide!

Pick up one of these fun booklets at any Michigan state park or fish hatchery.

There are six hatcheries in the state, offering you

plenty of
chances
to see fish
rearing up
close! Plus
they're all
open year-
round - at

no charge to you! At each hatchery you visit be sure to get your Stamp & Go Guide stamped to document your time there. The guide is also

full of info on Michigan's state parks, kids activities, historic sites and accessible recreation. For more information visit

Michigan.gov/hatcheries.

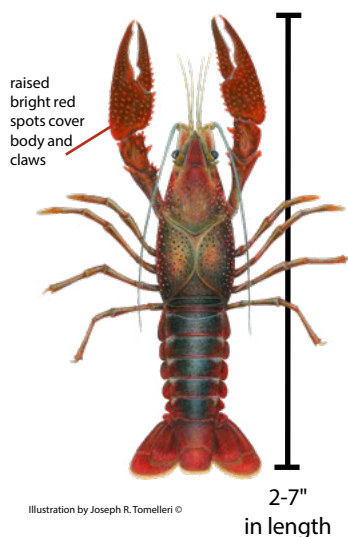


Aquatic Invasive Plants and Animals

Michigan's waters are threatened by numerous nonnative aquatic invasive plants and animals. Species such as the zebra mussel, round goby, sea lamprey, Eurasian ruffe, European frog-bit, Eurasian watermilfoil, and rusty crayfish are causing significant damage to Michigan's natural resources. A number of species also are knocking at the door, including bighead carp and silver carp, which are coming up the Illinois River and Chicago Area Waterway that could potentially enter L. Michigan, and snakehead fish that are found in other Eastern states. Aquatic invasive species are harmful to recreational fishing and do extensive economic and natural resource damage. **To help reduce the spread of invasive species, anglers are reminded to properly dispose of all bait including worms, crayfish and minnows in a trash receptacle and report any potential invasive species to the DNR.**

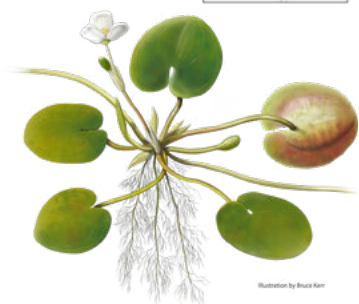
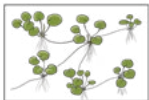
The following illustrations show a few of the most serious aquatic nuisance species threatening Michigan:

Red Swamp Crayfish

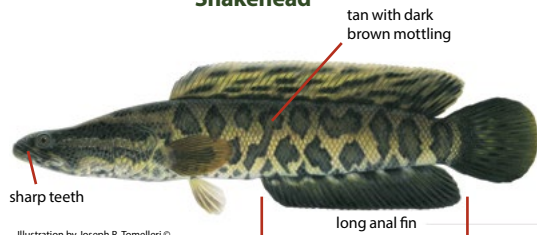


European Frog-Bit

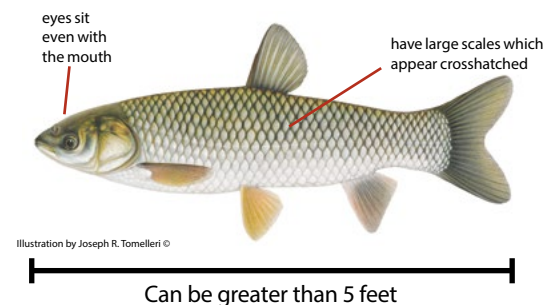
Floating leaves: round or heart-shaped, the size of a silver dollar coin



Snakehead



Grass Carp



New Zealand Mudsnail



Average length: 1/8"
Brown with 5 whirls
Typically found in coldwater streams



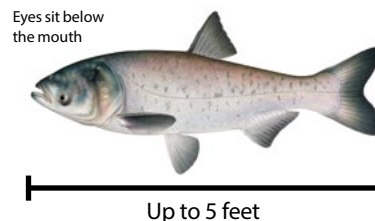
Images courtesy of MN Sea Grant & USGS

Invasive Carp Identification

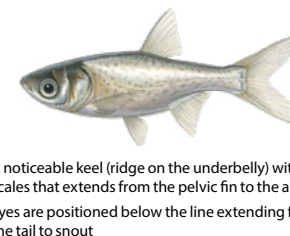
Adult bighead and silver carp are large fish that can be easily identified by the position of their eyes. Both species have eyes that are below a line from the fork of the tail to the mouth. Juvenile invasive carp can be easily confused with minnows and you may find one in your bait bucket. Anglers are reminded to dispose of any unused bait in the trash!

If you believe you have seen or caught an invasive carp, **DO NOT RELEASE IT**. Please visit Michigan.gov/invasivcarp to fill out an online invasive carp reporting form, or call the DNR at 517-284-5830.

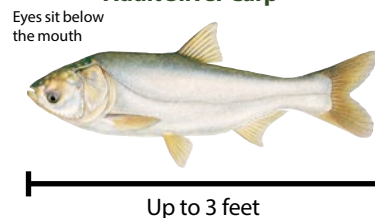
Adult Bighead Carp



Juvenile Bighead Carp

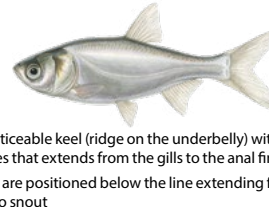


Adult Silver Carp



Adult Invasive Carp illustrations by Joseph R. Tomelleri ©

Juvenile Silver Carp



Juvenile Invasive Carp illustrations by Emily Damstra ©

Help Stop the Spread!

Anglers and boaters can help prevent the spread of fish diseases and other aquatic invasive species by taking the following steps:

- **CLEAN** your boat, trailer, waders and equipment.
- **DRAIN** the water from your boat, including the live well and bilge.
- **DRY** boats and equipment for five days before moving to a new waterbody.
- **DISPOSE** of all unused bait in the trash, not in the water, to prevent the movement of invasive pathogens, plants and animals.
- **PURCHASE** live bait from a retailer or collect it from the same waterbody where you will be fishing.
- **EDUCATE** your friends and family about the measures they can take to prevent the spread of invasive species.
- Do not move fish or fish parts from one body of water to another.
- Only purchase live bait from a retailer.
- Do not release live bait into any water body. Dispose of them properly in the trash.
- Report unusual fish or unusual numbers of dead or dying fish to the local DNR Customer Service Centers (see p. 65).
- Educate other anglers about measures they can take to prevent the spread of fish diseases and other aquatic nuisance species.

The DNR wants to emphasize the importance of reporting anything unusual you see, including unidentified fish or groups of dead or dying fish. Anglers should make a note of the day, time and location of the sighting and take a picture, if possible. Submit these reports to a DNR Customer Service Center (p. 65) or by visiting Michigan.gov/invasives or the Midwest Invasive Species Information Network (misin.msu.edu).

Fishing Tournament Information

Beginning January 1, 2019, the following shall be registered online using the DNR's Michigan Fishing Tournament Information System:

- 1) All bass fishing tournaments
- 2) All walleye fishing tournaments
- 3) All competitive fishing events targeting muskellunge

Tournaments and muskellunge competitive fishing events must register online at: www.mcgi.state.mi.us/fishingtournaments/. Tournament directors shall verify all tournament participants and provide a unique registration receipt to all participating anglers. Tournament directors shall report tournament results to the DNR by December 31, annually.

A fishing tournament is considered one that meets all of the following criteria: (a) the determination of a winner is based on the cumulative weight or length of the targeted fish species caught by an angler or team of anglers; (b) occurs during a defined period, which can be on one or multiple days but does not exceed five days; (c) is anchored to a single boating access site or designated nearby location where fish caught by participating anglers or teams are to be weighed-in, entered or the group is otherwise operating their event from; and (d) is limited to a single waterbody or connected waterbodies [ex: Lake St. Clair, Detroit River and Lake Erie] that are accessed by a common access site.

A fishing tournament is **not** where "winning" or prize distribution is determined solely on one or more of the following criteria: (a) who caught the largest fish or some combination of big fish awards; (b) who caught the smallest fish; (c) who caught the first fish; (d) who caught the most fish species; and/or (e) any other format that does not involve an angler or team of anglers entering a cumulative weight or length of the target species.

A competitive fishing event is considered to be any other organized competition among anglers involving prize distribution or the declaration of a winner that is not defined as a fishing tournament.

For more information, consult Fisheries Order 250 at Michigan.gov/fishingtournaments.

The Fishing Tournament Information System can be used by the public to determine where fishing tournaments are scheduled.

Boat Registration

For information about boat registration, please see "The Handbook of Michigan Boating

Laws & Responsibilities" available online at Michigan.gov/boating. Boat registrations are handled through the Secretary of State.

Lead Alternatives

The DNR would like to remind anglers that lead can cause mortality when ingested by mammals and birds. There are nontoxic alternatives to lead such as tin, bismuth, steel and tungsten-nickel alloy for use in jigs, sinkers and other gear. These materials can be found at established sporting goods retailers and online.

Ice Shanties

A person placing a shanty on the ice for fishing shall permanently affix their name and address **OR** drivers license number **OR** DNR sportcard number on ALL SIDES of the shanty in legible alphanumeric letters that are at least 2" in height. The letters shall be readily visible and consist of material not soluble in water. The information identifying the owner must be on the shanty and may not be placed on a board or other material that is then attached to the shanty. Tents or other temporary shelters must be removed from the ice at the conclusion of each day's fishing activity and do not require identification.

Persons placing a shanty on the waters of the **Upper Peninsula** shall remove the shanty by midnight of March 31 each year. Persons placing a shanty on Michigan-Wisconsin boundary waters shall remove the shanty by midnight of March 15 each year (see pp. 24-25).

Persons placing a shanty on waters in the counties of **Alcona, Alpena, Antrim, Arenac, Bay, Benzie, Charlevoix, Cheboygan, Clare, Crawford, Emmet, Gladwin, Grand Traverse, Iosco, Isabella, Kalkaska, Lake, Leelanau, Manistee, Mason, Mecosta, Midland, Missaukee, Montmorency, Newaygo, Oceana, Ogemaw, Osceola, Oscoda, Otsego, Presque Isle, Roscommon or Wexford** shall remove the shanty by midnight of March 15 each year. Persons placing a shanty upon the waters of the **remaining portion of the Lower Peninsula** shall remove the shanty by midnight on March 1 each year. Shanties placed on **L. St. Clair** shall be removed before sunset on the first Sunday after Feb. 20 each year. In all areas, a shanty must be removed if ice conditions become unsafe, regardless of the date. After the above dates, a shanty must be removed at the end of each day's fishing activity.

A map of Michigan's ice shanty regulations can be found online.

Parasites and Diseases of Fish

Occasionally anglers catch fish with black, pinhead-size spots which cause the fish to have a peppered appearance, or a fish may be caught which has

white-to-yellow-colored grubs under the skin or in the flesh. Yellow perch taken from the shallower waters of the Great Lakes often contain red worms coiled within the body cavity. These conditions are caused by common fish parasites. Fish with these parasites are safe to eat because the parasites are killed by cooking. Black spot and yellow grub parasites are most common in bass, sunfish (all species) and northern pike, and red worm is specific to yellow perch. These parasites may be found in other species of fish as well.

It is not unusual for anglers to catch walleye with pink, whitish or yellowish wart-like growths on their bodies and fins. These markings are caused by fish viruses, the most common of which is called lymphocystis. This is primarily a skin disease, and the flesh is usually not affected. Lymphocystis is harmless to humans and affected fish are safe to eat. Skinning the fish usually removes all diseased tissue. If a legal-size fish is heavily affected and appears aesthetically unpleasing, it should be kept for disposal because a fish that is released will only spread more virus. Please note, if you keep a fish for disposal it is still part of your daily possession limit.

Northern pike from some waters occasionally are caught with various size and colors of external

tumors which may be whitish, creamy, pink or red. In advanced stages, the tumors are ugly open sores tinged with red and often are referred to as red sore. These tumors are caused by a naturally occurring virus which is specific to northern pike and muskellunge. The disease is not known to be infectious to other animals or man; however, affected fish are not aesthetically pleasing and should not be eaten. Affected fish (of legal size) should be kept for disposal because a fish that is released may spread the infection to other fish. Please note, if you keep a fish for disposal it is still part of your daily possession limit.

Seasonal Fish Mortalities

Throughout the year, it is not uncommon to witness dead or dying fish in ponds and lakes across the state. Many incidents stem from natural causes such as winter kill, brought about by a depletion of oxygen supplies coincident with heavy snow and ice cover; stress (brought about by low oxygen levels); periods of unusually rapid temperature increase or natural stresses associated with spawning. The deaths may be viewed as nature's way of reducing the fish population and selecting those fish which are most fit for survival. If you suspect a fish kill is caused by non-natural causes, please call your nearest DNR location (see p.65) or Michigan's Pollution Emergency Alert System at 800-292-4706.



YOU HELP PROTECT MICHIGAN'S WILD PLACES.

Your licenses provide over \$62 million a year to conserve wildlife, public lands and waters. Because of you, habitats have been restored and populations of muskie, lake sturgeon, waterfowl and other game species have been preserved for the use and enjoyment of future generations.

MICHIGAN
WILDLIFE
COUNCIL

HereForMiOutdoors.org

Thank you for purchasing a Michigan Fishing License

Each year an estimated two million Michigan residents and nonresidents fish Michigan waters. Recreational fishing is the largest and highest-valued use of the state's fishery resources. The economic impact of sport fishing is in excess of \$4 billion annually and provides more than 38,000 jobs.

The mission of the DNR Fisheries Division is to protect and enhance Michigan's aquatic life and habitats for the benefit of current and future generations.

Revenue from fishing and hunting license sales supports DNR activities to enhance Michigan's natural resources. The license sales also increase federal revenue to the State of Michigan for the management of these resources. Please help to support Michigan's abundant natural resources by purchasing a fishing and hunting license each year. Learn more at Michigan.gov/itsyournature.

Fisheries Division Appropriation Budget: Fiscal Year 2018-2019 (\$32,171,800)

Funding Sources

Game and Fish Protection Fund: \$19,330,400 (60%)
The funds are mainly derived from fishing and hunting license revenues and all monies are earmarked for fishing and hunting-related operations.

Federal Funds: \$11,402,200 (35%)

Our primary federal funding source is the Sport Fish Restoration fund program, which comes from a federal excise tax on fishing equipment and a portion of the federal fuel tax revenue attributed to motorboats. Michigan received \$10.7 million in fiscal year 2018 (seventh highest in the nation) based on a distribution formula of land/water area and number of state fishing license holders. Of this amount, \$9.1 million was used for Fisheries Division programs. The remaining \$1.6 million was used by Parks and Recreation Division for projects in support of boating access.

Other Funds: \$1,439,200 (5%)

State general fund/general purpose, litigation settlement and private funds.

Appropriations by Program (Total: \$32,171,800)

Fisheries Resources Management and Cormorant Population Mitigation Programs: \$21,213,600 (66%)
Expenditures are for the protection and maintenance of healthy Great Lakes and inland waters and fish communities and for the rehabilitation of those species and habitats that have been degraded.

Fish Production Program: \$10,328,900 (32%)

Expenditures are for the hatching, rearing and transportation of fish required for management of both the Great Lakes and inland fisheries.

Aquatic Resource Mitigation Program: \$629,300 (2%)

Expenditures are for the mitigation of damages related to the settlement of permit violations in Michigan waters. Funds are used for fish habitat rehabilitation, for the protection of intact habitat as compensation for damages, and to improve fishing access.

For more information on our actual expenditures, check out our Annual Report at Michigan.gov/fishing.

Other sources of information:

Great Lakes Fishery Commission:
glfc.org

Great Lakes Fishery Trust:
glft.org

Great Lakes Sport Fishing Council:
great-lakes.org

Great Lakes Council of the Federation of Fly Fishers:
ffglc.org

Michigan Charter Boat Association:
mich charterboats.com

Michigan Council of Trout Unlimited:
michigantu.org

Michigan Steelhead and Salmon Fishermen's Association:
michigansteelheaders.org

Michigan Sea Grant:
mseagrant.umich.edu

Michigan United Conservation Clubs:
mucc.org

Recreational Boat and Fishing Foundation:
takemefishing.org

Chippewa Ottawa Resource Authority:
1836cora.org

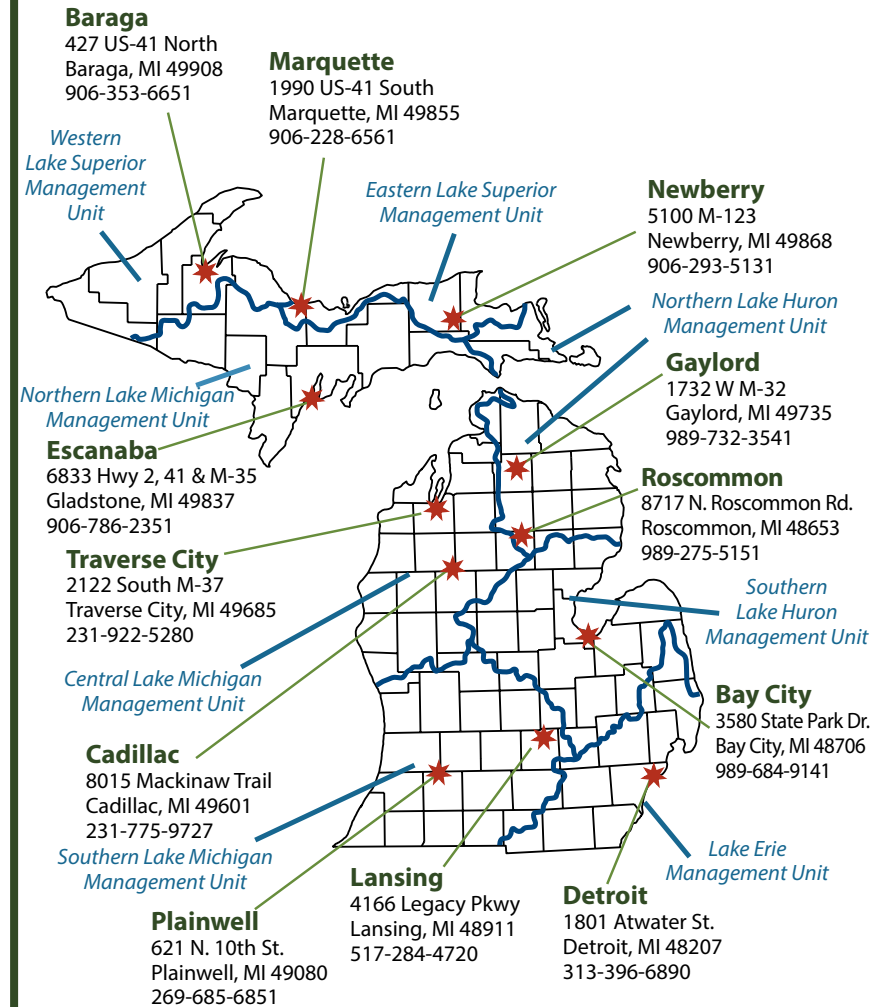
Great Lakes Indian Fish & Wildlife Commission:
glifwc.org

Michigan Department of Health & Human Services' Eat Safe Fish Information:
michigan.gov/eatsafefish

The **Customer Service Centers** shown below are open
Monday-Friday, 8 a.m. to 5 p.m.

RAP (Report All Poaching -- Call or Text): 800-292-7800

**Weekly Fishing Report: 855-777-0908 or online at
Michigan.gov/fishingreport**



Fisheries Division's organizational structure is based on Great Lakes Basins using watersheds as the fundamental ecological management unit. Check Michigan.gov/fishing for possible changes.

Discover, explore and enjoy Michigan's world-class fisheries.
Visit us online for all your angling needs:
where to go, when to go, and how to go!

MICHIGAN.GOV/FISHING



SHOP ON THE GO!

You can purchase your Michigan fishing license
24 hours a day at www.mdnr-elastic.com.

